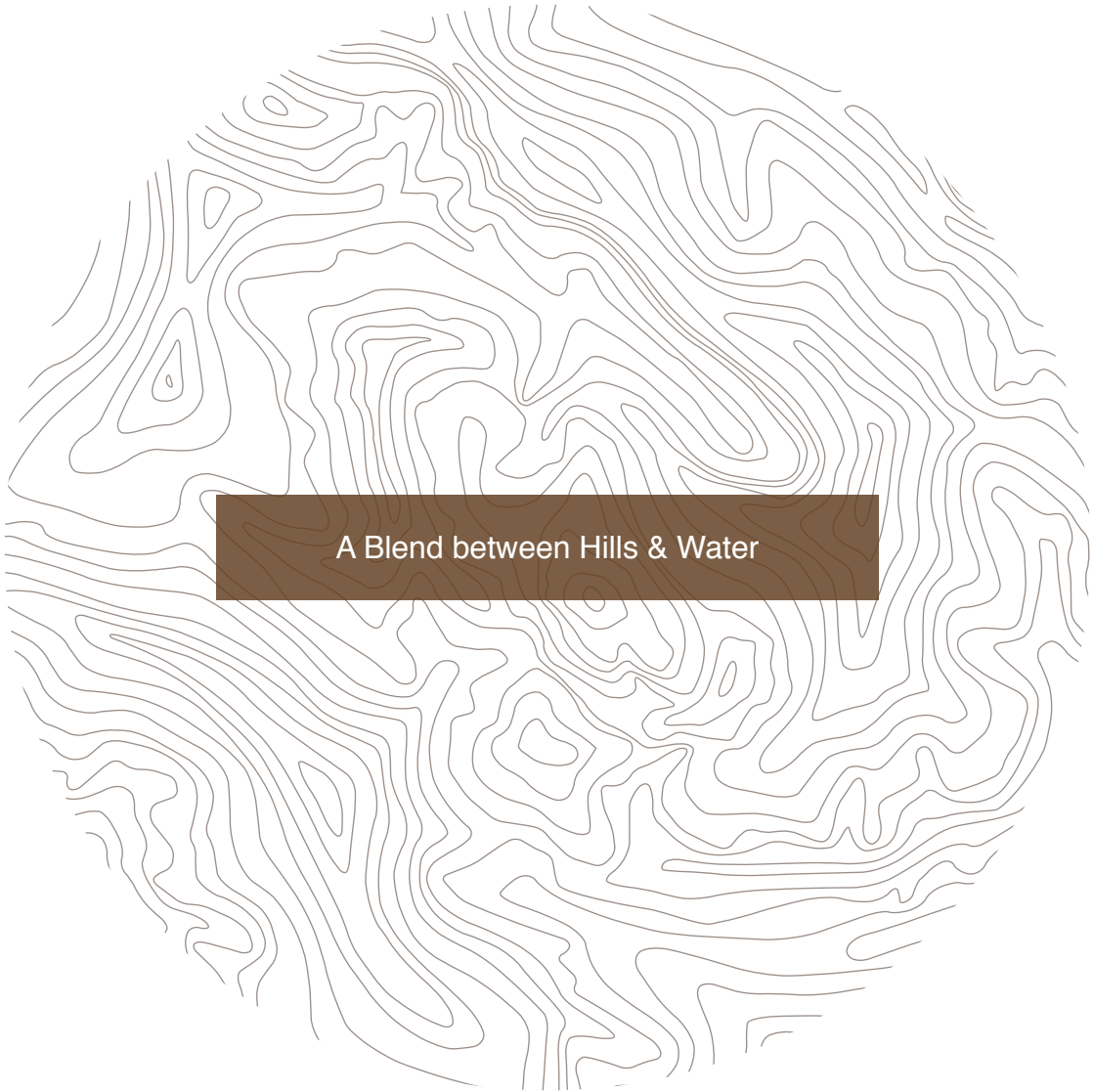


The background of the image is a topographic map with brown contour lines on a darker brown background. The lines represent elevation and are arranged in a complex, wavy pattern across the entire frame.

WADI JEBAL



A Blend between Hills & Water



SOMABAY

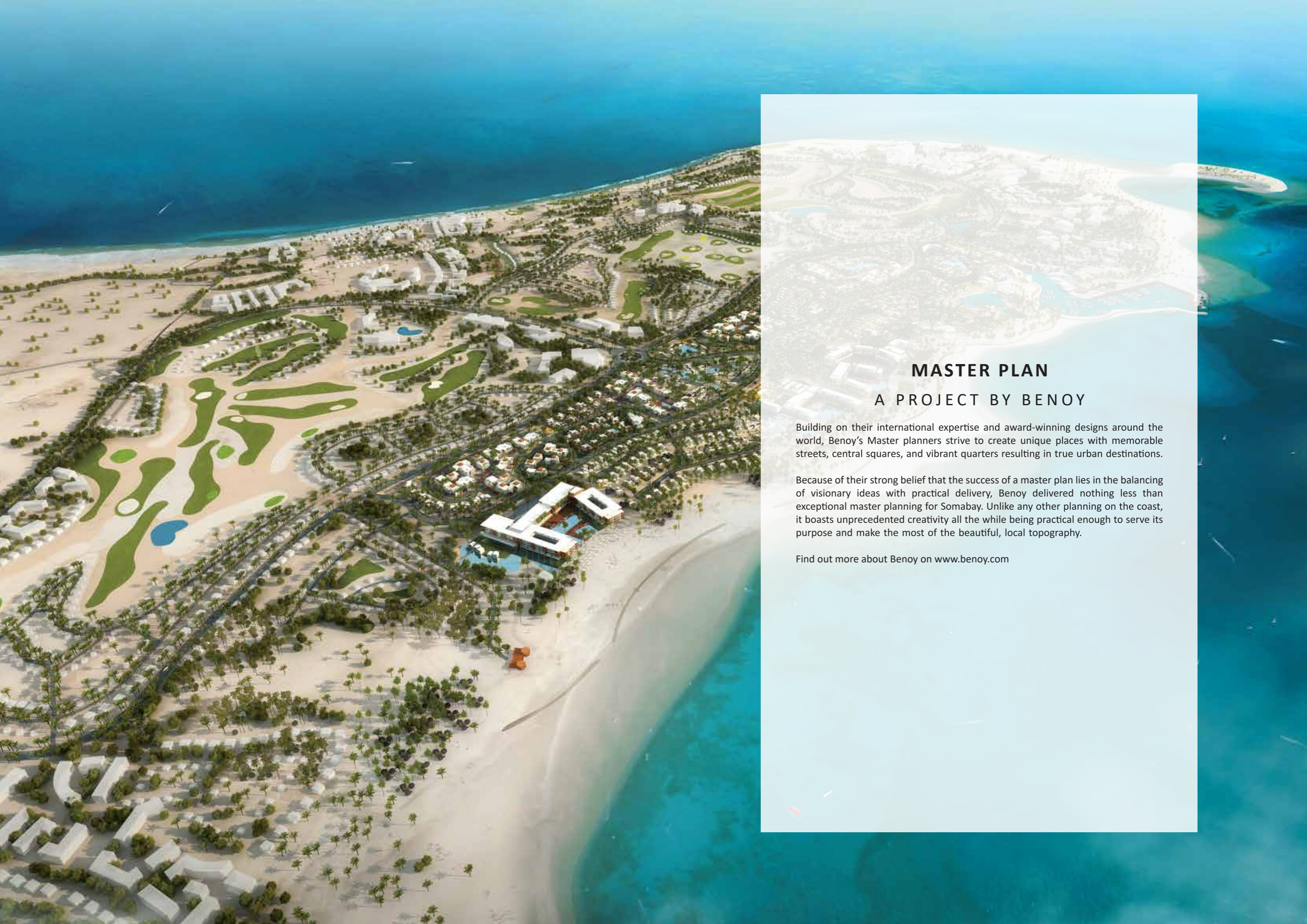
Somabay is a ten million square meter resort peninsula on Egypt's Red Sea Coast, designed to celebrate the best elements of the sun and sea. This self-contained resort paradise is encompassed by endless sandy beaches to the South and magical coral reefs to the North.

Somabay hosts a pure natural landscape accented by its diverse resort hotels, residential properties, golf course, thalasso spa, and water sports centers.

The peninsula is blessed with dry desert winds and low humidity. Winters are temperate with daytime temperatures averaging in the low to mid 20 C while summer averages in the low 30 C.

Somabay is just four hours away from Central Europe and a short drive from Hurghada International Airport. Furthermore, the ancient sites of Luxor and the Nile Valley are a convenient two hour drive away.





MASTER PLAN

A PROJECT BY BENOY

Building on their international expertise and award-winning designs around the world, Benoy's Master planners strive to create unique places with memorable streets, central squares, and vibrant quarters resulting in true urban destinations.

Because of their strong belief that the success of a master plan lies in the balancing of visionary ideas with practical delivery, Benoy delivered nothing less than exceptional master planning for Somabay. Unlike any other planning on the coast, it boasts unprecedented creativity all the while being practical enough to serve its purpose and make the most of the beautiful, local topography.

Find out more about Benoy on www.benoy.com

SOMABAY MARINA

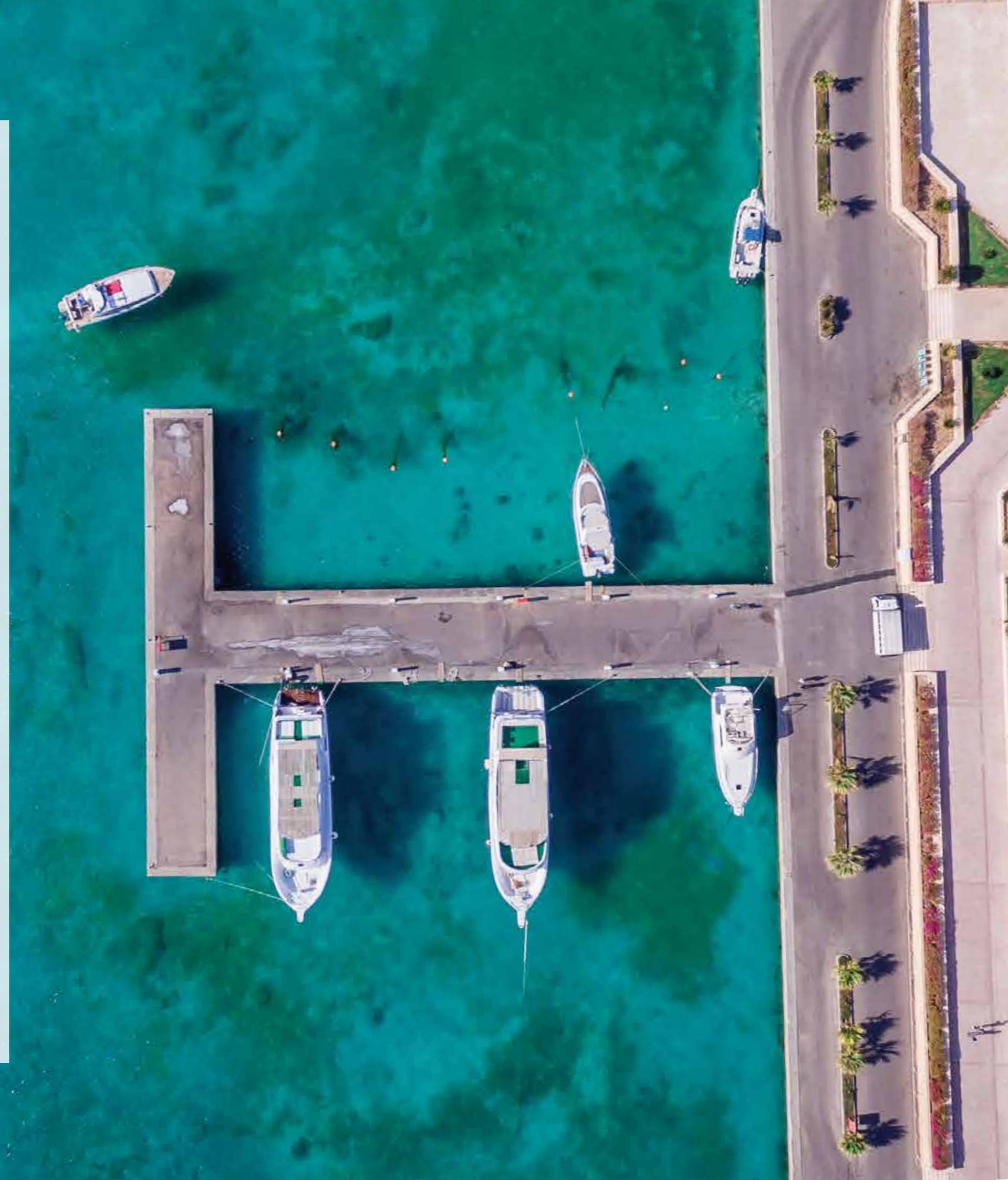
A WORLD-CLASS MARINA AS YOUR BACKDROP

Step into Somabay's world-class Marina and lose yourself in a diverse array of authentic experiences, perfected by a treasure-trove of locally grown brands.

Set to become the pulsating heart of the peninsula year-round, the Marina is an exclusive invitation to indulge in unique culinary adventures, soulful retail experiences and late-night entertainment. Sip on a cup of freshly ground Coffee at 30 North, as you enjoy a good read from the neighboring Diwan Bookstore.

Uncover a pandora's box of stylish boutiques and artisanal souvenir shops, crowned by the finest handcrafted home accessories displayed at Rax. Indulge in juicy burger buns served all day long at Burger & Shrimp, freshly prepared homemade Pizza served at Farina or sample tantalizing oriental dishes, perfected by Baladina.

Treat yourself to Mawlana's heavenly oriental sweets e while your kids enjoy refreshing ice-cream scoops at Andrews. For friends wishing to spend a memorable night out, Sobar is the place to dine under a blanket of stars, perfected by signature delights and a flowing panorama of the Red Sea.





INTRODUCING

WADI JEBAL

Set atop the beautiful cliffs of the peninsula, Wadi Jebal is Somabay's latest gem: a residential project with unmatched views of the Red Sea's crystal clear waters. Making the most of the natural topography, it rewards all its unit owners with incredible views of the sea, 365 sunsets a year.

Built on only 15 % of the cliff, it offers its homes ample surrounding open spaces and privacy, bringing all that matters most in one place: beautiful homes in a picturesque setting.





1F 2F 3F 4F 5F
1E 2E 3E 4E 5E
2G 1G 2H 1H 3G 3H
5C 4G 5H 4H
2I 1I 2J 1J 3I 3J
5I 4I 5J 4J
2K 1K 3K
5K 4K 1L 2L 2M 1M 2N 1N 3M 3N 1P 2P 1O 2O 3O 4O 5O
4L 5L 5M 4M 5N 4N 3P 4P 5P 4O 5O
1D 2D 3D 2C 1C 4D 5D
2A 1A 1B 2B 3A 3B 5C 4C
5A 4A 4B 5B
207 208 209 210
203 204 205 206
201 202
102 103 104 105 106 107 108 109 110
217 218
227 226
225 224
223 222 221
213 214 215 216
211 212
111 112
113 114 115 116 117 118 119
120 121 122 123 124 125
126 127 128 129

WADI JEBAL
MASTER PLAN



WADI JEBAL PATIO VILLAS

From its glass, modern architectural style to the comfort of having your very own three bedroom summer home all on one floor, this Patio Villa exceeds your summer home criteria. Complete sea view from all rooms across the house grants unprecedented views at a glance of an eye.



type - 7
**THREE
Bedroom**

Indoor BUA 135 m²
Terrace 25 m²
Courtyard 28 m²
Unit Gross Area 188.00 m²



DISCLAIMER Please note that area sizes are subject to minor changes during execution and that swimming pools and guard rooms are not included. All home interior finishes are upgraded packages.









WADI JEBAL FIRST ROW VILLAS

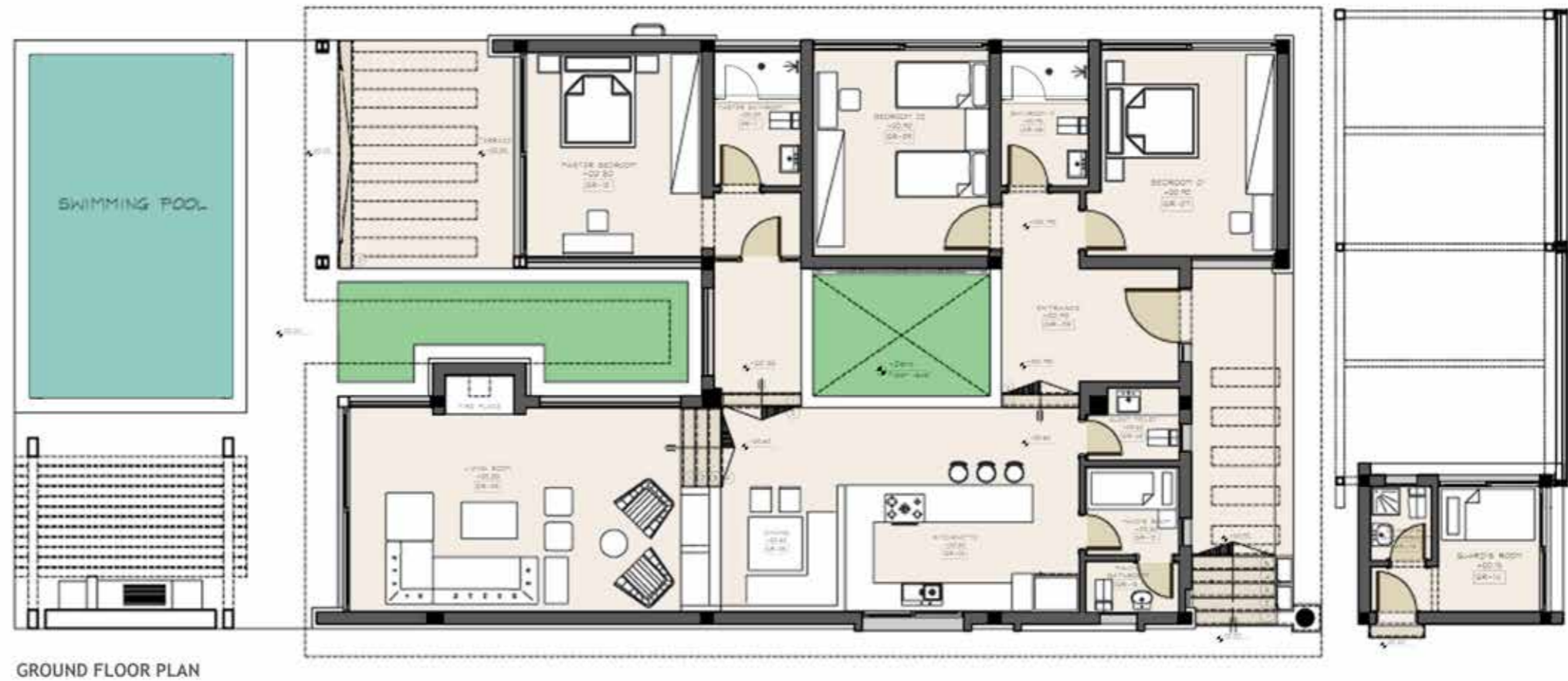
Enter your very own sanctuary in Wadi Jebal's one-of-a-kind contemporary villas and indulge in the luxury of waking up just a few meters away from the sea. Truly redefining exclusive comfort with your very own pool overlooking Sombay's crystal blue coastline. These first row villas feature three to four bedroom with pristine finishing standards equally as beautiful as your homes' surroundings setting a new standard for a summer home.





THREE Bedroom

Indoor BUA 207 m²
Terrace 42 m²
Courtyard 17 m²
Unit Gross Area 266.00 m²



DISCLAIMER Please note that area sizes are subject to minor changes during execution and that swimming pools and guard rooms are not included. All home interior finishes are upgraded packages.







16390

www.somabay.com