



# SOMA — COVES

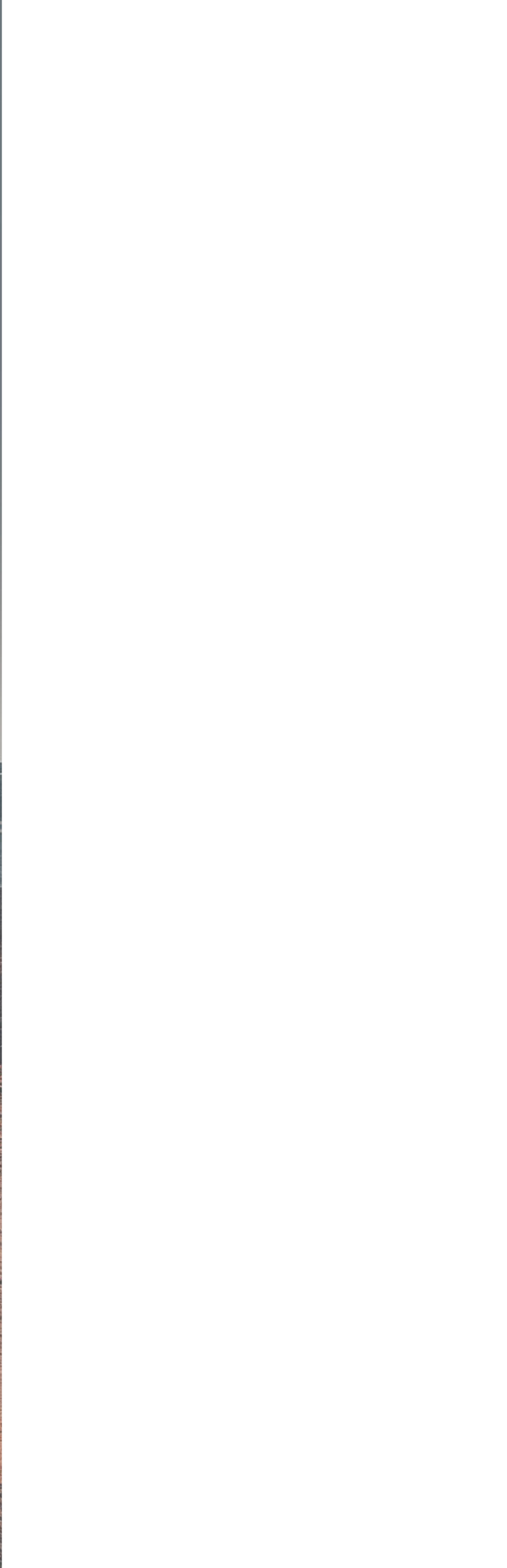
E-BROCHURE



SOMA



COVES



Mother nature was  
unbelievably generous with  
a sun-kissed peninsula  
floating on the Red Sea's  
gleaming coastline.

Here is where exquisite ribbons of sand are backed by lush green golf views and lapped by turquoise waters sleeping at the foot of red mountain peaks. Captivating beneath the water as above, Somabay is one of the few places on earth that does beach-front luxury so effortlessly.

SOMA'S  
MOST NATURAL





Nestled on 10 million square meters of lush land, life at Somabay is where fantasy-scapes follow you wherever you go and sundrenched activities take infinite elevating forms. Expertly conceived to evoke a laid-back European feel, every aspect of the heavenly development is sympathetic to nature, painting colorful experiences around its lively marina and soul-soothing jetty, so you can take recharge or decelerate. Home to 5 luxury resort hotels and a signature portfolio of residential properties, Somabay's one-of-a-kind settings with its full complement of premium amenities are the stage for incomparable experiences alongside friends and family.

A scenic view of a rocky coastline. The foreground is a rugged, reddish-brown rocky shore. The middle ground shows the dark blue ocean with white-capped waves breaking. The background is a vast, overcast sky with heavy, grey clouds. A large, solid green circle is overlaid in the center of the image, containing the text "A TIMELESS SANCTUARY OF NATURAL CHARM" in a black, serif font.

A TIMELESS SANCTUARY  
OF NATURAL CHARM

# MASTERPLAN



From a far, Soma Coves looks like an earthy canvas where natural details are amplified. Looking close, the project's elemental beauty lies in its prime location overlooking the reef, promising uninterrupted sea views, as well as picturesque frames, wherever you turn. Imaginatively designed in absolute harmony with its natural surroundings, Soma Coves is living deep in nature while decelerating in a cove-inspired lifestyle where raw beauty simply reigns.

Soma Coves is simply majestic nature, running wild. It's waking up to a breathtaking sunrise and immersing yourself in waves of serenity, as well as infinite views of deep blue, year-round.

# MASTERPLAN Elevations





SOMA — COVES

STAND ALONE VILLA



# STAND ALONE ——— VILLA

EXTERIOR



INTERIOR  
(RECEPTION)



# STAND ALONE ——— VILLA

## EXTERIOR

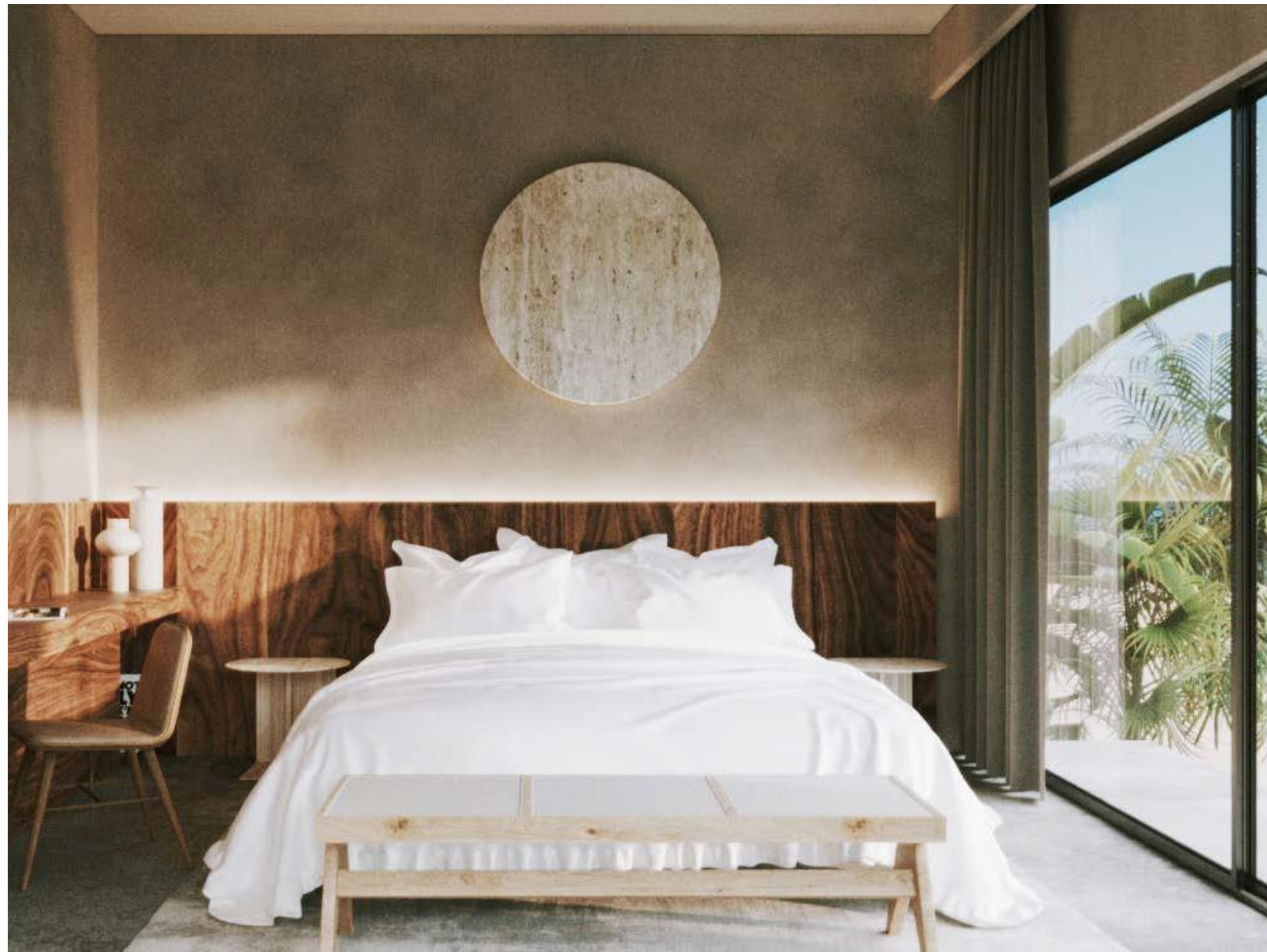


## INTERIOR (DINNING AREA)

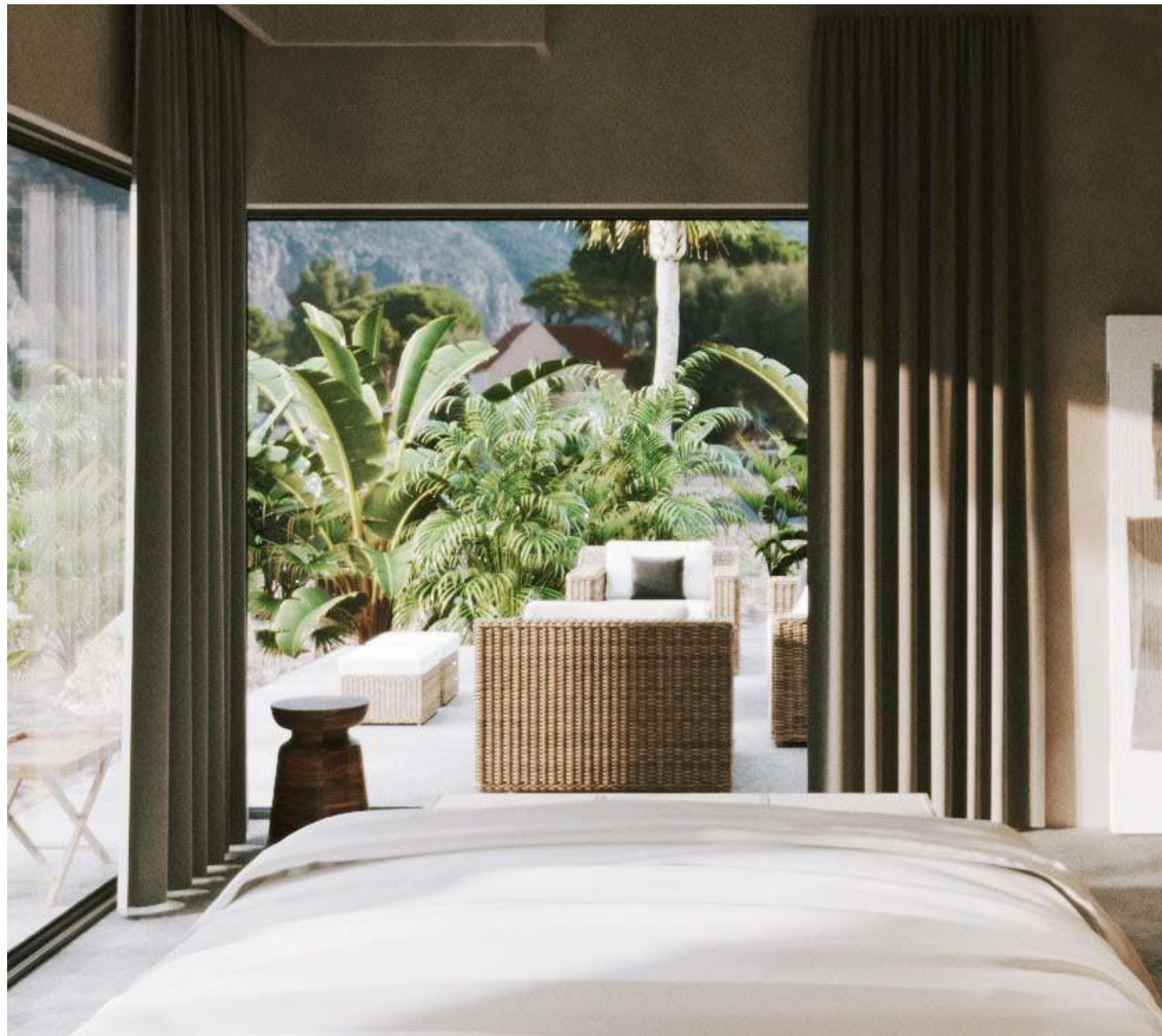


# STAND ALONE ——— VILLA

(BEDROOM)



INTERIOR  
(BEDROOM)

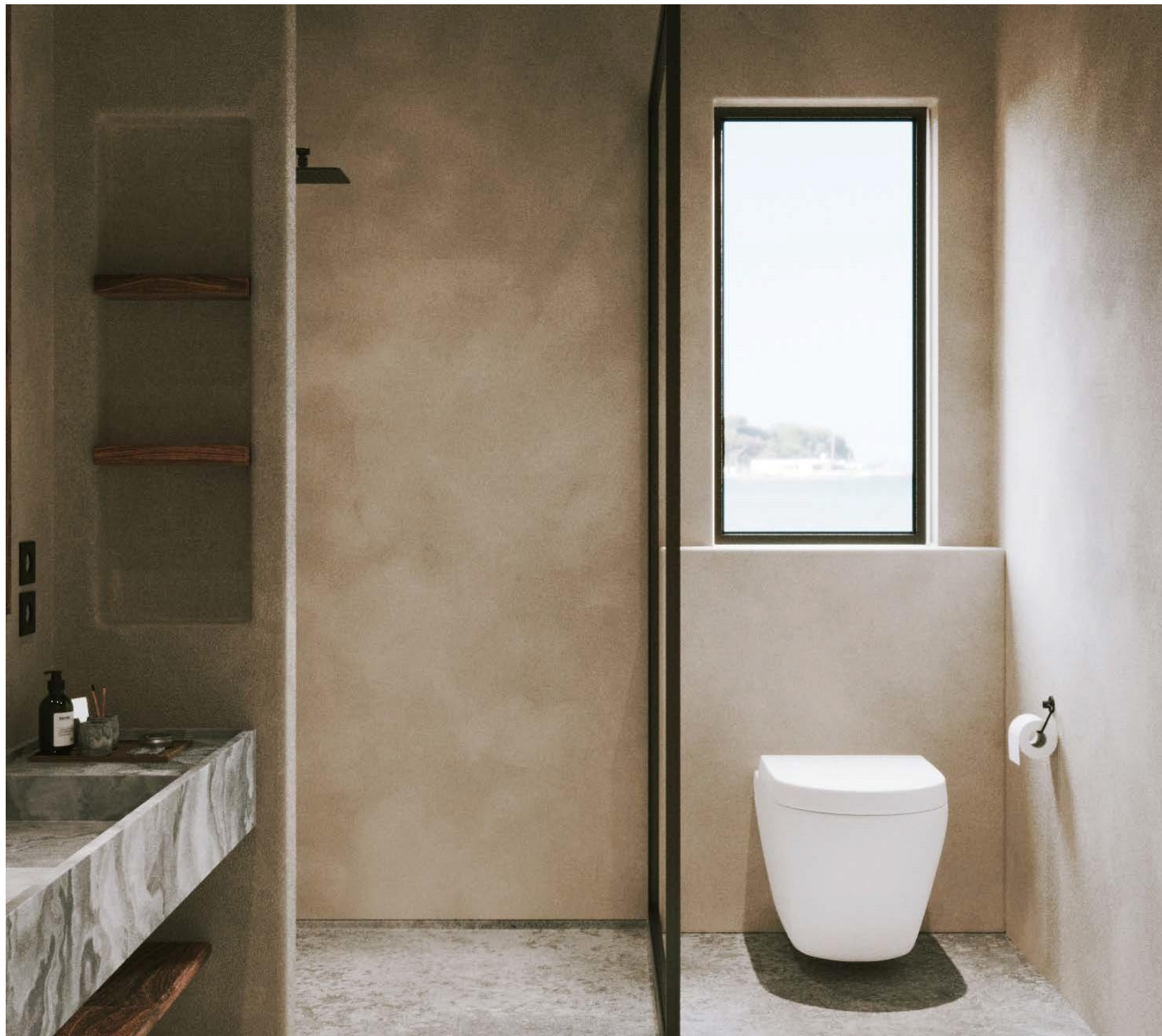


# STAND ALONE ——— VILLA

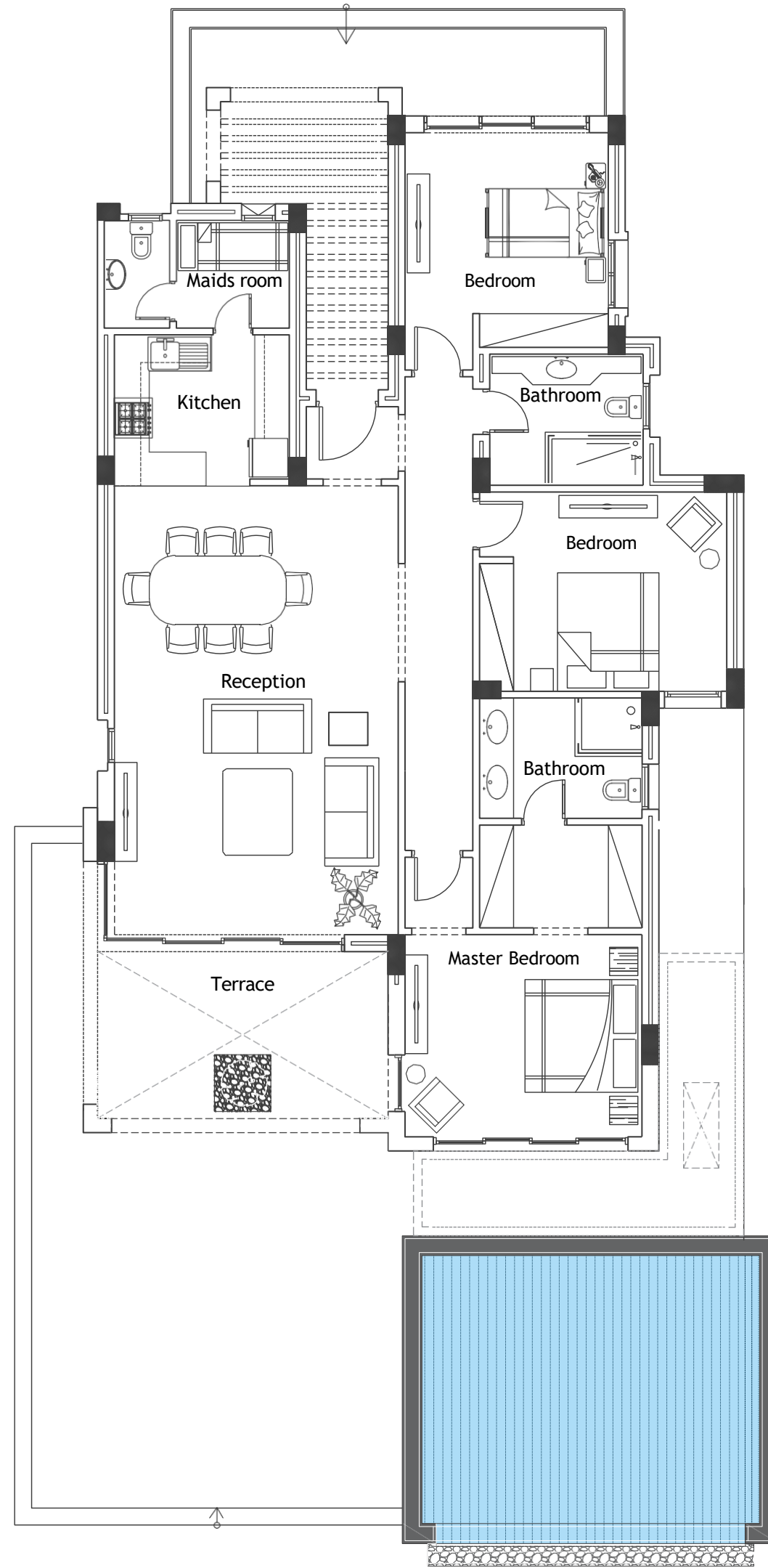
(BATHROOM)



INTERIOR  
(BATHROOM)



# STAND ALONE ——— VILLA



Unit Area  
155.8 m<sup>2</sup>

Terrace  
28.8 m<sup>2</sup>

Gross Area  
184.6 m<sup>2</sup>

Living Room  
5.0 × 4.5 m

Dinning Room  
5.0 × 3.5 m

Kitchen  
2.65 × 3.1 m

Lobby  
8.4 × 1.2 m

Master Bedroom  
5.5 × 4.2 m

Master bathroom  
2.9 × 2.1 m

Bedroom 1  
4.4 × 3.5 m<sup>2</sup>

Bedroom 2  
3.8 × 3.6 m<sup>2</sup>

Bathroom  
2.7 × 2.3 m<sup>2</sup>

Maid's room  
2.0 × 1.9 m

Maid's toilet  
1.9 × 1.15 m

Terrace  
5.4 × 3.2 m

DISCLAIMER 1. Drawings are not to scale. 2. The architectural details, dimensions and area in this plan are based on Schematic Design information only, and final As-Built conditions may vary. 3. All units are sold as unfurnished apartments, without furniture and furnishings, without white goods provisions, etc. 4. All images used are for illustrative purposes only and do not represent the actual size, features, specifications, fittings, and furnishings. 5. Somabay reserves the right to make revisions/alterations, at its absolute discretion, and without liability.



CHALET

# COVES ————— CHALET

## EXTERIOR



## INTERIOR (RECEPTION)



# COVES ————— CHALET

(RECEPTION)



INTERIOR  
(DINNING AREA)





# COVES ————— CHALET

(BEDROOM)



INTERIOR  
(BEDROOM)



# COVES ————— CHALET

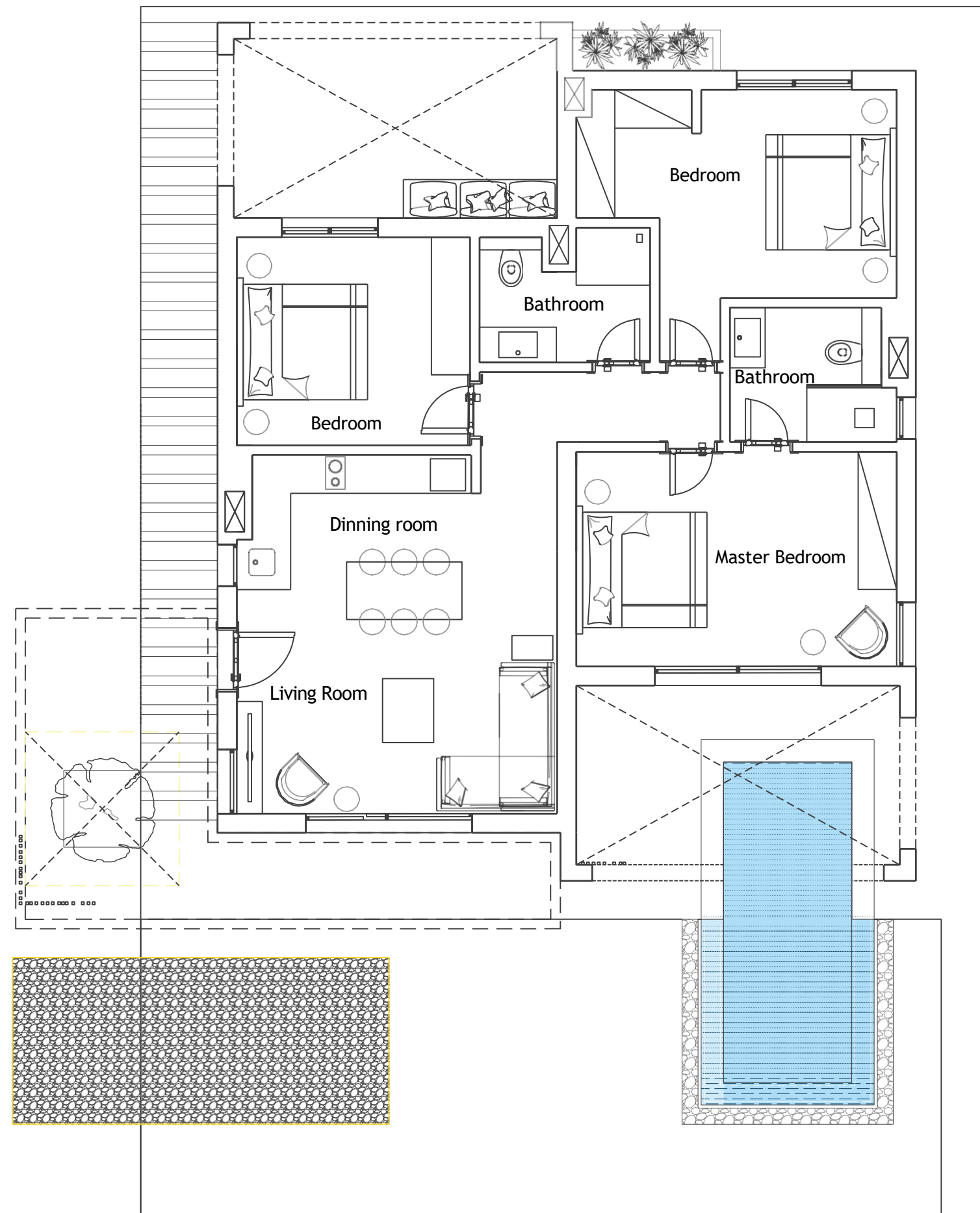
(BATHROOM)



INTERIOR  
(BATHROOM)



# COVES ————— CHALET



Unit Area  
107.7 m<sup>2</sup>

Terrace  
16.15 m<sup>2</sup>

Gross Area  
123.85 m<sup>2</sup>

Living Area  
5.0 × 3.0 m

Dinning Area  
5.0 × 2.6 m

Lobby  
3.7 × 1.1 m

Master Bedroom  
5.0 × 3.35 m

Master Bathroom  
2.6 × 2.1 m

Bedroom 1  
5.0 × 4.25 m

Bedroom 2  
3.65 × 3.25 m

Bathroom  
2.67 × 2.1 m

Terrace  
5.3 × 3.05 m

DISCLAIMER 1. Drawings are not to scale. 2. The architectural details, dimensions and area in this plan are based on Schematic Design information only, and final As-Built conditions may vary. 3. All units are sold as unfurnished apartments, without furniture and furnishings, without white goods provisions, etc. 4. All images used are for illustrative purposes only and do not represent the actual size, features, specifications, fittings, and furnishings. 5. Somabay reserves the right to make revisions/alterations, at its absolute discretion, and without liability.



APARTMENT  
(B-1 / B-2)

# COVES ————— APARTMENT

EXTERIOR



# COVES ————— APARTMENT

## EXTERIOR



## INTERIOR (DINNING AREA)



# COVES ————— APARTMENT

## EXTERIORS



# COVES ————— APARTMENT

## EXTERIOR



## INTERIOR (RECEPTION)



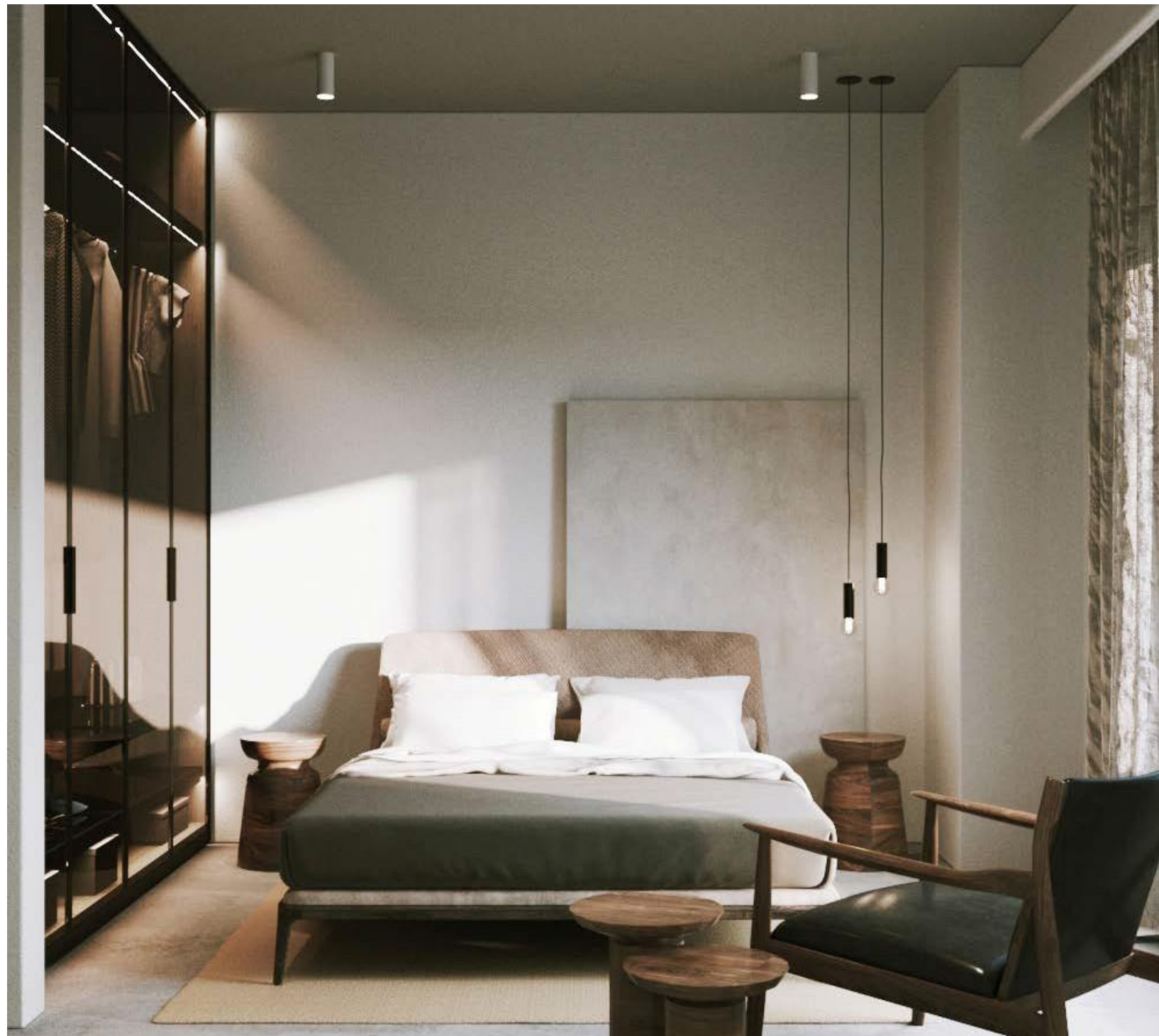


# COVES ————— APARTMENT

(BEDROOM)



INTERIOR  
(BEDROOM)



# COVES ————— APARTMENT

(BEDROOM)



INTERIOR  
(BATHROOM)



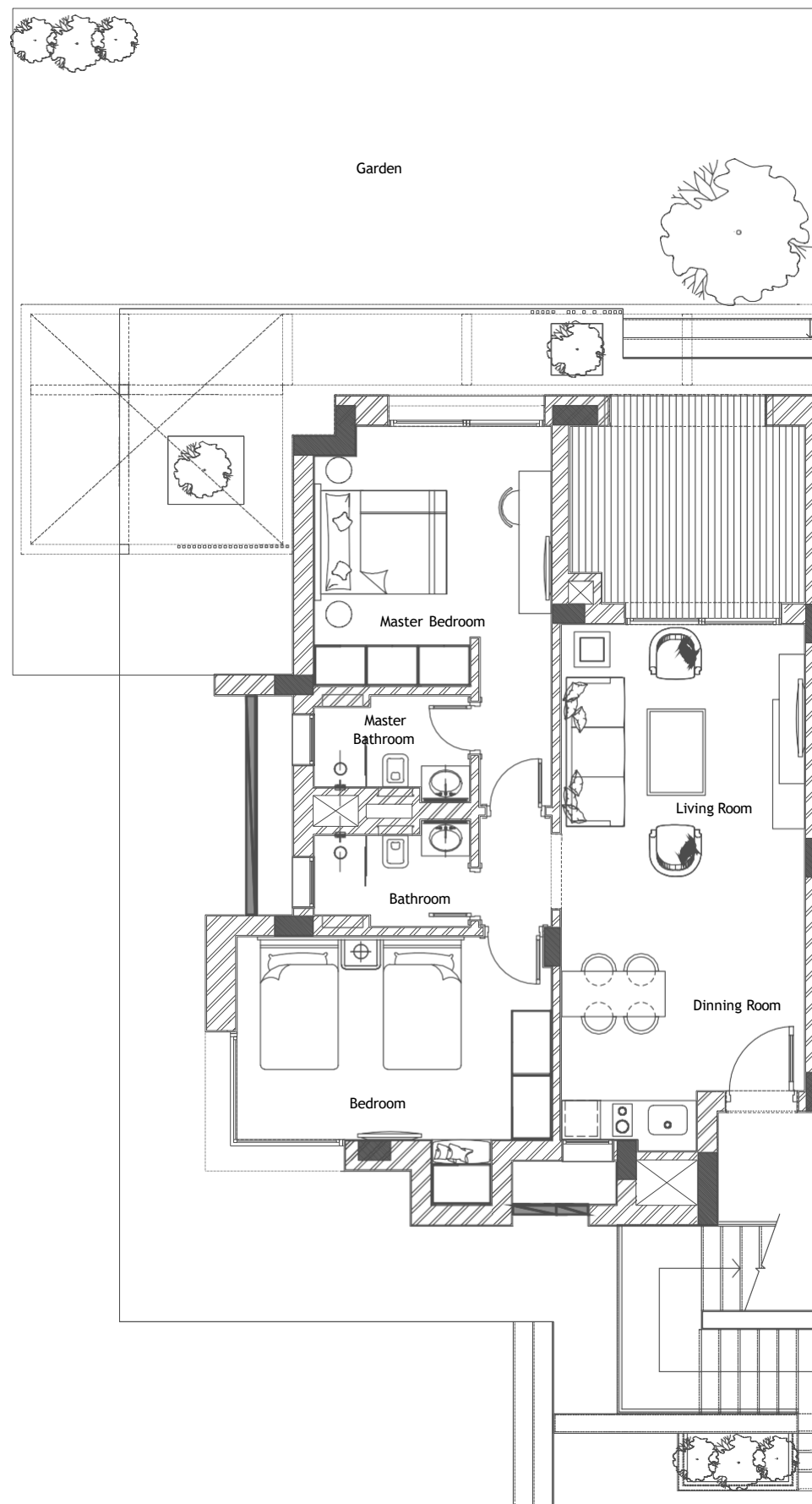


APARTMENT  
(B-1)

# COVES ——— B - 1 ——— APARTMENT

## TYPE 1 WITH GARDEN

This Unit is Located on the Ground Floor



Unit Area  
91.7 m<sup>2</sup>

Terrace  
11 m<sup>2</sup>

Gross Area  
113.9 m<sup>2</sup>

Living Area  
4.4 × 3.8 m

Dinning Area  
3.8 × 3.6 m

Master Bedroom  
5.9 × 3.7 m

Master Bathroom  
2.4 × 1.7 m

Bedroom  
4.88 × 4.15 m

Lobby  
1.7 × 1.15 m

Bathroom  
2.4 × 1.7 m

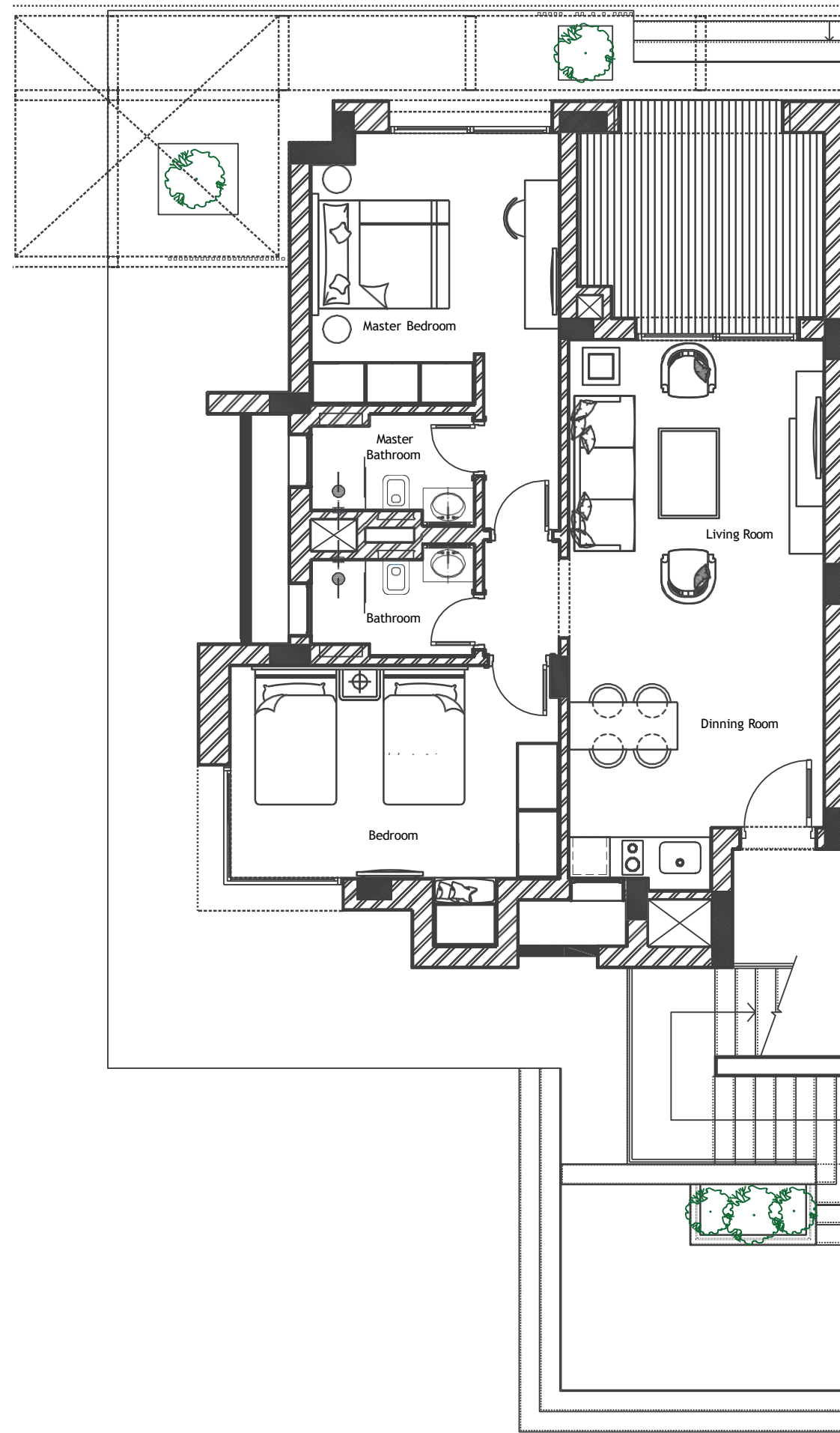
Terrace  
3.7 × 2.7 m

DISCLAIMER 1. Drawings are not to scale. 2. The architectural details, dimensions and area in this plan are based on Schematic Design information only, and final As-Built conditions may vary. 3. All units are sold as unfurnished apartments, without furniture and furnishings, without white goods provisions, etc. 4. All images used are for illustrative purposes only and do not represent the actual size, features, specifications, fittings, and furnishings. 5. Somabay reserves the right to make revisions/alterations, at its absolute discretion, and without liability.

# COVES B - 1 APARTMENT

TYPE 1

This Unit is Located on the First and Second floor



Unit Area  
91.7 m<sup>2</sup>

Terrace  
11 m<sup>2</sup>

Gross Area  
113.9 m<sup>2</sup>

Living Area  
4.4 × 3.8 m

Dinning Area  
3.8 × 3.6 m

Master Bedroom  
5.9 × 3.7 m

Master Bathroom  
2.4 × 1.7 m

Bedroom  
4.88 × 4.15 m

Lobby  
1.7 × 1.15 m

Bathroom  
2.4 × 1.7 m

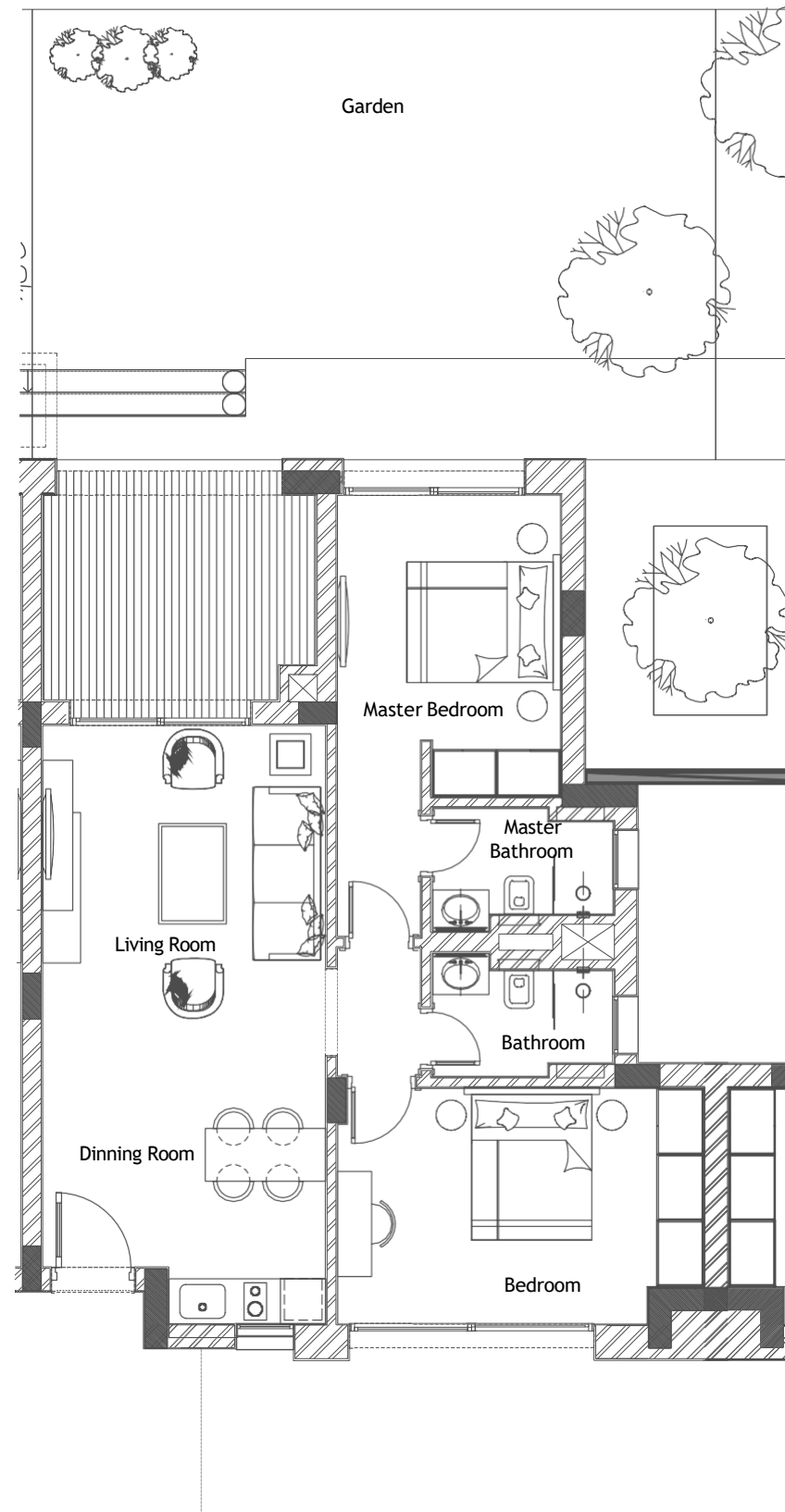
Terrace  
3.7 × 2.7 m

DISCLAIMER 1. Drawings are not to scale. 2. The architectural details, dimensions and area in this plan are based on Schematic Design information only, and final As-Built conditions may vary. 3. All units are sold as unfurnished apartments, without furniture and furnishings, without white goods provisions, etc. 4. All images used are for illustrative purposes only and do not represent the actual size, features, specifications, fittings, and furnishings. 5. Somabay reserves the right to make revisions/alterations, at its absolute discretion, and without liability.

# COVES ——— B - 1 ——— APARTMENT

## TYPE 2 WITH GARDEN

This Unit is Located on the Ground Floor



Unit Area  
84.9 m<sup>2</sup>

Terrace  
11 m<sup>2</sup>

Gross Area  
107.1 m<sup>2</sup>

Living Area  
4.4 × 3.8 m

Dinning Area  
3.8 × 3.6 m

Master Bedroom  
5.9 × 3.0 m

Master Bathroom  
2.4 × 1.7 m

Bedroom  
4.88 × 4.15 m

Lobby  
1.7 × 1.15 m

Bathroom  
2.4 × 1.7 m

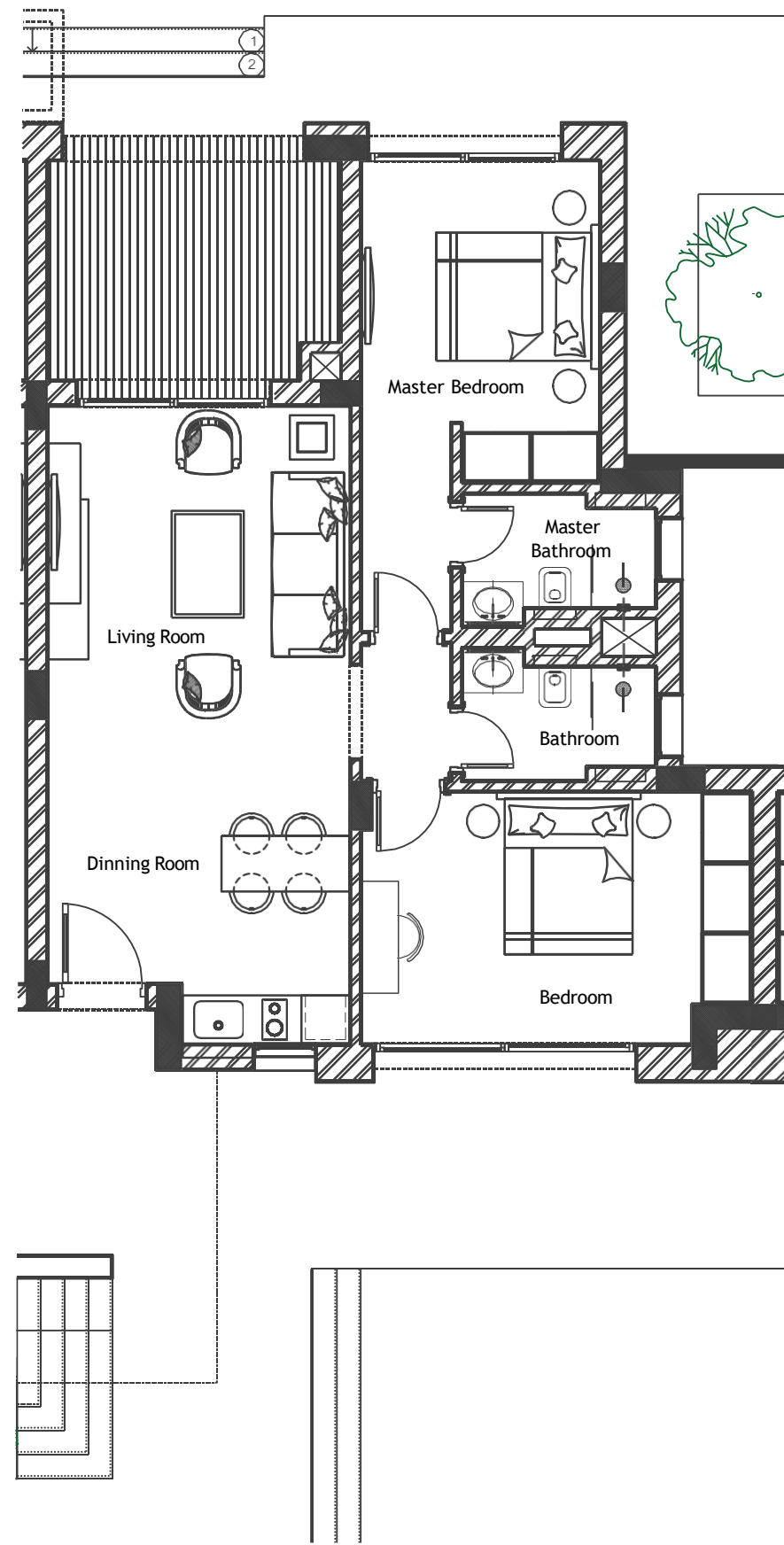
Terrace  
3.7 × 2.7 m

DISCLAIMER 1. Drawings are not to scale. 2. The architectural details, dimensions and area in this plan are based on Schematic Design information only, and final As-Built conditions may vary. 3. All units are sold as unfurnished apartments, without furniture and furnishings, without white goods provisions, etc. 4. All images used are for illustrative purposes only and do not represent the actual size, features, specifications, fittings, and furnishings. 5. Somabay reserves the right to make revisions/alterations, at its absolute discretion, and without liability.

# COVES B - 1 APARTMENT

TYPE 2

This Unit is Located on the First and Second Floor



Unit Area  
84.9 m<sup>2</sup>

Terrace  
11 m<sup>2</sup>

Gross Area  
107.1 m<sup>2</sup>

Living Area  
4.4 × 3.8 m

Dinning Area  
3.8 × 3.6 m

Master Bedroom  
5.9 × 3.0 m

Master Bathroom  
2.4 × 1.7 m

Bedroom  
4.88 × 4.15 m

Lobby  
1.7 × 1.15 m

Bathroom  
2.4 × 1.7 m

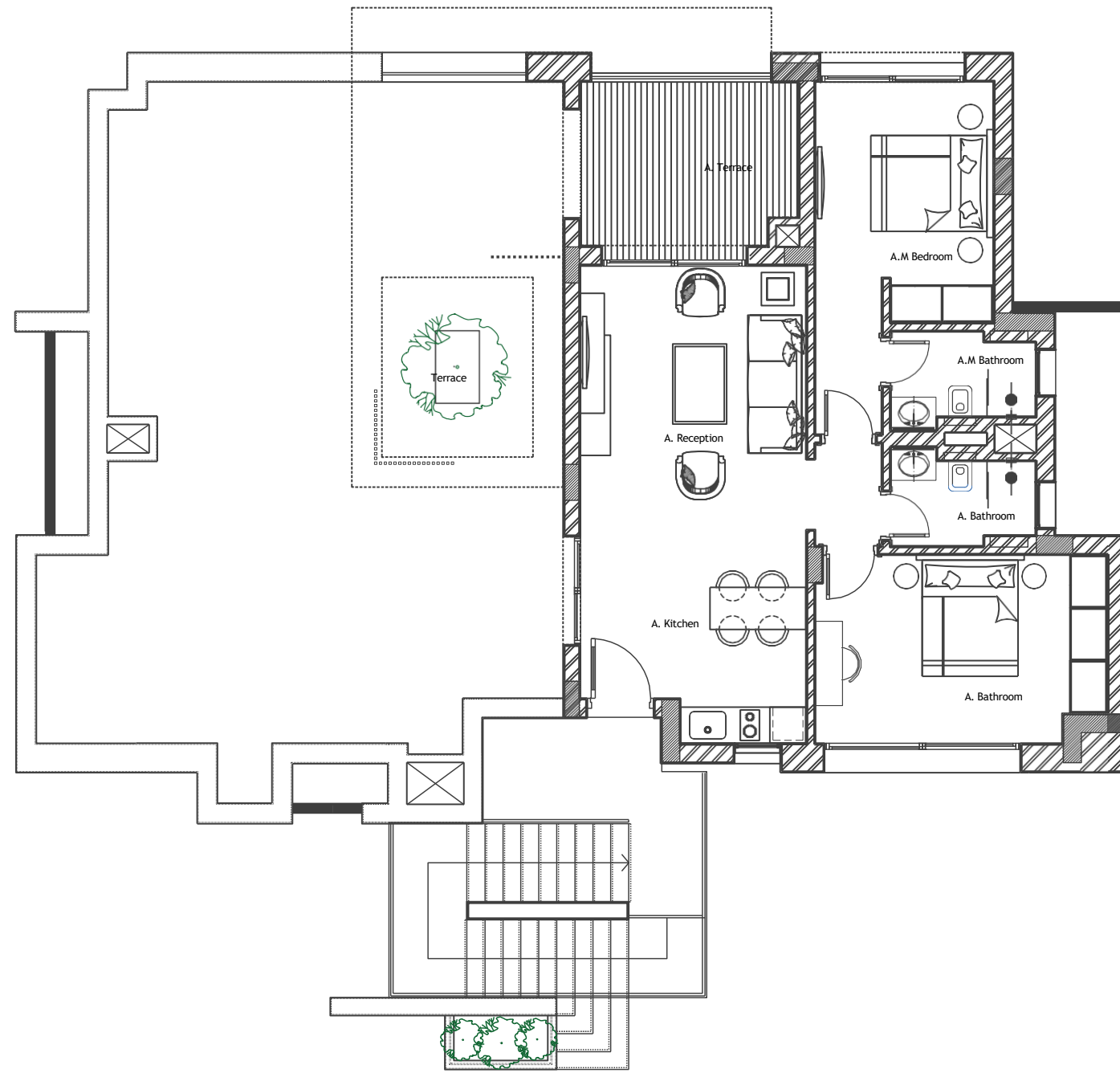
Terrace  
3.7 × 2.7 m

DISCLAIMER 1. Drawings are not to scale. 2. The architectural details, dimensions and area in this plan are based on Schematic Design information only, and final As-Built conditions may vary. 3. All units are sold as unfurnished apartments, without furniture and furnishings, without white goods provisions, etc. 4. All images used are for illustrative purposes only and do not represent the actual size, features, specifications, fittings, and furnishings. 5. Somabay reserves the right to make revisions/alterations, at its absolute discretion, and without liability.

# COVES B - 1 APARTMENT

TYPE 3

This Unit is Located on the Second Floor



Unit Area  
84.9 m<sup>2</sup>

Terrace  
24.2 m<sup>2</sup>

Open Terrace  
89.7 m<sup>2</sup>

Gross Area  
119.7 m<sup>2</sup>

Living Area  
4.4 × 3.8 m

Dinning Area  
3.8 × 3.6 m

Master Bedroom  
5.9 × 3.0 m

Master Bathroom  
2.4 × 1.7 m

Bedroom  
4.88 × 3.15 m

Lobby  
1.7 × 1.15 m

Bathroom  
2.4 × 1.7 m

Terrace  
3.7 × 2.7 m

DISCLAIMER 1. Drawings are not to scale. 2. The architectural details, dimensions and area in this plan are based on Schematic Design information only, and final As-Built conditions may vary. 3. All units are sold as unfurnished apartments, without furniture and furnishings, without white goods provisions, etc. 4. All images used are for illustrative purposes only and do not represent the actual size, features, specifications, fittings, and furnishings. 5. Somabay reserves the right to make revisions/alterations, at its absolute discretion, and without liability.



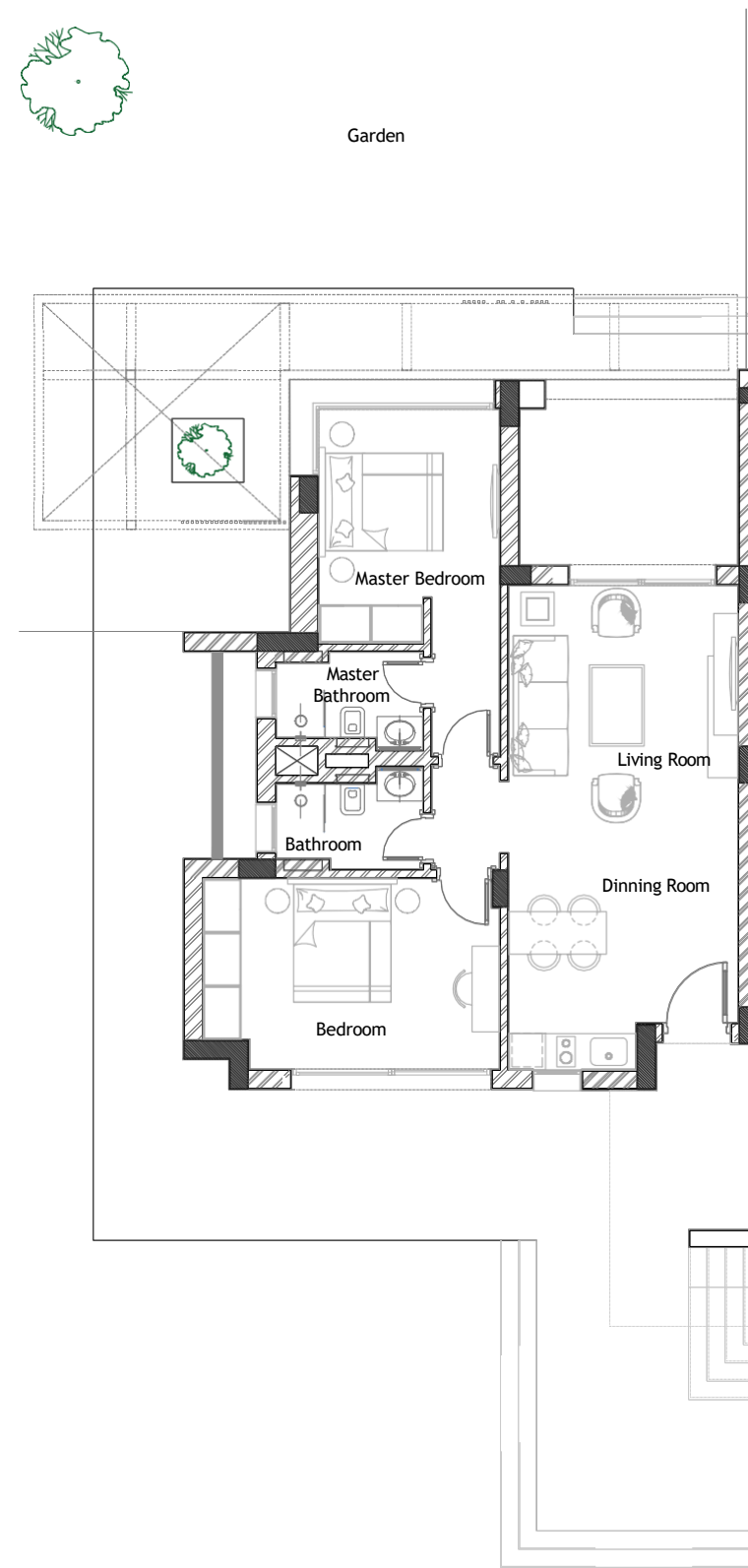


APARTMENT  
(B-2)

# COVES ——— B - 2 ——— APARTMENT

## TYPE 1 WITH GARDEN

This Unit is Located on the Ground Floor



Unit Area  
84.9 m<sup>2</sup>

Terrace  
11 m<sup>2</sup>

Gross Area  
109.35 m<sup>2</sup>

Living Area  
4.4 × 3.8 m

Dinning Area  
3.8 × 3.6 m

Master Bedroom  
5.75 × 3.0 m

Master Bathroom  
2.4 × 1.7 m

Bedroom  
4.88 × 3.15 m

Lobby  
1.7 × 1.15 m

Bathroom  
2.4 × 1.7 m

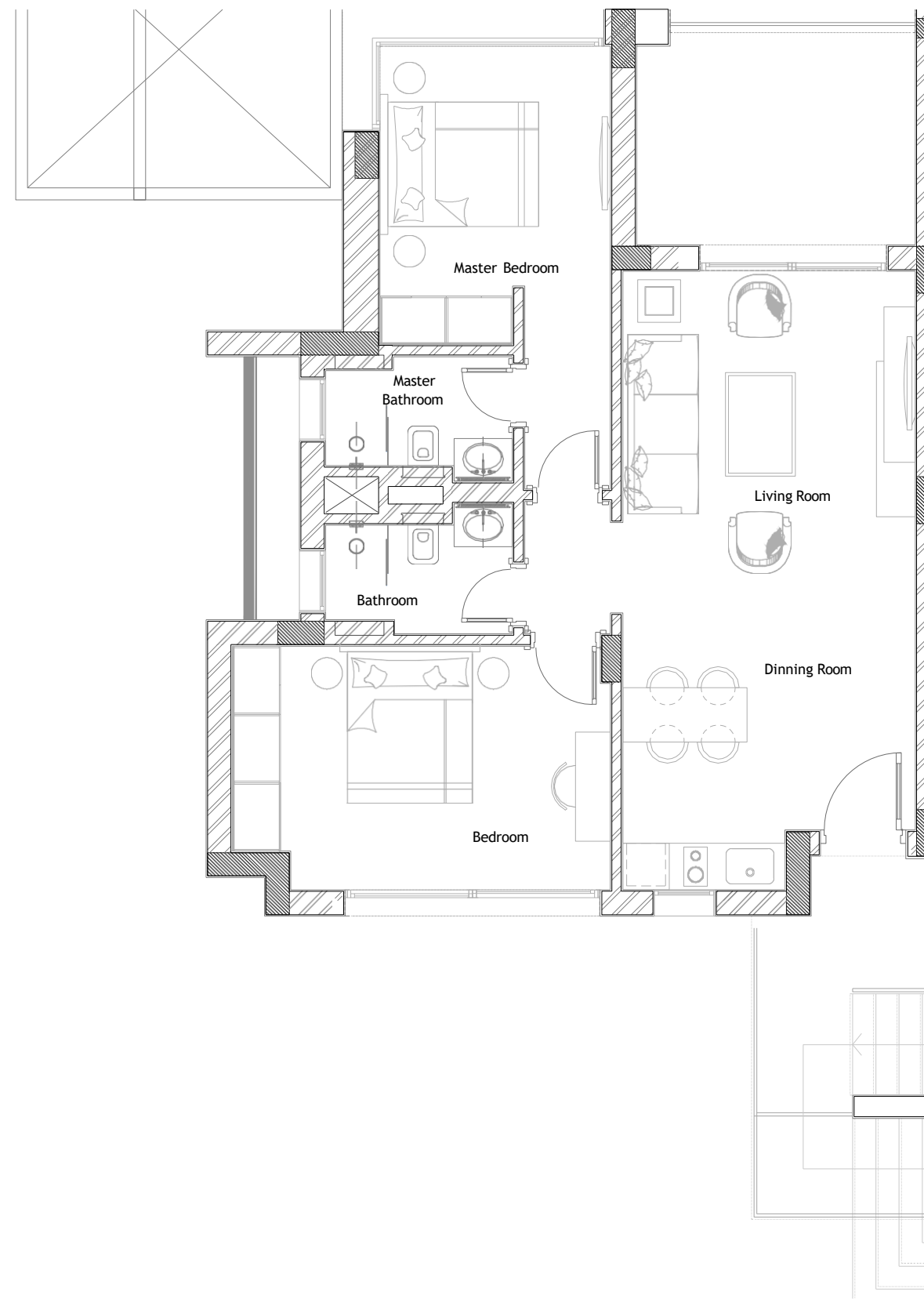
Terrace  
3.7 × 2.7 m

DISCLAIMER 1.Drawings are not to scale. 2.The architectural details, dimensions and area in this plan are based on Schematic Design information only, and final As-Built conditions may vary. 3.All units are sold as unfurnished apartments, without furniture and furnishings, without white goods provisions, etc. 4.All images used are for illustrative purposes only and do not represent the actual size, features, specifications, fittings, and furnishings. 5.Somabay reserves the right to make revisions/alterations, at its absolute discretion, and without liability.

# COVES B - 2 APARTMENT

TYPE 1

This Unit is Located on the First and Second floor



Unit Area  
84.9 m<sup>2</sup>

Terrace  
11 m<sup>2</sup>

Gross Area  
109.35 m<sup>2</sup>

Living Area  
4.4 × 3.8 m

Dinning Area  
3.8 × 3.6 m

Master Bedroom  
5.75 × 3.0 m

Master Bathroom  
2.4 × 1.7 m

Bedroom  
4.88 × 3.15 m

Lobby  
1.7 × 1.15 m

Bathroom  
2.4 × 1.7 m

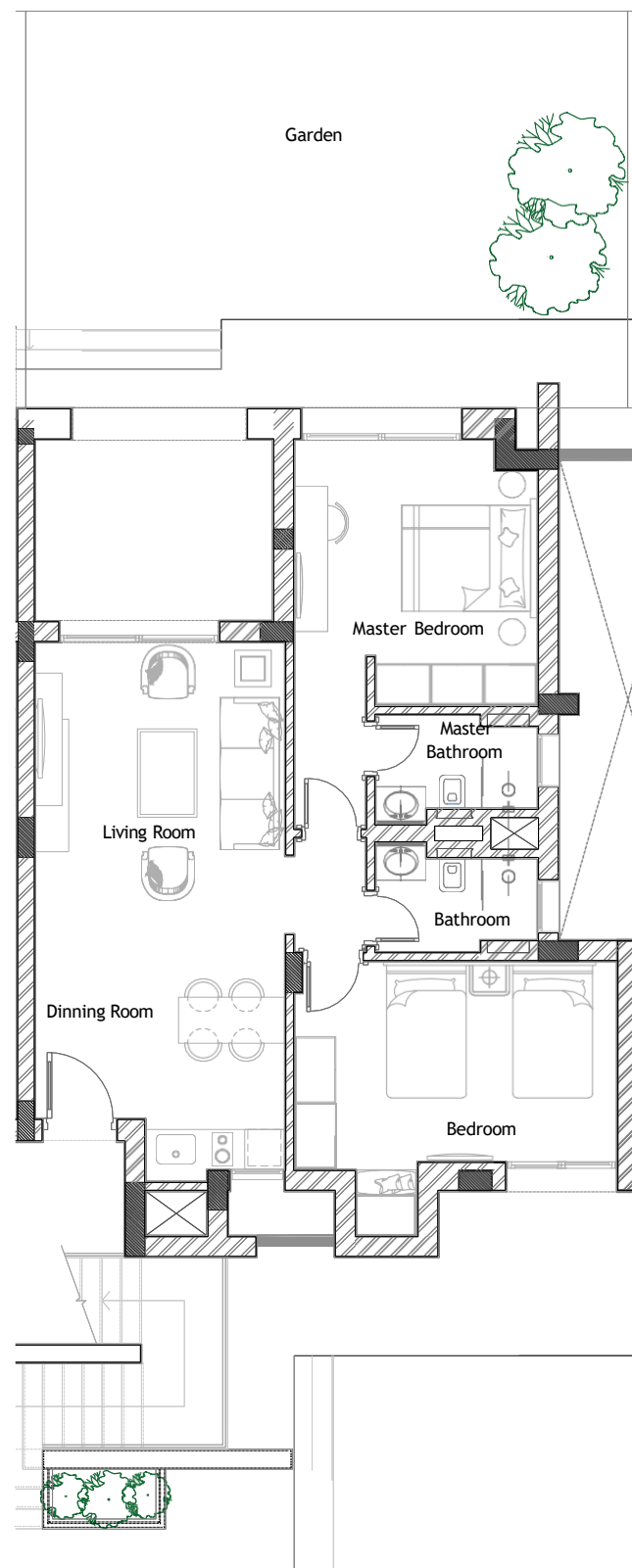
Terrace  
3.7 × 2.7 m

DISCLAIMER 1. Drawings are not to scale. 2. The architectural details, dimensions and area in this plan are based on Schematic Design information only, and final As-Built conditions may vary. 3. All units are sold as unfurnished apartments, without furniture and furnishings, without white goods provisions, etc. 4. All images used are for illustrative purposes only and do not represent the actual size, features, specifications, fittings, and furnishings. 5. Somabay reserves the right to make revisions/alterations, at its absolute discretion, and without liability.

# COVES ——— B - 2 ——— APARTMENT

## TYPE 2 WITH GARDEN

This Unit is Located on the Ground Floor



Unit Area  
91.7 m<sup>2</sup>

Terrace  
11 m<sup>2</sup>

Gross Area  
116.15 m<sup>2</sup>

Living Area  
4.4 × 3.8 m

Dinning Area  
3.8 × 3.6 m

Master Bedroom  
5.89 × 3.7 m

Master Bathroom  
2.4 × 1.7 m

Bedroom  
4.88 × 4.15 m

Lobby  
1.7 × 1.15 m

Bathroom  
2.4 × 1.7 m

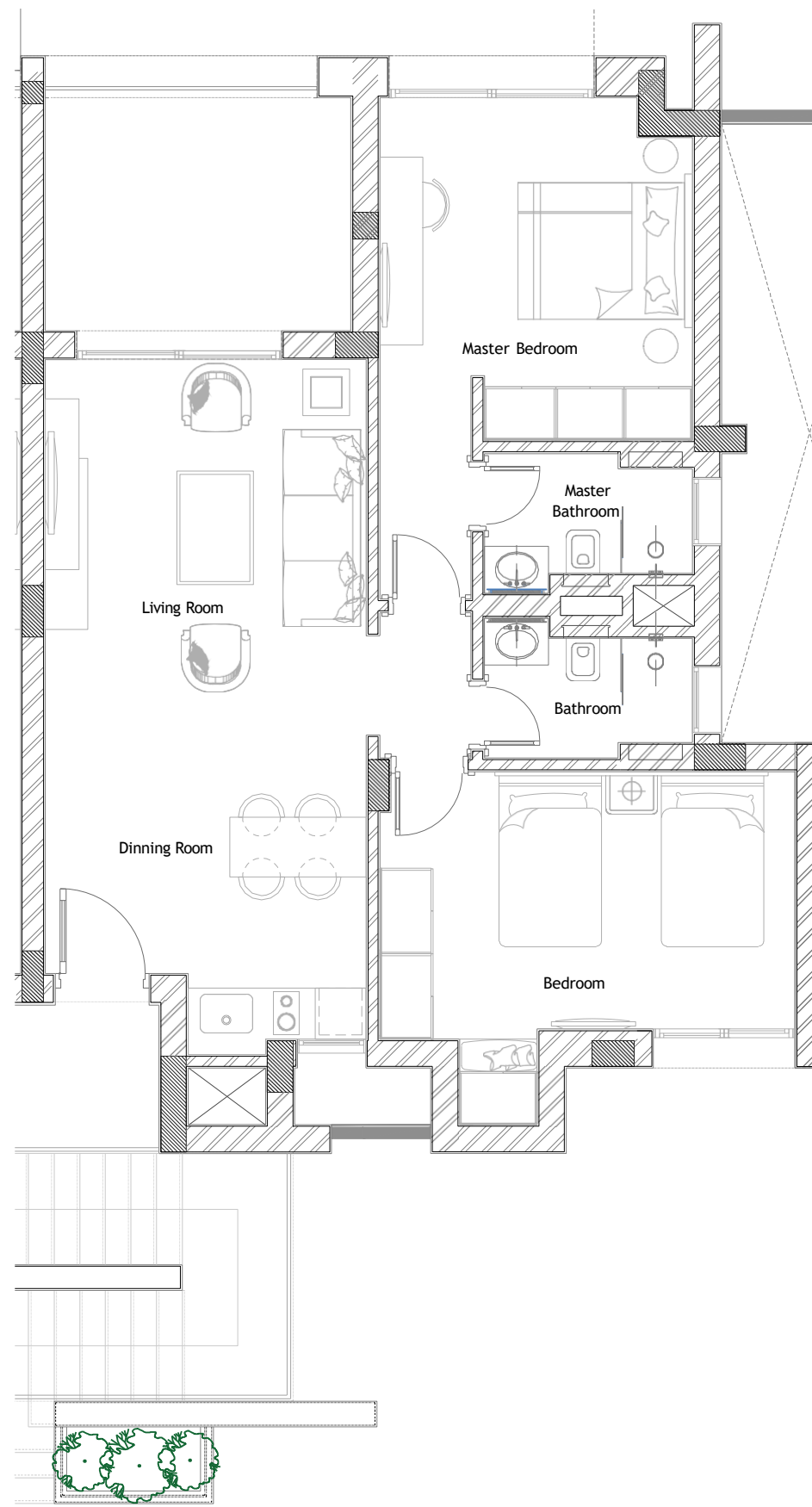
Terrace  
3.7 × 2.7 m

DISCLAIMER 1. Drawings are not to scale. 2. The architectural details, dimensions and area in this plan are based on Schematic Design information only, and final As-Built conditions may vary. 3. All units are sold as unfurnished apartments, without furniture and furnishings, without white goods provisions, etc. 4. All images used are for illustrative purposes only and do not represent the actual size, features, specifications, fittings, and furnishings. 5. Somabay reserves the right to make revisions/alterations, at its absolute discretion, and without liability.

# COVES B - 2 APARTMENT

TYPE 2

This Unit is Located on the First and Second Floor



Unit Area  
91.7 m<sup>2</sup>

Terrace  
11 m<sup>2</sup>

Gross Area  
116.15 m<sup>2</sup>

Living Area  
4.4 × 3.8 m

Dinning Area  
3.8 × 3.6 m

Master Bedroom  
5.89 × 3.7 m

Master Bathroom  
2.4 × 1.7 m

Bedroom  
4.88 × 4.15 m

Lobby  
1.7 × 1.15 m

Bathroom  
2.4 × 1.7 m

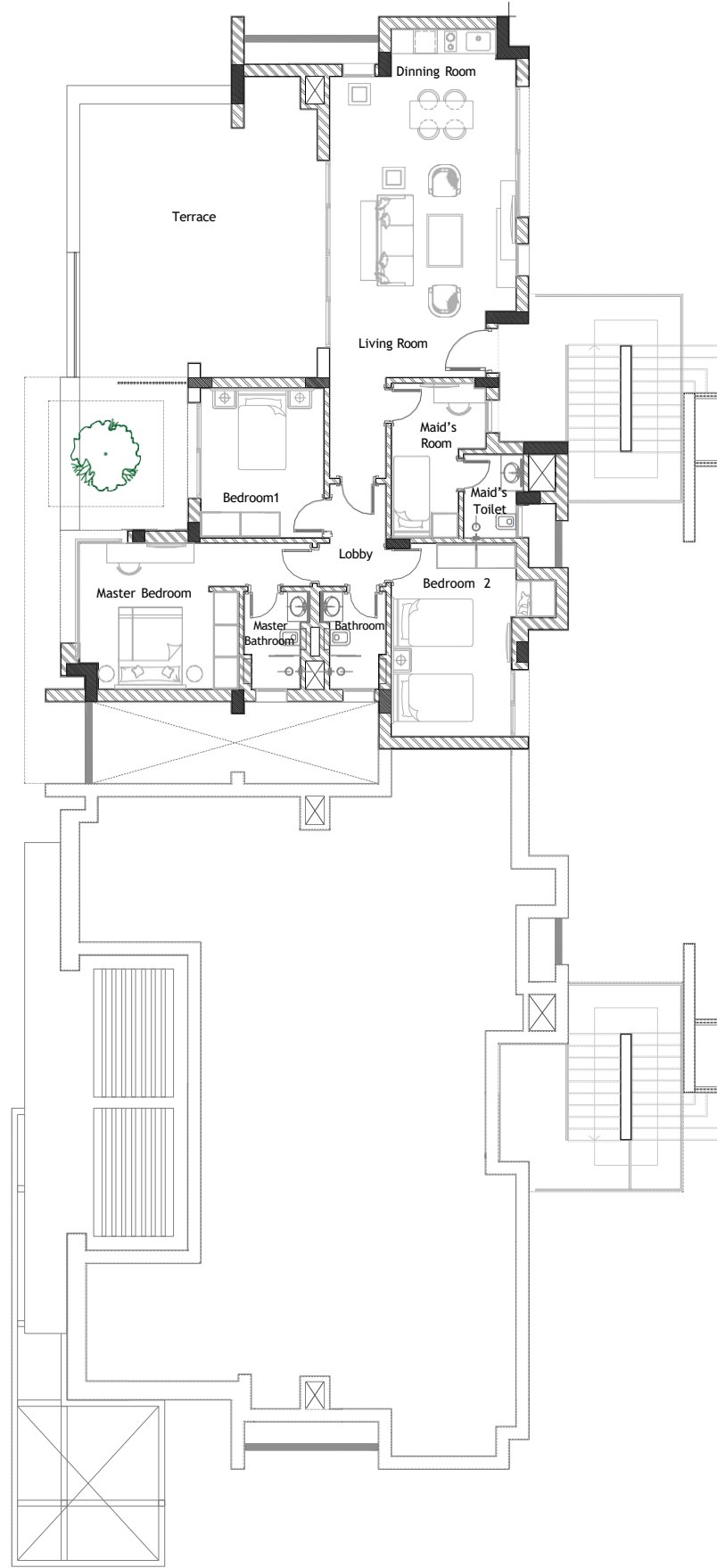
Terrace  
3.7 × 2.7 m

DISCLAIMER 1. Drawings are not to scale. 2. The architectural details, dimensions and area in this plan are based on Schematic Design information only, and final As-Built conditions may vary. 3. All units are sold as unfurnished apartments, without furniture and furnishings, without white goods provisions, etc. 4. All images used are for illustrative purposes only and do not represent the actual size, features, specifications, fittings, and furnishings. 5. Somabay reserves the right to make revisions/alterations, at its absolute discretion, and without liability.

# COVES B - 2 APARTMENT

TYPE 3

This Unit is Located on the Second Floor



Unit Area 137.9 m <sup>2</sup>
Terrace 21.5 m <sup>2</sup>
Open Terrace 23.0 m <sup>2</sup>
Gross Area 172.85 m <sup>2</sup>
Living Area 8.05 × 4.70 m
Dinning Area 4.7 × 3.3 m
Master Bedroom 5.89 × 3.7 m
Master Bathroom 2.4 × 1.7 m

Bedroom 1 3.80 × 3.15 m
Bedroom 2 4.88 × 4.15
Lobby 2.6 × 1.7 m
Bathroom 2.4 × 1.7 m
Maid's Room 3.9 × 2.4 m
Maid's Toilet 2.15 × 1.5 m
Terrace 10.7 × 6.0 m

DISCLAIMER 1. Drawings are not to scale. 2. The architectural details, dimensions and area in this plan are based on Schematic Design information only, and final As-Built conditions may vary. 3. All units are sold as unfurnished apartments, without furniture and furnishings, without white goods provisions, etc. 4. All images used are for illustrative purposes only and do not represent the actual size, features, specifications, fittings, and furnishings. 5. Somabay reserves the right to make revisions/alterations, at its absolute discretion, and without liability.



Somabay  
Experience



Marina.



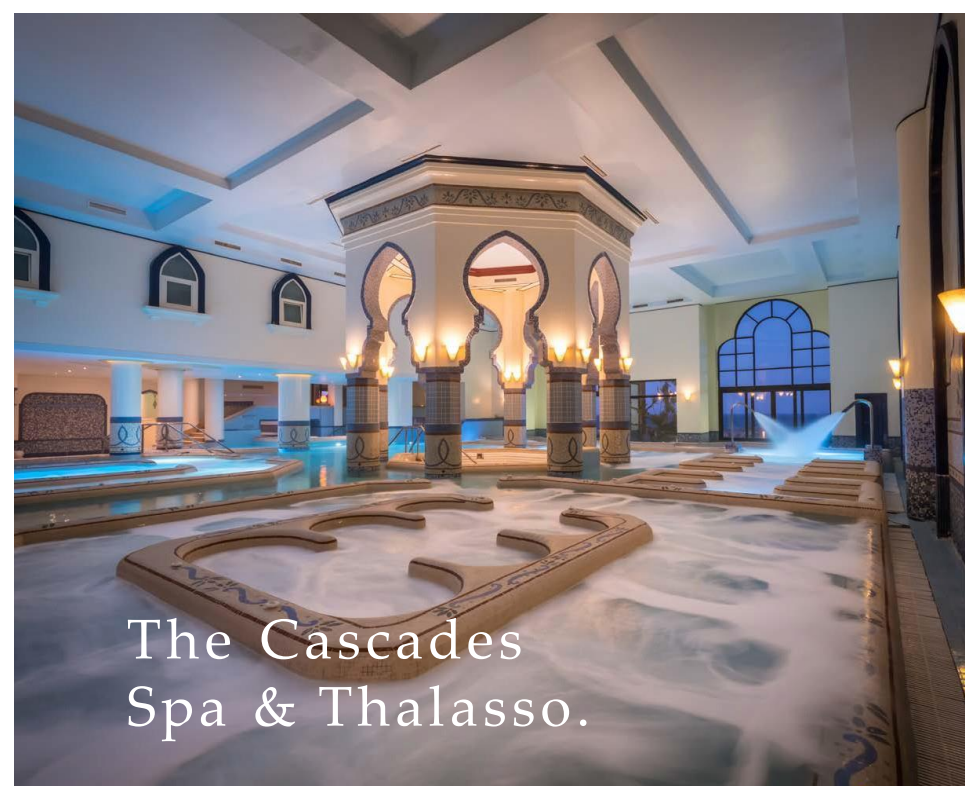
The Cascades  
championship  
golf course.



7 Bft  
The Kite  
House.



Orca  
dive center.



The Cascades  
Spa & Thalasso.

Start your day by teeing off at The Cascades Championship Golf Course then unwind at the award winning Cascades Spa and Thalasso and allow the healing powers of the Red Sea to restore balance to your body and soul. For the more adventurous, ORCA Dive Centre invites you to uncover the untapped wonders of Egypt's marine life at the site's colorful House Reef. Kitesurfing lovers can spend a serene afternoon gliding across flat waters at 7Bft —one of the top 3 kitesurfing spots in the world- followed by a world-class dining experience at any of the destination's signature restaurants. Blessed with dry desert winds, low humidity and a front-row seat on immaculate sea views, Somabay dictates an exciting itinerary for the whole family, transforming your everyday reality into a waking dream.



**stayr**  
BayLife home rentals

## Leave your house in good hands

Our hospitality professionals with international experience in luxury branded properties will be taking care of your home and will be available around the clock to make sure everything goes according to plan

## Invest in a relationship of trust

We invest all our efforts in marketing your house while determining the best rental price based on meticulous market research. We personalize each of our bookings according to your needs, guaranteeing a hassle-free home rental experience where you don't need to show up at every tenant's back and because we'll do it for you

## Enter into a signature collection

Stayr invites you to enter its signature collection where the exceptional is found everywhere. Each of our listed homes boasts a unique personality of its own, as well as a one-of-a-kind view to cater to every holiday mood





**SOMABAY  
PROPERTY  
RESALE**

## Property Resale

Our Property Resale Division is a dedicated arm of leading professionals who enable you to make the most out of our unit's value by selling it at the best market price, guaranteeing the highest return on investment.



SOMABAY

16390  
Somabay.com