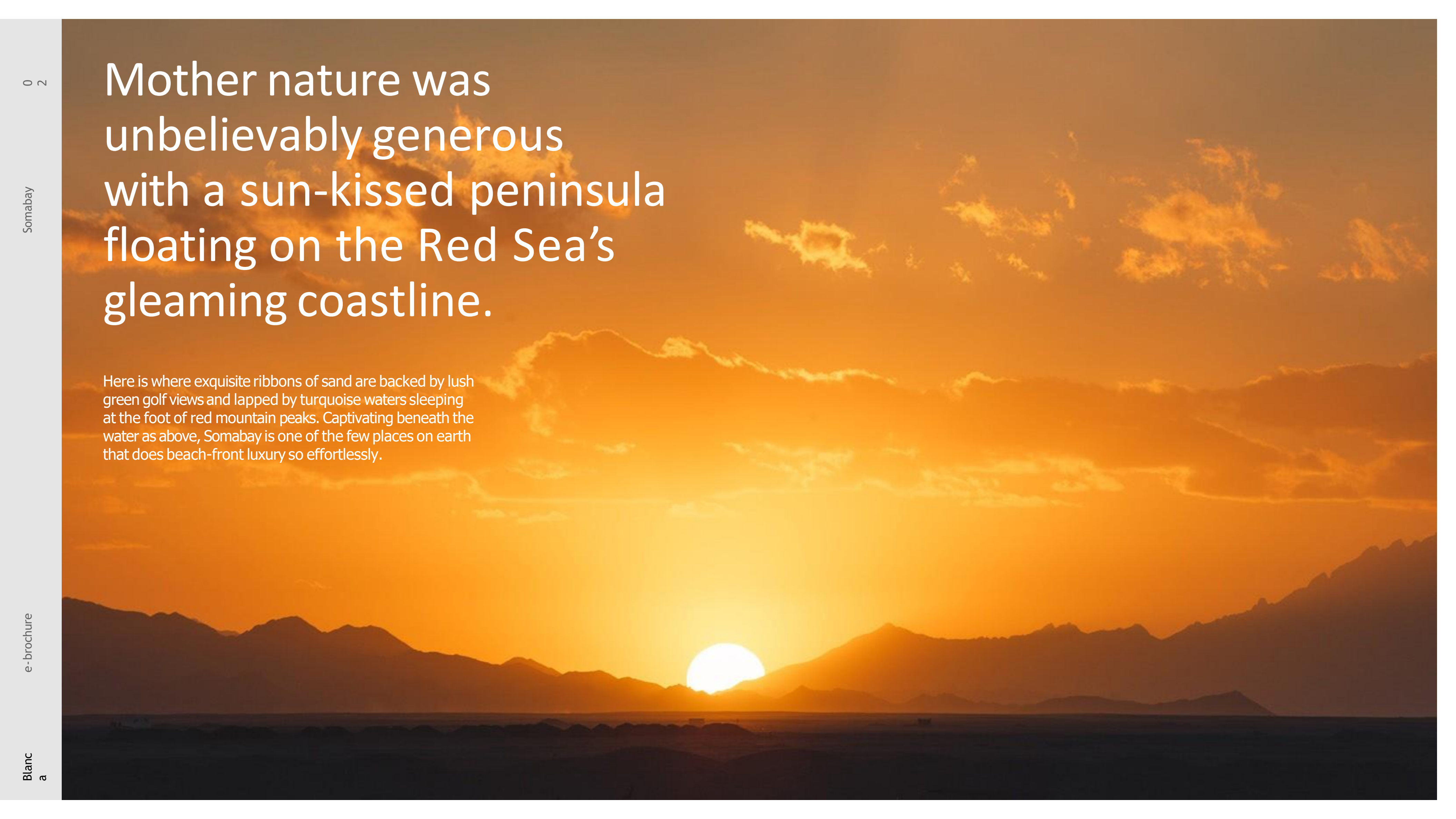


seafront signature
residences

BILAN CIRA

A full-page background image showing a sunset over a mountain range. The sun is a bright white circle partially obscured by the mountains, casting a warm orange glow across the sky and the silhouetted peaks. The sky is filled with wispy, orange-tinted clouds. The foreground shows the dark silhouette of a coastline or peninsula.

Mother nature was unbelievably generous with a sun-kissed peninsula floating on the Red Sea's gleaming coastline.

Here is where exquisite ribbons of sand are backed by lush green golf views and lapped by turquoise waters sleeping at the foot of red mountain peaks. Captivating beneath the water as above, Somabay is one of the few places on earth that does beach-front luxury so effortlessly.



Nestled on 10 million square meters of lush land, life at Somabay is where fantasy-scapes follow you wherever you go and sundrenched activities take infinite elevating forms.

Expertly conceived to evoke a laid-back European feel, every aspect of the heavenly development is sympathetic to nature, painting colorful experiences around its lively marina and soul-soothing jetty, so you can take recharge or decelerate.

Home to 5 luxury resort hotels and a signature portfolio of residential properties, Somabay's one-of-a-kind settings with its full complement of premium amenities are the stage for incomparable experiences alongside friends and family.

The Heart of the Bay, Exclusively Yours.

Blanca's exclusive location grants its community an ideal mix of uninterrupted relaxation, powered by the lively happenings of Somabay's White Beach next door. The development distinctly lies in a quiet spot straight in the heart of the bay to invite nature and heavenly views into every corner of your home.

Just a few steps away, White Beach is a permanent backstage pass to experience a magnetic beachfront lifestyle, lined with elegant sun-beds embracing the sea from every angle and perfected by relaxing music tunes, impeccable service and a scrumptious variety of dishes and colorful cocktails to delight.

Embraced by picturesque bay views, it's easy to see why Blanca is the enchanting heart of Somabay.



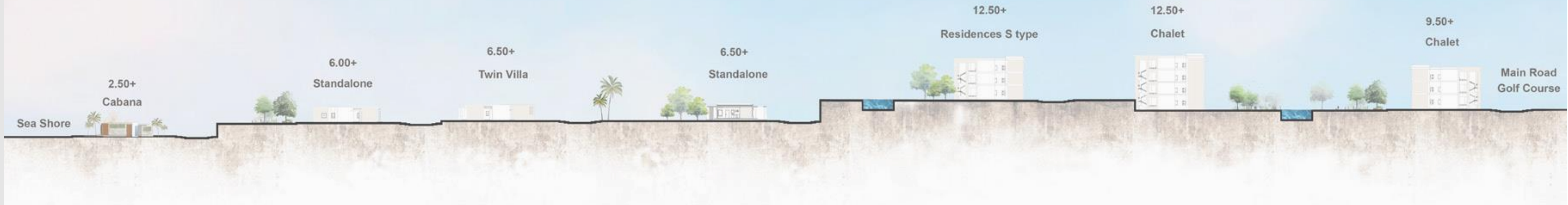
Blanca Masterplan

- Blanca Stand Alone Chalet & Twin Chalet
- Blanca Chalet
- Blanca S-Type Residence



- Standalone and Twin chalets
- Chalets (3 Keys)
- Chalets (4 Keys)
- Residences S Type (5 Keys)
- Residences S Type (6 Keys)
- Residences S Type (8 Keys)

Blanca Section Plan



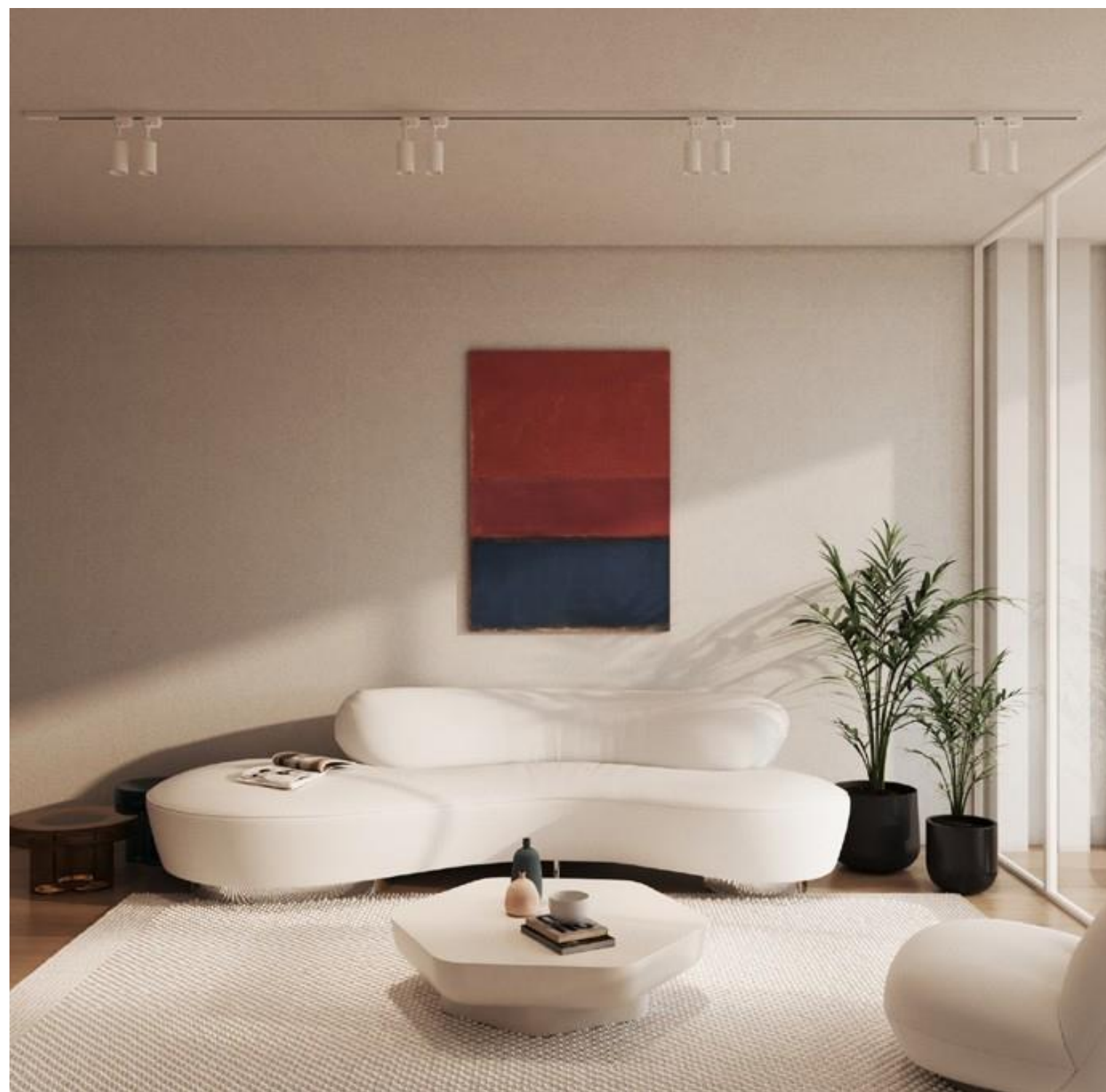
BLANCA

S-TYPE

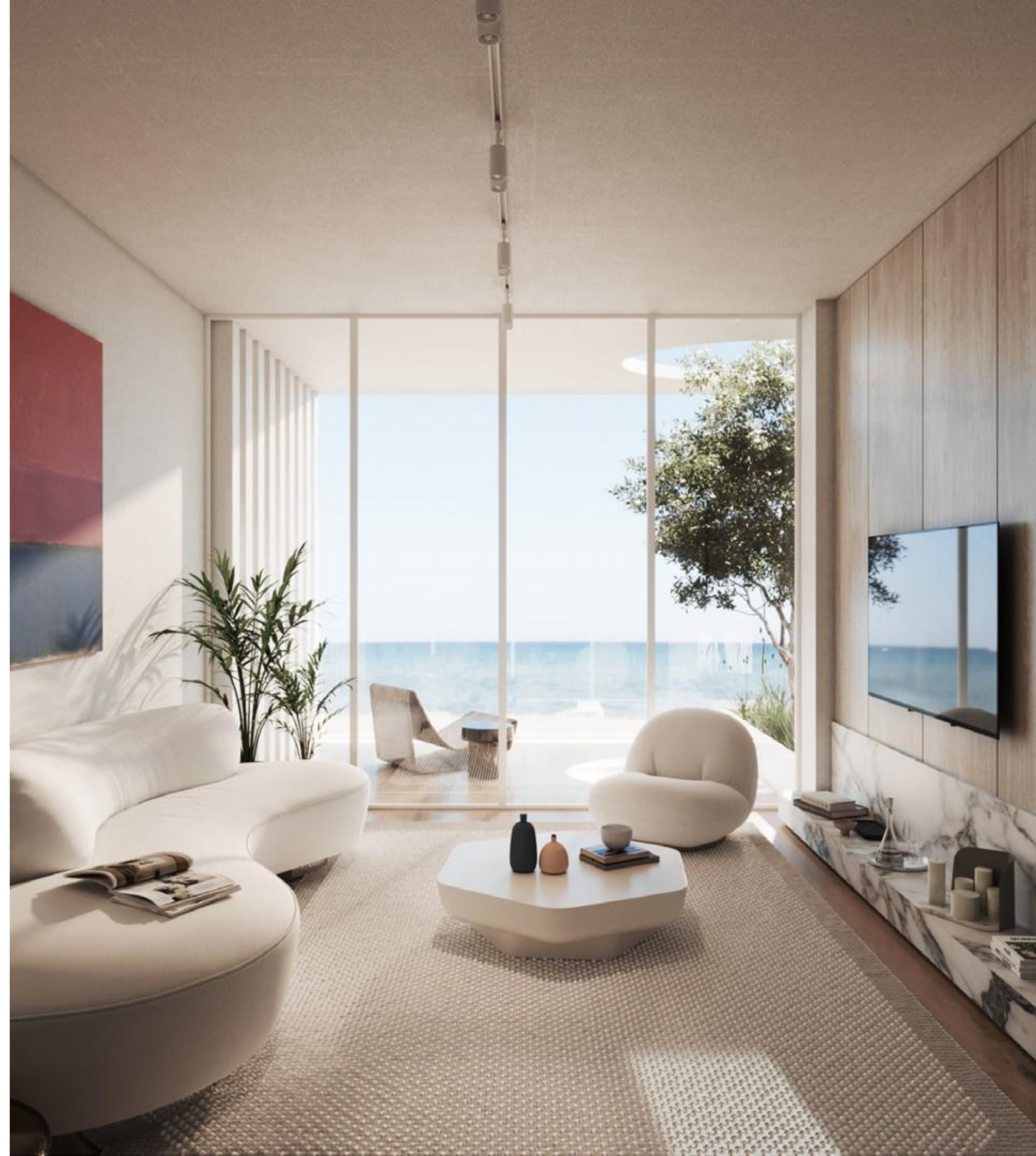
RESIDENCE







Blanca S-Type Residence | Reception





Blanca S-Type Residence | Dining Area



Blanca S-Type Residence | Master Bedroom



Blanca S-Type Residence

Ground Floor

2-Bedroom with Garden

Unit Area
133.00 m²

Garden Area
53.00 m²

Living Area
3.70 × 4.60

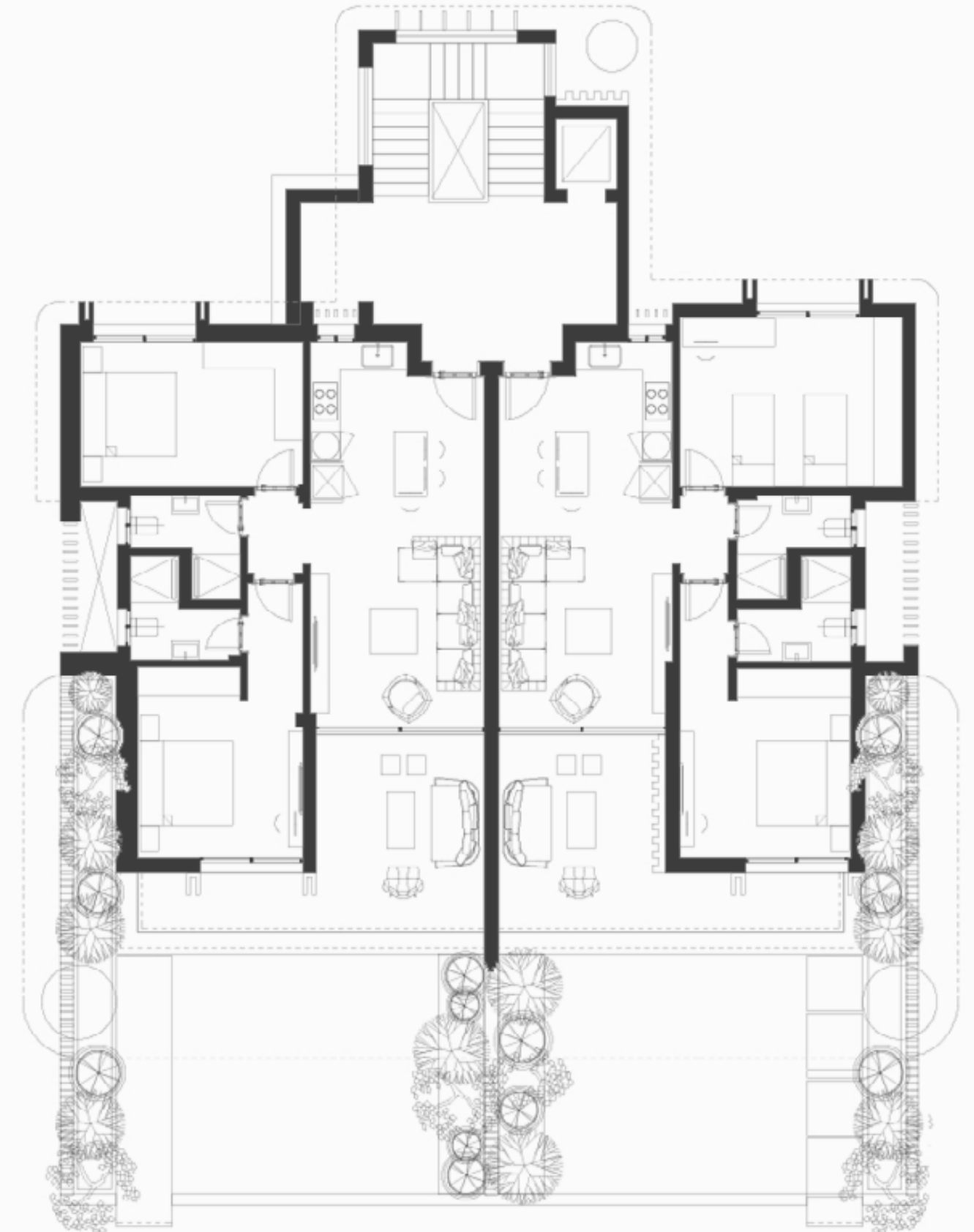
Bedrom
4.80 × 3.70

Master Bedroom
4.10 × 3.70

Bathroom
2.50 × 2.20

Master Bathroom
2.50 × 2.20

Kitchen
3.70 × 3.60



DISCLAIMER 1. Drawings are not to scale. 2. The architectural details, dimensions and area in this plan are based on Schematic Design information only, and final As-Built conditions may vary. 3. All units in this brochure are sold as unfurnished apartments, without furniture and furnishings, without white goods provisions, etc. 4. All images used in this brochure are for illustrative purposes only and do not represent the actual size, features, specifications, fittings, and furnishings. 5. Somabay reserves the right to make revisions/alterations, at its absolute discretion, and without liability.

Blanca S-Type Residence

First Floor

2-Bedroom

Unit Area
119.00 m²

Living Area
3.70 × 4.60

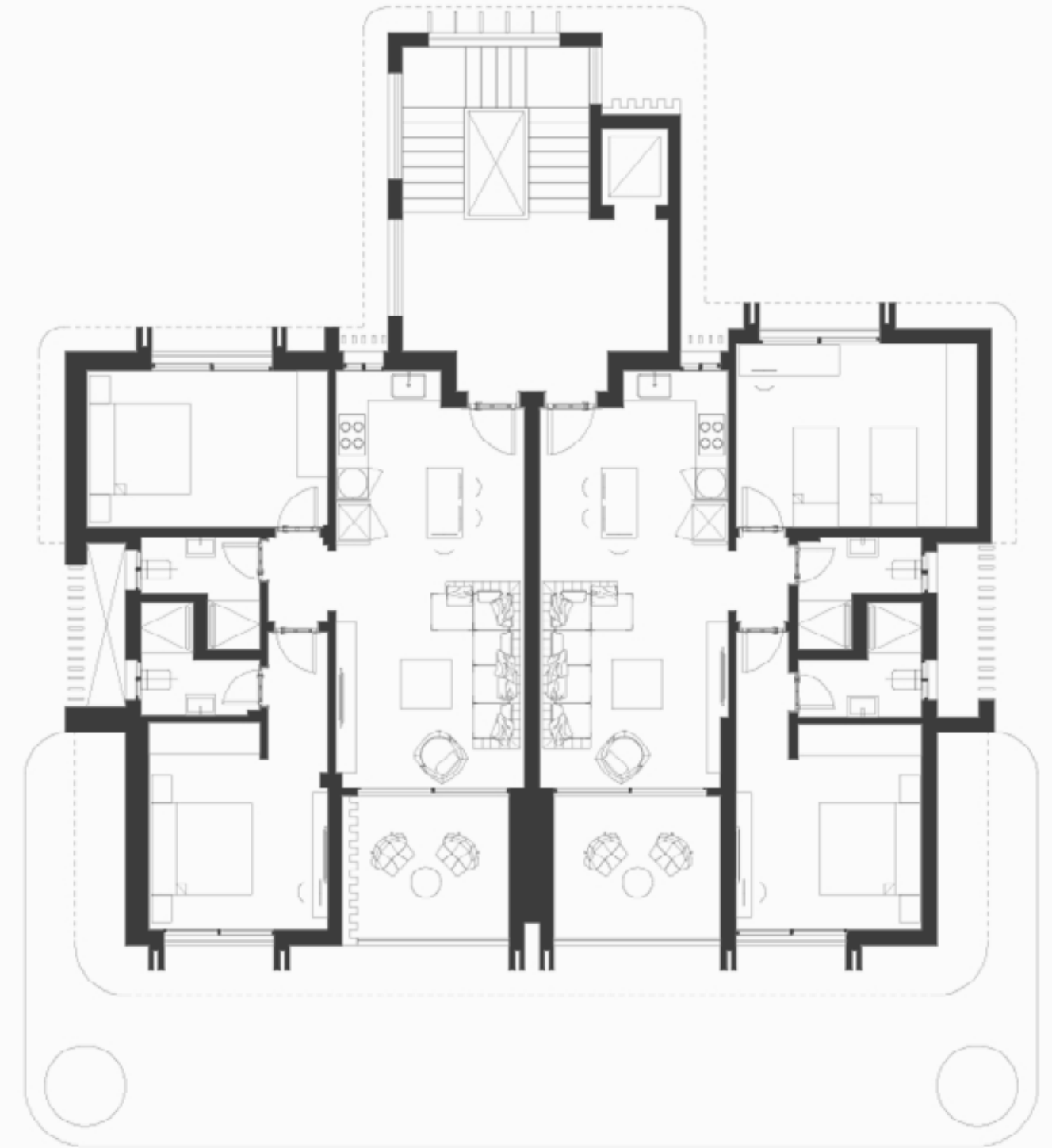
Master Bedroom
4.10 × 3.70

Master Bathroom
2.50 × 2.20

Bedrom
4.80 × 3.70

Bathroom
2.50 × 2.20

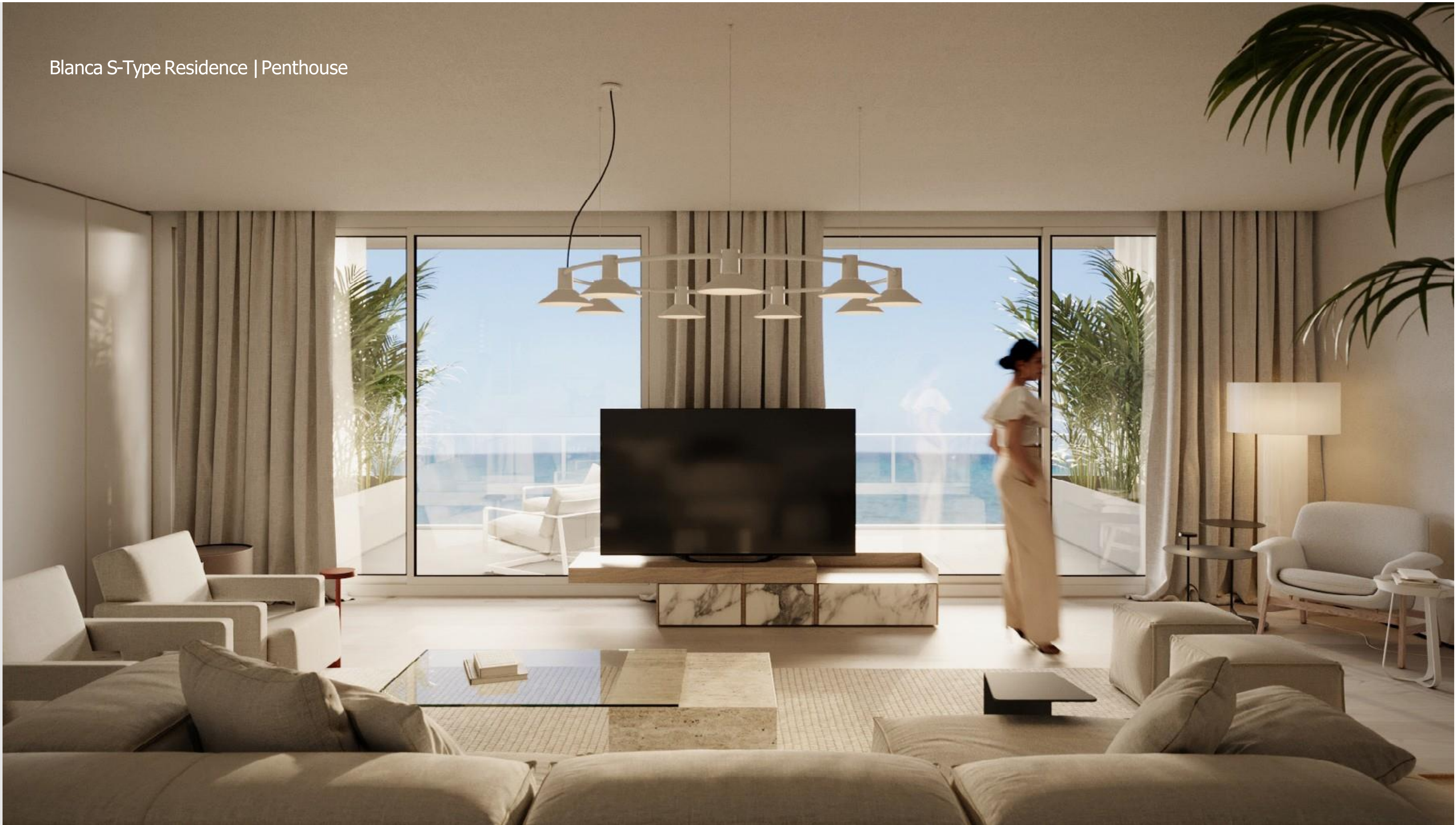
Kitchen
3.70 × 3.60



DISCLAIMER 1. Drawings are not to scale. 2. The architectural details, dimensions and area in this plan are based on Schematic Design information only, and final As-Built conditions may vary. 3. All units in this brochure are sold as unfurnished apartments, without furniture and furnishings, without white goods provisions, etc. 4. All images used in this brochure are for illustrative purposes only and do not represent the actual size, features, specifications, fittings, and furnishings. 5. Somabay reserves the right to make revisions/alterations, at its absolute discretion, and without liability.

Blanca S-Type Residence **Penthouse**

Blanca S-Type Residence | Penthouse



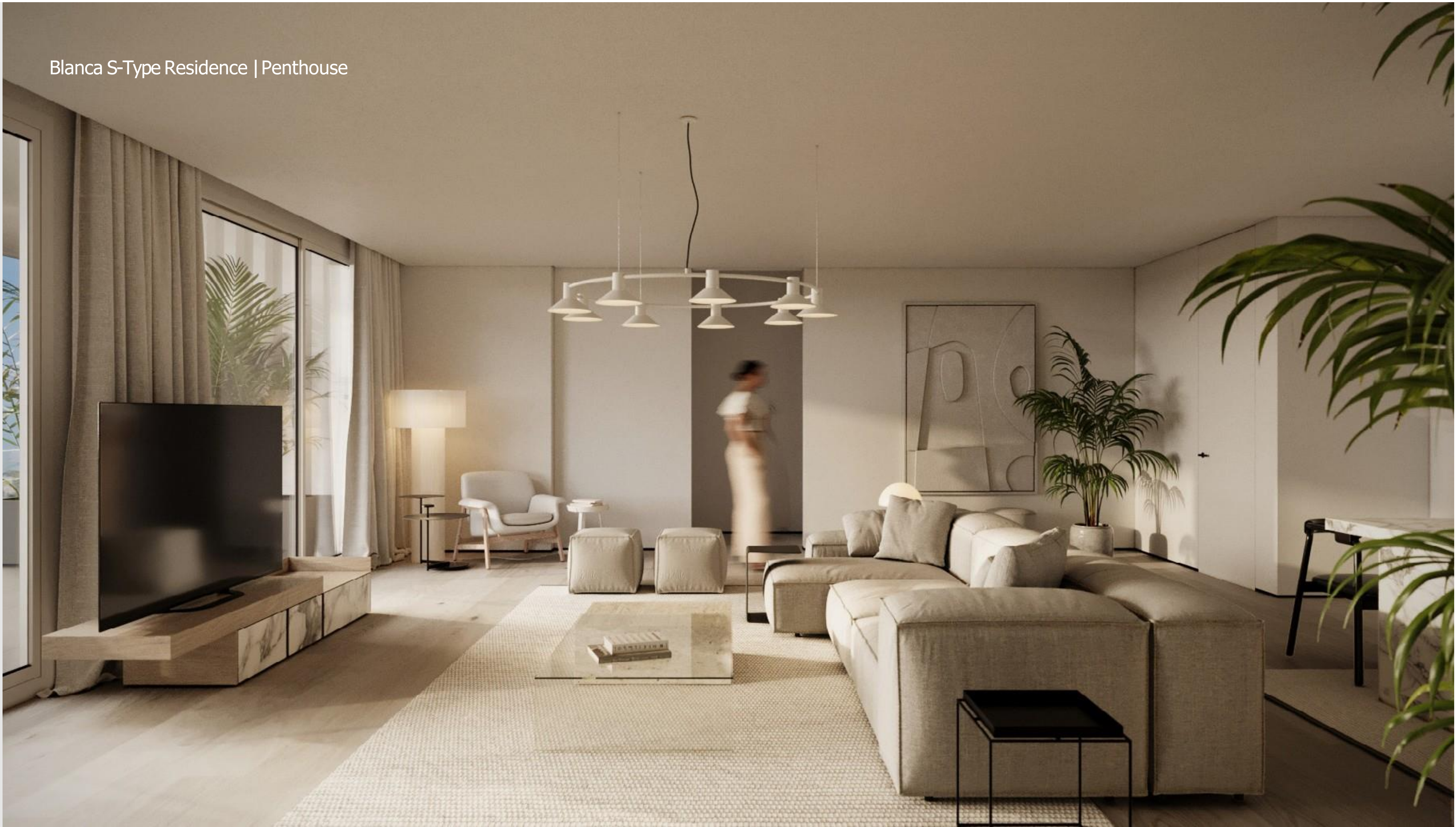
Blanca S-Type Residence | Penthouse



Blanca S-Type Residence | Penthouse



Blanca S-Type Residence | Penthouse



Blanca S-Type Residence

Penthouse

4-Bedroom

Unit Area
239.00 m²

Living Area
7.75 × 4.70

Guest Bathroom
7.75 × 4.70

Master Bedroom 01
4.10 × 3.70

Master Bathroom 01
2.50 × 2.20

Master Bedroom 02
4.10 × 3.70

Master Bathroom 02
2.50 × 2.20

Bedroom 01
4.80 × 3.70

Bathroom 01
2.50 × 2.20

Bedroom 02
4.90 × 3.70

Bathroom 02
2.50 × 2.20

Kitchen & Dining
3.40 × 2.50



DISCLAIMER 1. Drawings are not to scale. 2. The architectural details, dimensions and area in this plan are based on Schematic Design information only, and final As-Built conditions may vary. 3. All units in this brochure are sold as unfurnished apartments, without furniture and furnishings, without white goods provisions, etc. 4. All images used in this brochure are for illustrative purposes only and do not represent the actual size, features, specifications, fittings, and furnishings. 5. Somabay reserves the right to make revisions/alterations, at its absolute discretion, and without liability.

BLANCA

STAND — ALONE

CHALET













Blanca Stand Alone Chalet | Living & Dining Area



Blanca Stand Alone Chalet | Living & Dining Area



Blanca Stand Alone Chalet | Living & Dining Area



Blanca Stand Alone Chalet | Master Bedroom



Blanca Stand Alone Chalet | Master Bedroom



Blanca Stand Alone Chalet | Master Bedroom



Blanca Stand Alone Chalet

3-Bedroom

Total Unit Area
139.00 m²

Plot Size Ranges
from 363 m²—391 m²

Depending on Unit Selected

Living Area
5.00 × 5.30

Bedroom 02
3.60 × 3.30

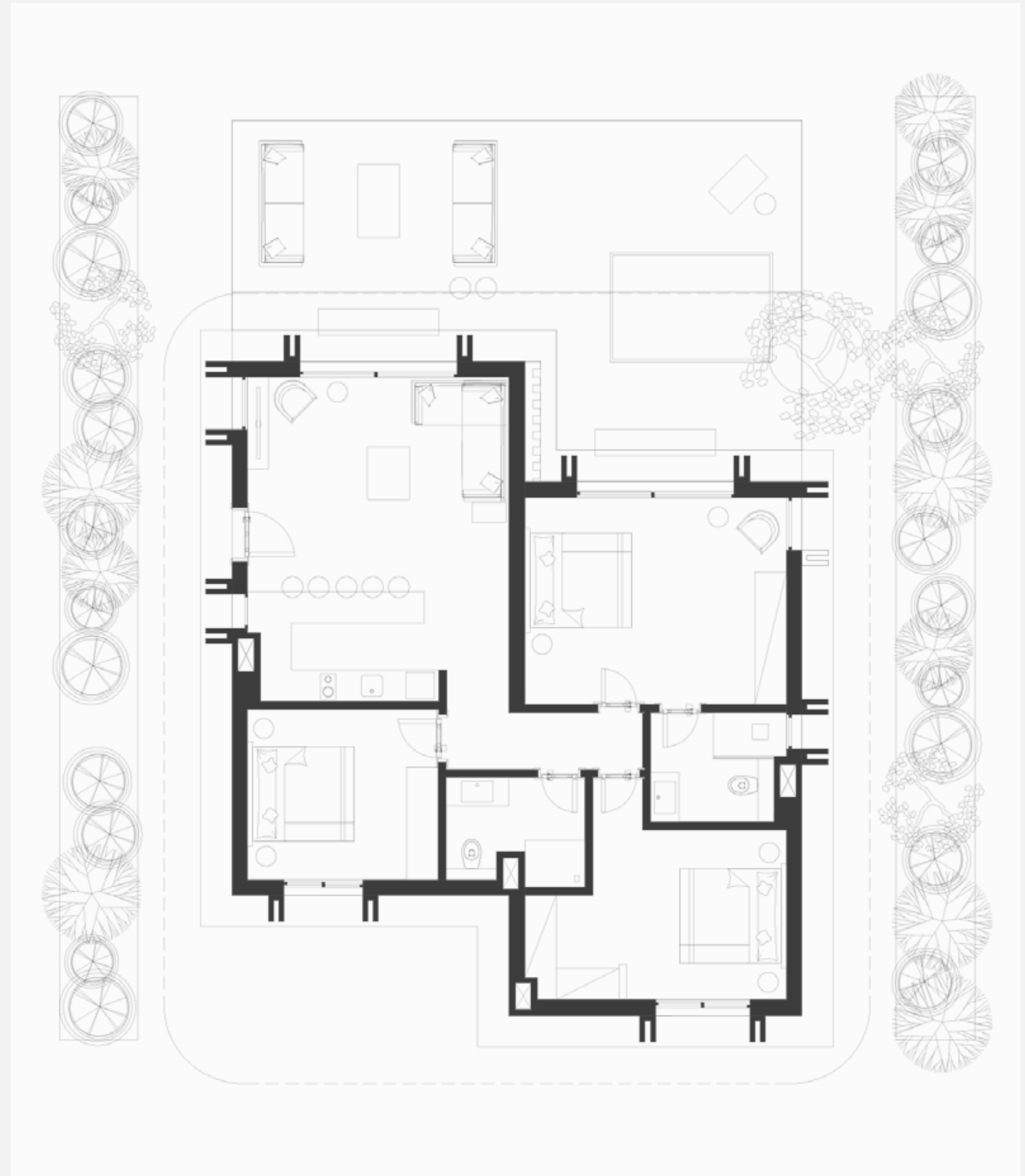
Master Bedroom
5.00 × 4.00

Bathroom
2.60 × 2.10

Master Bathroom
2.60 × 2.10

Kitchen
3.60 × 2.60

Bedroom 01
5.00 × 3.30



DISCLAIMER 1. Drawings are not to scale. 2. The architectural details, dimensions and area in this plan are based on Schematic Design information only, and final As-Built conditions may vary. 3. All units in this brochure are sold as unfurnished apartments, without furniture and furnishings, without white goods provisions, etc. 4. All images used in this brochure are for illustrative purposes only and do not represent the actual size, features, specifications, fittings, and furnishings. 5. Somabay reserves the right to make revisions/alterations, at its absolute discretion, and without liability.

BLANCA

TWIN

CHALET









Blanca Twin Chalet | Living & Dining Area





Blanca Twin Chalet | Living & Dining Area



Blanca Twin Chalet | Master Bedroom



Blanca Twin Chalet

1-Bedroom

Total Unit Area
67.00 m²

Plot Size Ranges
from 179 m²—243 m²

Depending on Unit Selected

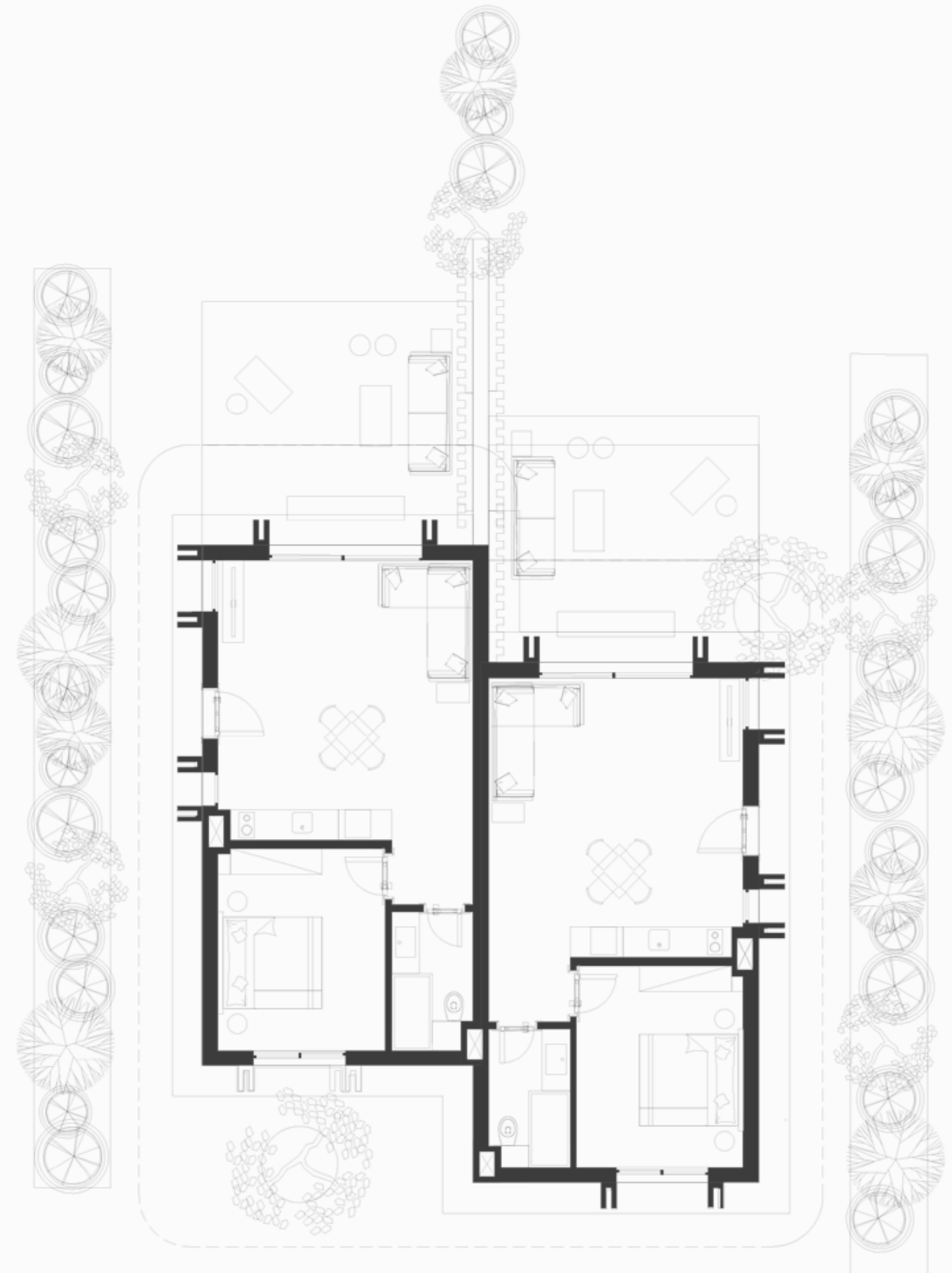
Living Area
5.00 × 3.50

Bathroom
2.70 × 1.60

Bedroom
4.00 × 3.30

Kitchen
3.00 × 2.30

DISCLAIMER 1. Drawings are not to scale. 2. The architectural details, dimensions and area in this plan are based on Schematic Design information only, and final As-Built conditions may vary. 3. All units in this brochure are sold as unfurnished apartments, without furniture and furnishings, without white goods provisions, etc. 4. All images used in this brochure are for illustrative purposes only and do not represent the actual size, features, specifications, fittings, and furnishings. 5. Somabay reserves the right to make revisions/alterations, at its absolute discretion, and without liability.



BLANCA

CHALET









Blanca 1-Bedroom Chalet | Living & Dining Area



Blanca 1-Bedroom Chalet | Living & Dining Area





Blanca 1-Bedroom Chalet | Master Bedroom

Blanca Chalet

Ground Floor

1-Bedroom Chalet with Garden

Unit Area
67.00 m²

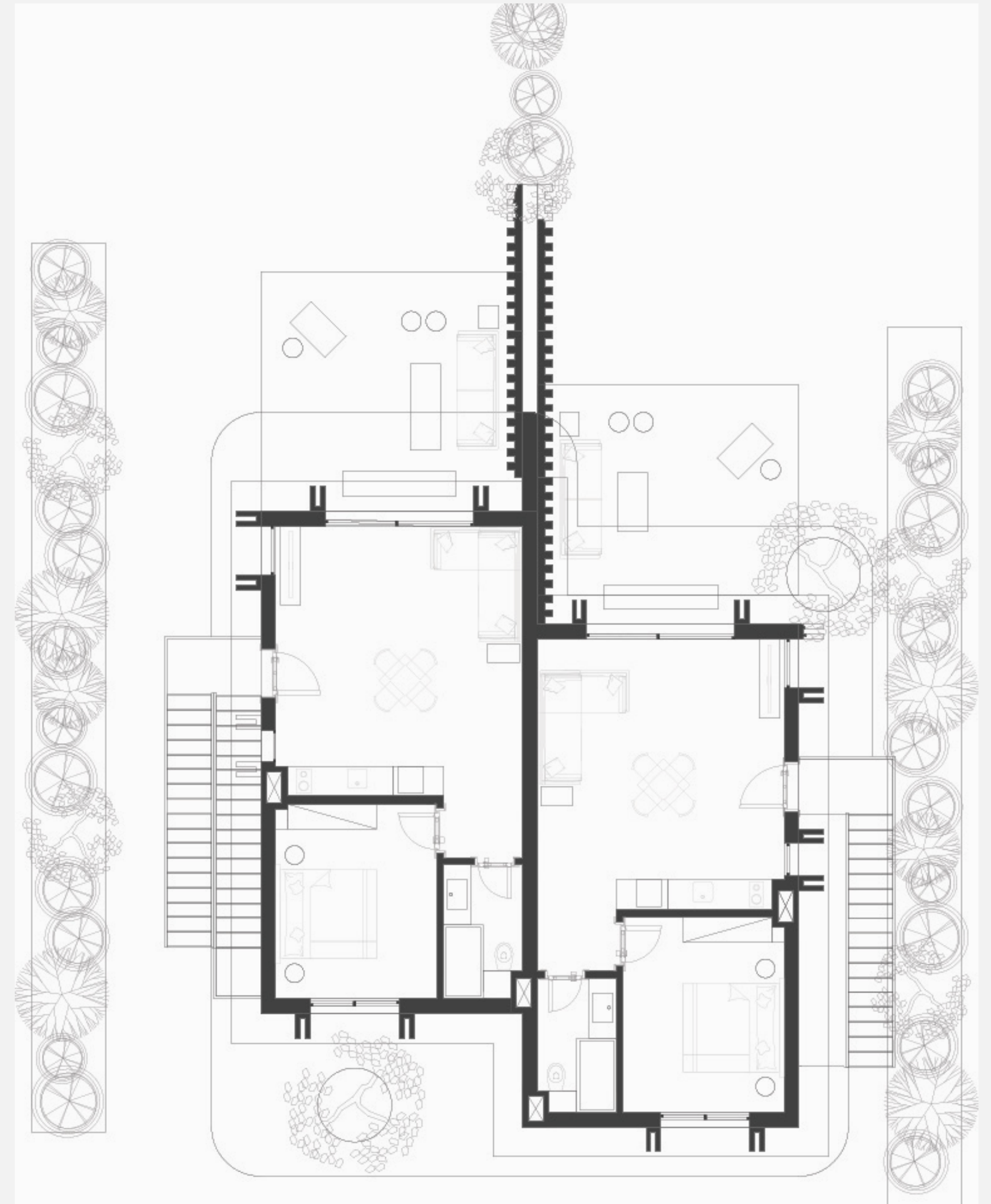
Garden Area
28.00 m²

Living Area
5.00 × 3.50

Bathroom
2.70 × 1.60

Bedroom
4.00 × 3.30

Kitchen
3.40 × 2.00



DISCLAIMER 1. Drawings are not to scale. 2. The architectural details, dimensions and area in this plan are based on Schematic Design information only, and final As-Built conditions may vary. 3. All units in this brochure are sold as unfurnished apartments, without furniture and furnishings, without white goods provisions, etc. 4. All images used in this brochure are for illustrative purposes only and do not represent the actual size, features, specifications, fittings, and furnishings. 5. Somabay reserves the right to make revisions/alterations, at its absolute discretion, and without liability.

Blanca Chalet

First Floor

1-Bedroom Chalet

Unit Area
70.00 m²

Living Area
5.00 × 3.50

Bedroom
4.00 × 3.30

Bathroom
2.70 × 1.60

Kitchen
3.40 × 2.00



DISCLAIMER 1. Drawings are not to scale. 2. The architectural details, dimensions and area in this plan are based on Schematic Design information only, and final As-Built conditions may vary. 3. All units in this brochure are sold as unfurnished apartments, without furniture and furnishings, without white goods provisions, etc. 4. All images used in this brochure are for illustrative purposes only and do not represent the actual size, features, specifications, fittings, and furnishings. 5. Somabay reserves the right to make revisions/alterations, at its absolute discretion, and without liability.

Blanca 3-Bedroom Chalet



Blanca 3-Bedroom Chalet | Living & Dining Area





Blanca 3-Bedroom Chalet | Living & Dining Area



Blanca 3-Bedroom Chalet | Master Bedroom



Blanca Chalet

Ground Floor

3-Bedroom Chalet with Garden

Unit Area
139.00 m²

Garden Area
56.00 m²

Bedroom 01
3.25 × 3.60

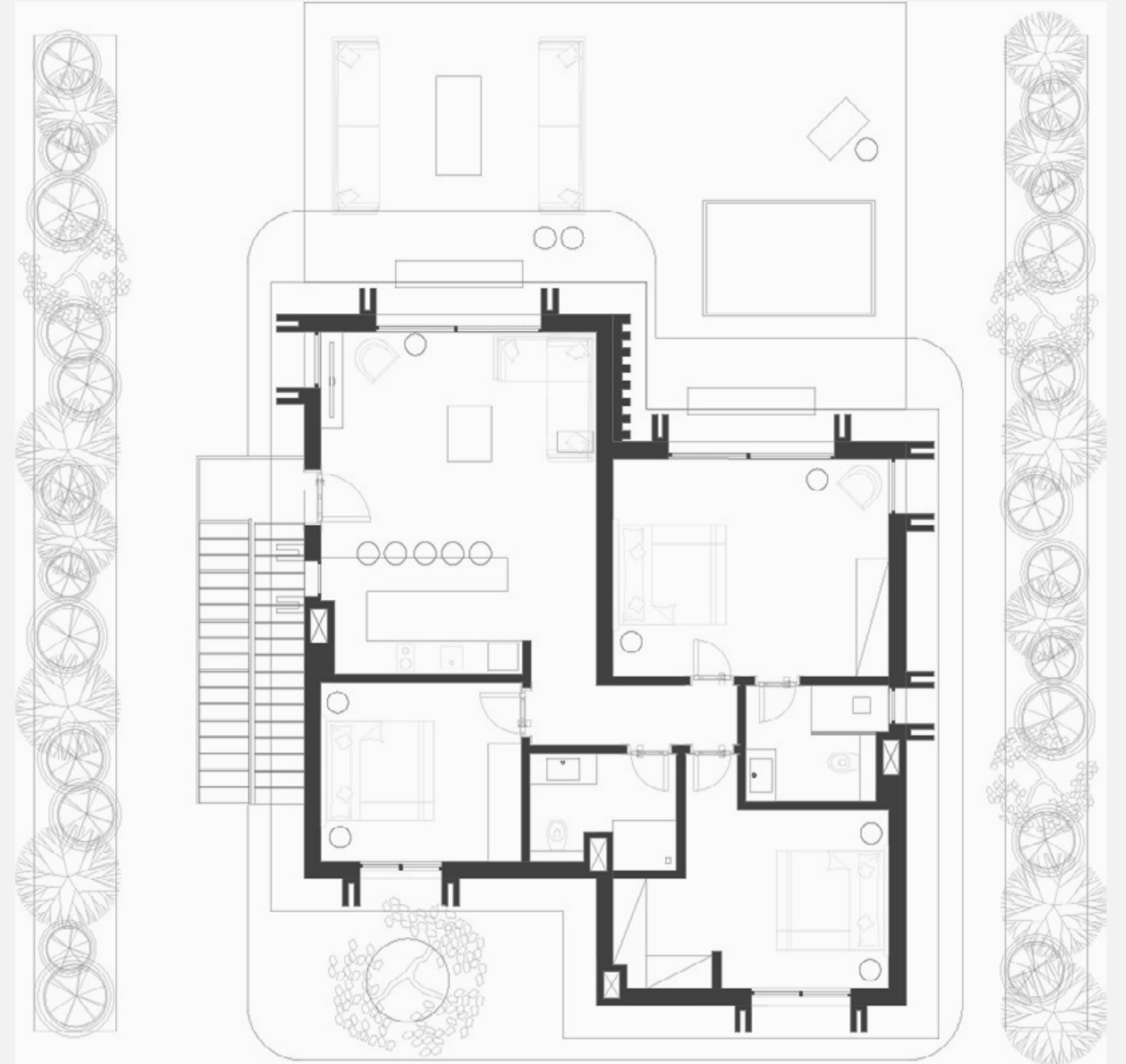
Kitchen & dining
6.20 × 5.00

Bedroom 02
3.25 × 3.70

Bathroom 01
1.90 × 2.60

Bedroom 03
5.00 × 3.95

Bathroom 02
2.10 × 2.30



DISCLAIMER 1. Drawings are not to scale. 2. The architectural details, dimensions and area in this plan are based on Schematic Design information only, and final As-Built conditions may vary. 3. All units in this brochure are sold as unfurnished apartments, without furniture and furnishings, without white goods provisions, etc. 4. All images used in this brochure are for illustrative purposes only and do not represent the actual size, features, specifications, fittings, and furnishings. 5. Somabay reserves the right to make revisions/alterations, at its absolute discretion, and without liability.

Blanca Chalet

First Floor

3-Bedroom Chalet

Unit Area
134.00 m²

Bedroom 01
3.25 × 3.60

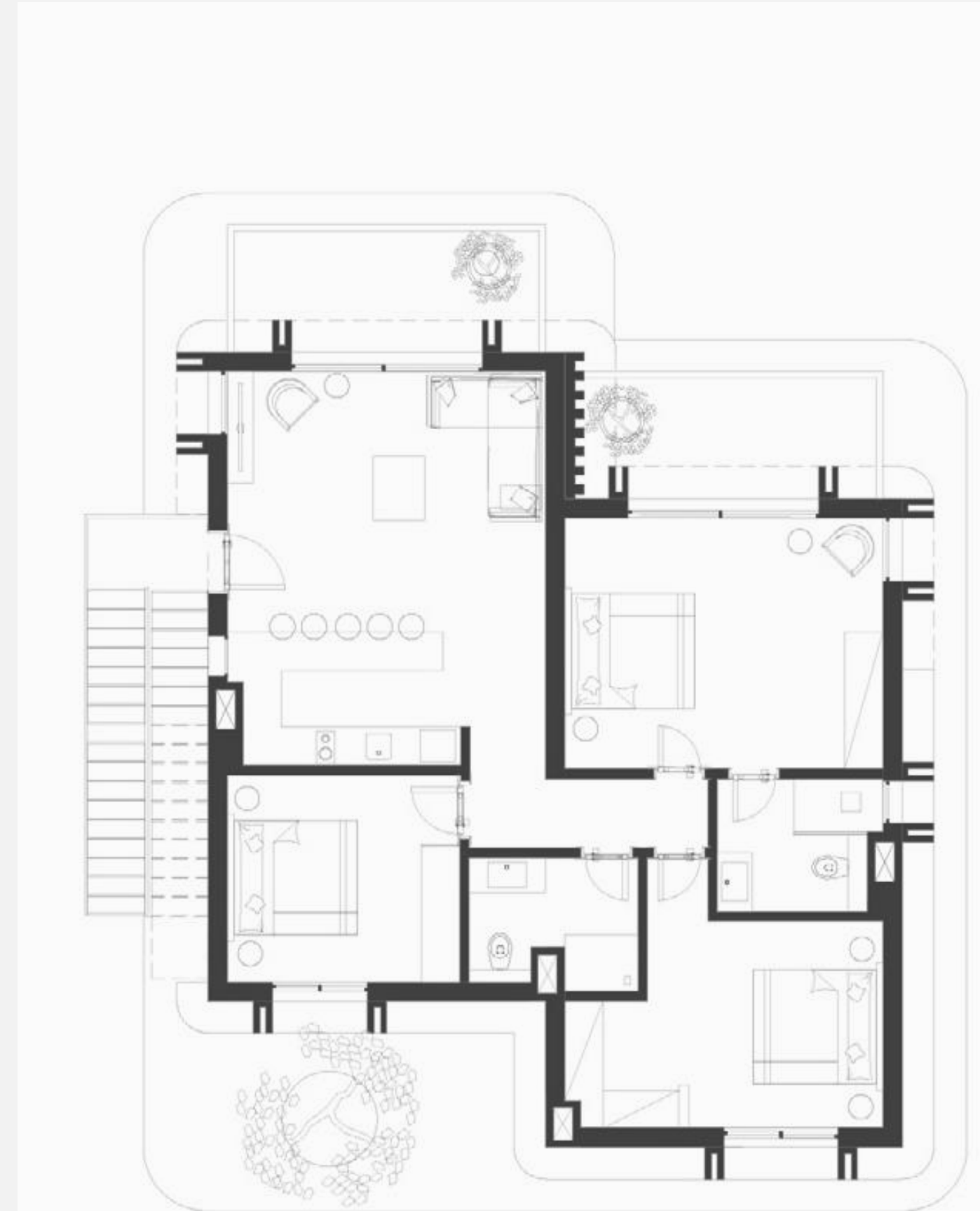
Bedroom 02
3.25 × 3.70

Bedroom 03
5.00 × 3.95

Kitchen & dining
6.20 × 5.00

Bathroom 01
1.90 × 2.60

Bathroom 02
2.10 × 2.30

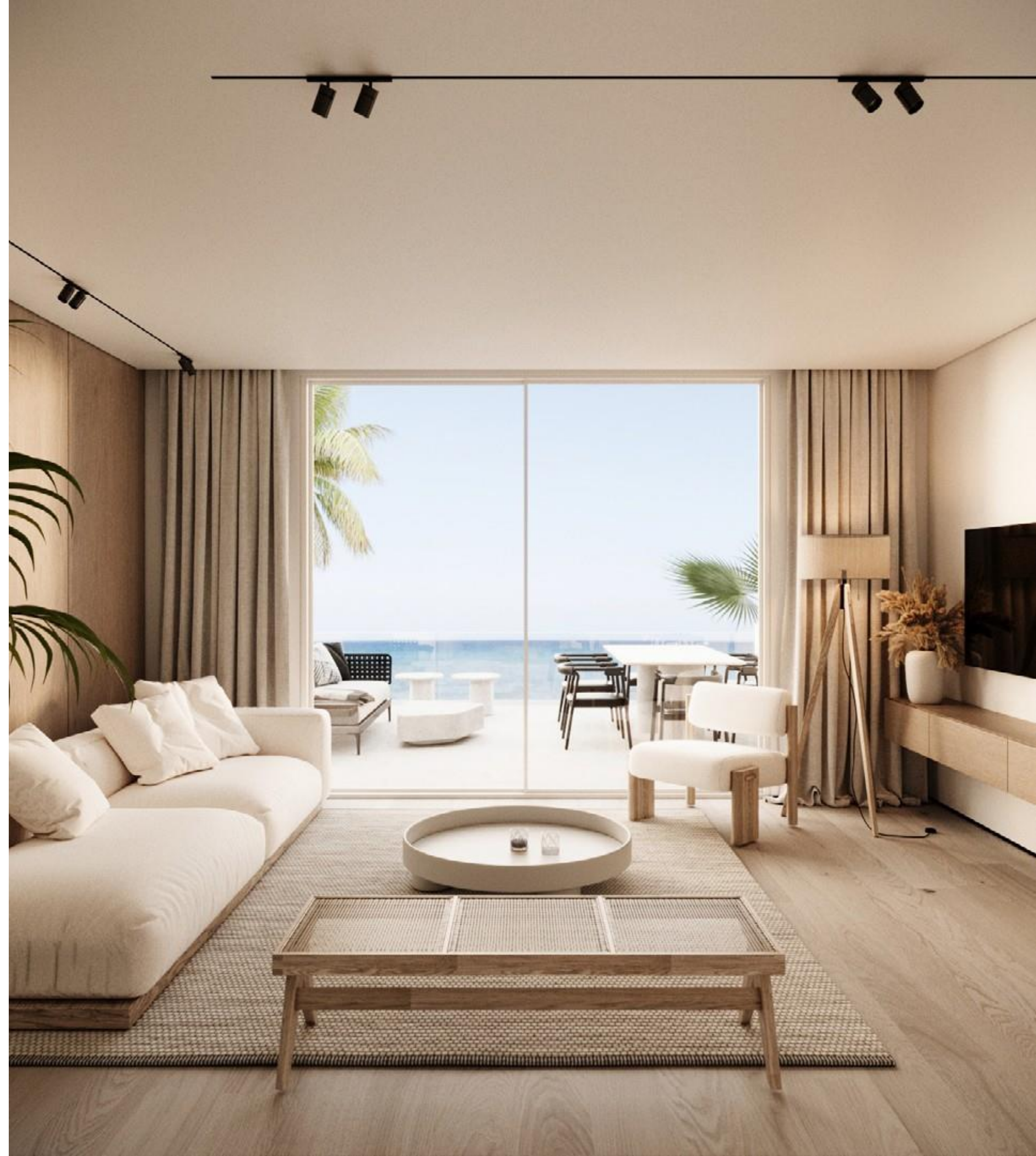


DISCLAIMER 1. Drawings are not to scale. 2. The architectural details, dimensions and area in this plan are based on Schematic Design information only, and final As-Built conditions may vary. 3. All units in this brochure are sold as unfurnished apartments, without furniture and furnishings, without white goods provisions, etc. 4. All images used in this brochure are for illustrative purposes only and do not represent the actual size, features, specifications, fittings, and furnishings. 5. Somabay reserves the right to make revisions/alterations, at its absolute discretion, and without liability.

Blanca Chalet **Penthouse**



Blanca Chalet Penthouse | Living & Dining Area





Blanca Chalet Penthouse | Living & Dining Area



Blanca Chalet Penthouse | Master Bedroom



Blanca Chalet Penthouse

2-Bedroom Chalet

Unit Area
96.00 m²

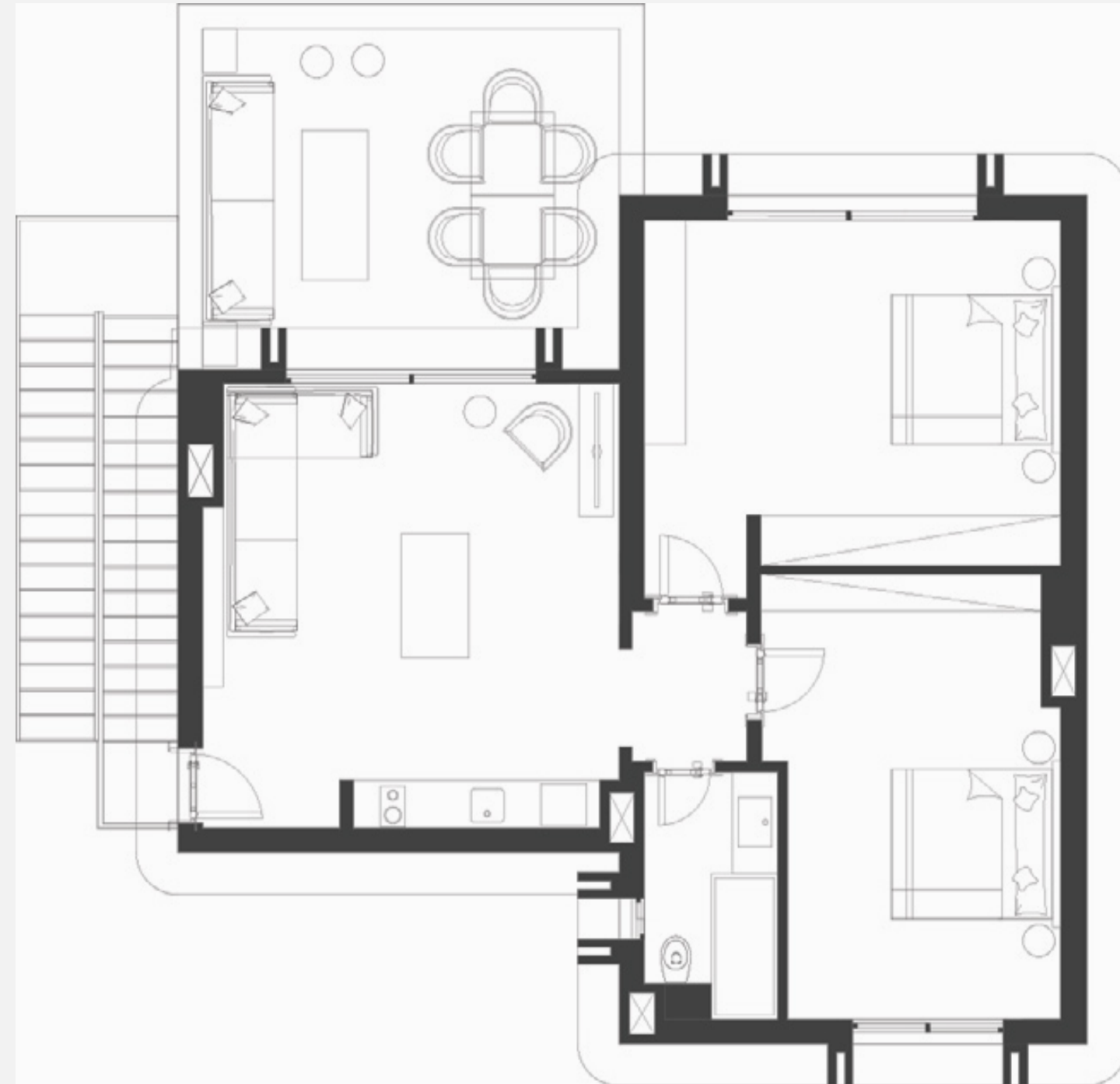
Living Area
5.00 × 3.50

Bedroom 01
5.30 × 3.30

Bedroom 02
4.10 × 5.00

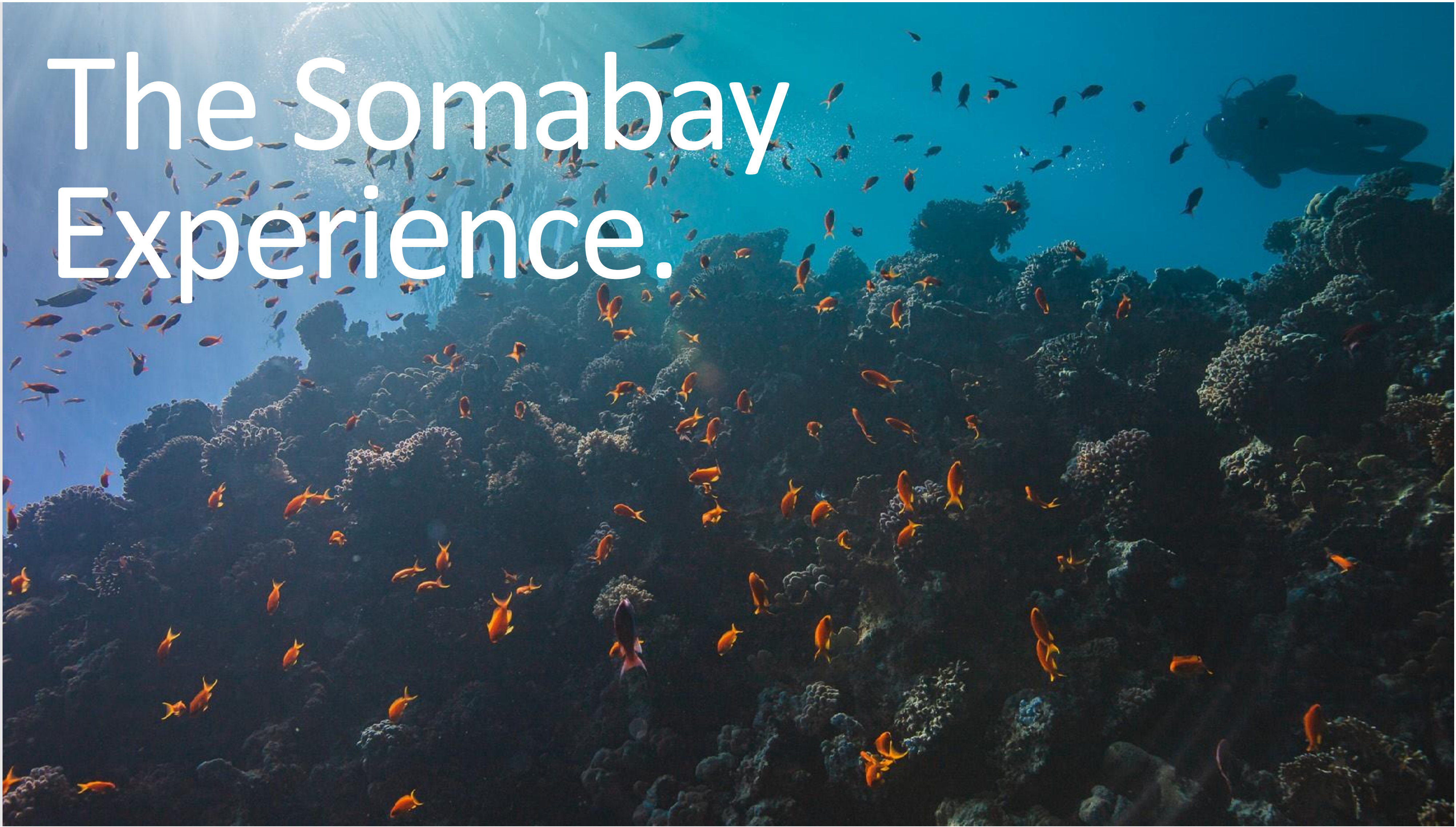
Bathroom
2.70 × 1.60

Kitchen
3.40 × 2.00



DISCLAIMER 1. Drawings are not to scale. 2. The architectural details, dimensions and area in this plan are based on Schematic Design information only, and final As-Built conditions may vary. 3. All units in this brochure are sold as unfurnished apartments, without furniture and furnishings, without white goods provisions, etc. 4. All images used in this brochure are for illustrative purposes only and do not represent the actual size, features, specifications, fittings, and furnishings. 5. Somabay reserves the right to make revisions/alterations, at its absolute discretion, and without liability.

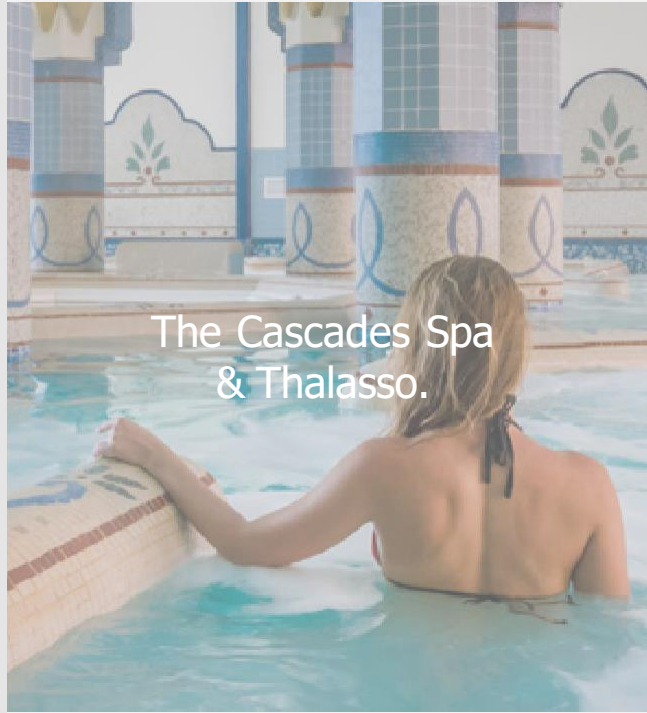
The Somabay Experience.



The Somabay Experience.

Start your day by teeing off at The Cascades Championship Golf Course then unwind at the award winning Cascades Spa and Thalasso and allow the healing powers of the Red Sea to restore balance to your body and soul. For the more adventurous, ORCA Dive Centre invites you to uncover the untapped wonders of Egypt's marine life at the site's colorful House Reef.

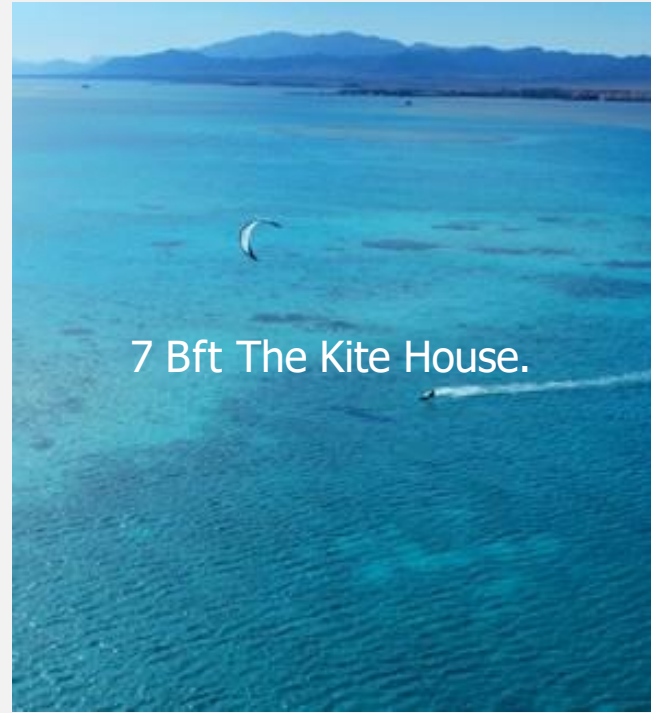
Kitesurfing lovers can spend a serene afternoon gliding across flat waters at 7Bft —one of the top 3 kitesurfing spots in the world- followed by a world-class dining experience at any of the destination's signature restaurants. Blessed with dry desert winds, low humidity and a front-row seat on immaculate sea views, Somabay dictates an exciting itinerary for the whole family, transforming your everyday reality into a waking dream.



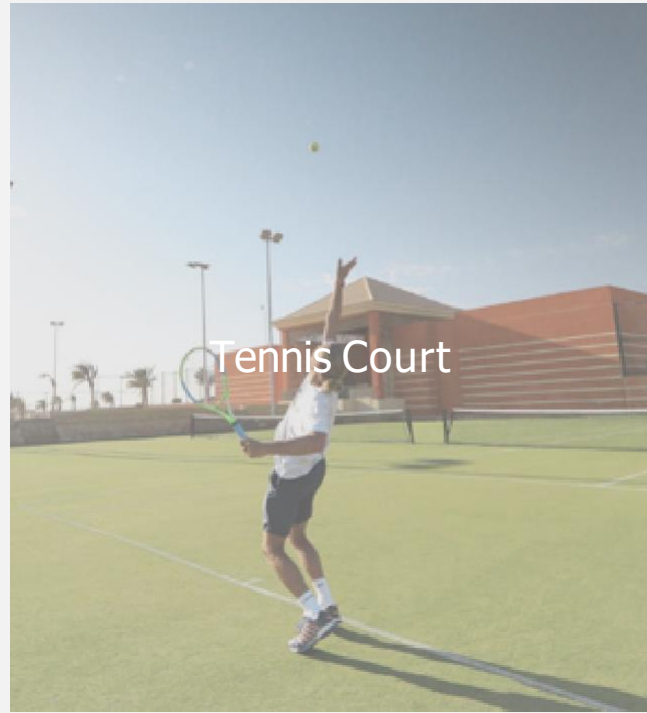
The Cascades Spa & Thalasso.



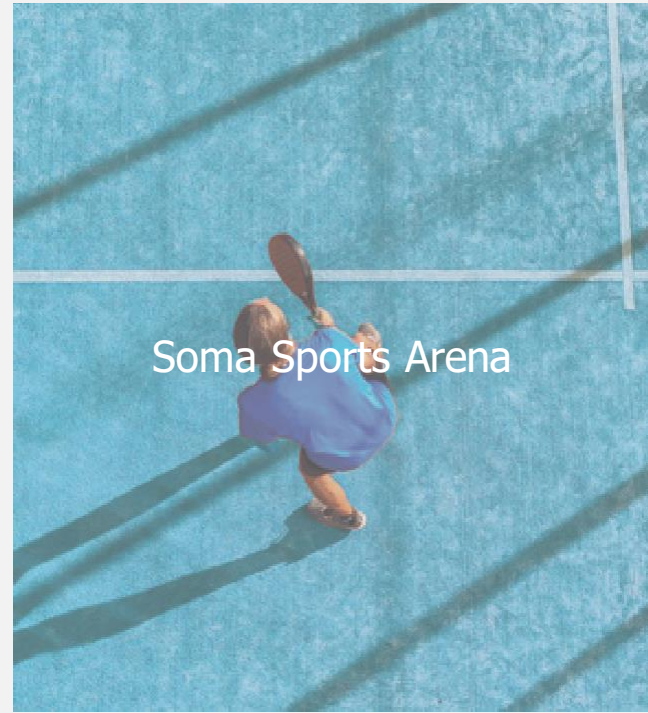
Somabay Golf Course.



7 Bft The Kite House.



Tennis Court



Soma Sports Arena



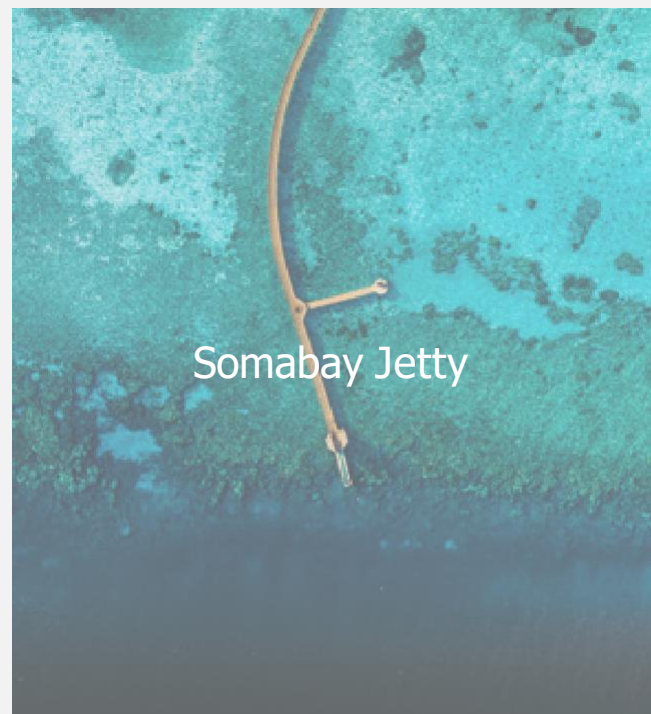
Soma Raceway



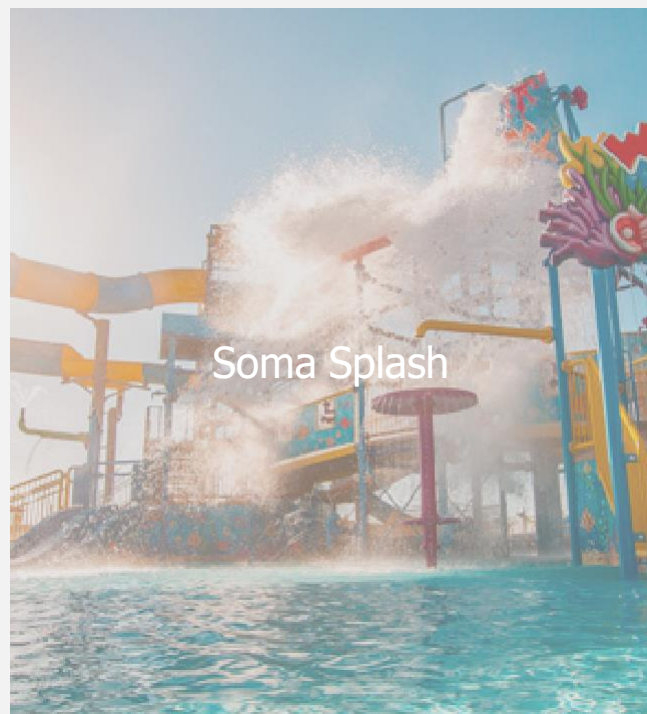
Somabay Marina



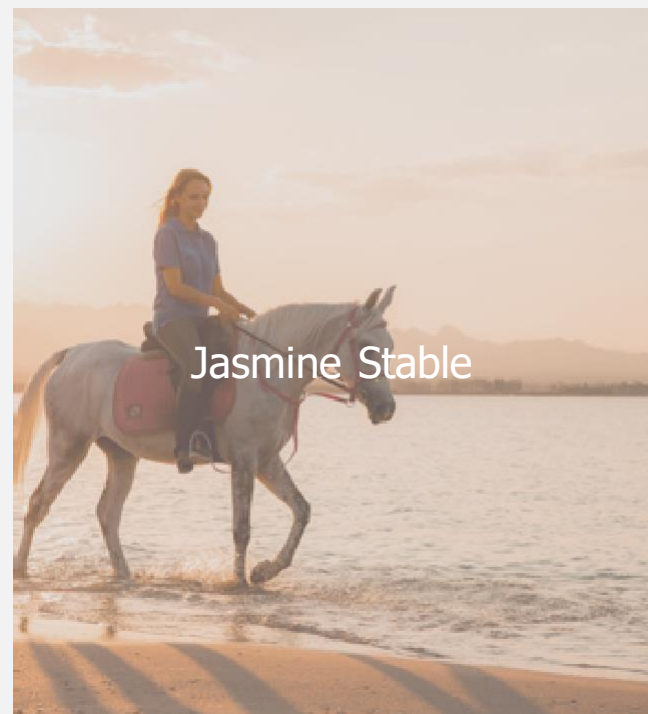
ORCA Dive Center.



Somabay Jetty



Soma Splash



Jasmine Stable



Alex Safari

Postal Code

41516, Somabay Office

Head Office

4A Hassan Sabry St. Zamalek, Cairo, Egypt

Sales Office

Capital Business Park - Building B4 - 26th of July Corridor, 1st Floor,
Sheikh Zayed, Giza, Egypt.

DiscoverSomabay

Capital Business Park - Ground Floor, Sheikh Zayed, Giza, Egypt.

16390

info@somabayrealestate.com

somabay.com

3110202
4



SOMABAY

16390

somabay.com

info@somabayrealestate.com