



# Arc of Soma

Golf Residential Suites

Glistening on an idyllic peninsula under the Red Sea's year-round sun, Somabay is a paradise getaway famed for its clear sapphire waters, white sandy beaches and intricate tapestry of coral reefs, upping its exclusivity factor by mere topography.

01

Expertly conceived to evoke a laid-back feeling, every aspect of the heavenly development is sympathetic to nature, painting colorful experiences around its lively marina and soul-soothing jetty, so you can take recharge or decelerate.

Home to 5 luxury resort hotels and a signature portfolio of residential properties, Somabay's one-of-a-kind settings with its full complement of premium amenities are the stage for incomparable experiences alongside friends and family.



02

Nestled on 10 million square meters of lush land, life at Somabay is where fantasy-scapes follow you wherever you go and sun drenched activities take infinite elevating forms.

03

# Introducing Arc of Soma Golf Residential Suites.



04

# World-class Exclusivity

Step into a flowing reality where modern modular architecture proudly stands in absolute harmony with natural surroundings to invite panoramic beauty into every home.

Arc of Soma Golf Residential Suites is a contemporary interpretation of exclusive living by the sea where impressive aesthetics seamlessly blend with breathtaking views to re-define the exceptional in every form. Crowning the tip of Somabay's peninsula, your life at Arc of Soma Golf Suites is a signature invitation to connect with uninterrupted nature while marveling in endless blue wherever you turn — thanks to a prime location that places your life at the intersection of tranquility and water-filled memories.



05

## Arc of Soma

# Crowning the Tip of Somabay's Peninsula

Arc of Soma Golf Residential Suites is expertly nestled at the tip of Somabay's peninsula, setting it as a unique sanctuary of calm where clear blue skies meet the open sea. The project's unrivaled location allows residents to forge an exclusive connection with virgin nature while enjoying contemporary living, thanks to modular designs that invite the outdoors inside.



Arc of Soma

06

\*Drone Image





# Arc of Soma Golf Masterplan.

- ARC of Soma Golf total land area : 32, 426 m<sup>2</sup>
- ARC of Soma Golf BUA : 2712 m<sup>2</sup>
- ARC of Soma Golf Foot print GOLF: 957 m<sup>2</sup>
- The Arc distance to the beach: 200 m<sup>2</sup>
- The Arc width from outside: 226 m<sup>2</sup>



# From afar Arc of Soma Golf Suites look like an iconic landmark.

Up close, the contemporary modular design lends each building its aesthetically pleasing appeal to carve new standards in world-class elegance by the sea. Designed with nature and modern-day functionality in mind, Arc of Soma Golf Residential Suites boast sleek glass facades that open onto infinite sea views while enjoying a staggered alchemy to ensure utmost privacy for all residents alike.



09



10



10

Unit  
Type

—  
Grand Suite

Available Only on Ground Floor







15





16





18

Floorplan.

# Grand Suite

**Gross Area**  
151.40 m<sup>2</sup>

**Net Area**  
141.40 m<sup>2</sup>

**Living Area**  
4.55 × 4.65

**Bathroom 1**  
3.20 × 1.70

**Master Bedroom**  
4.55 × 3.60

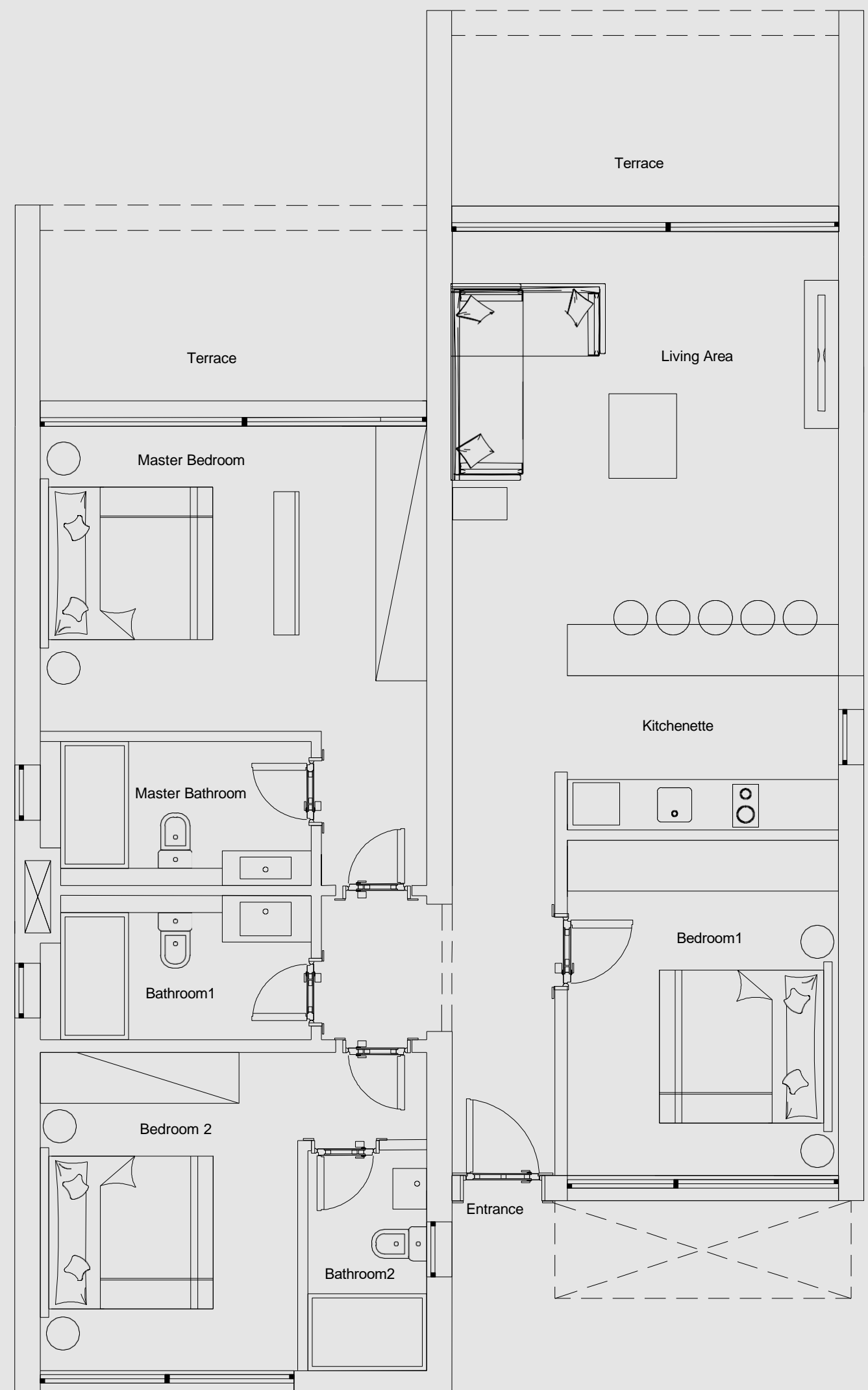
**Bedroom 2**  
3.04 × 3.75

**Master Bathroom**  
3.20 × 1.70

**Bathroom 2**  
1.40 × 2.60

**Kitchenette**  
3.20 × 2.40

**Bedroom 1**  
3.20 × 3.95



# 19

Schematic Design information only, and

DISCL AIMER 1. Drawings are not to scale. 2. The architectural details, dimensions and area in this plan are based on

final As-Built conditions may vary. 3. All units are sold as unfurnished apartments, without furniture and furnishings, without white goods provisions, etc. 4. All images used are for illustrative purposes only and do not represent the actual size, features, specifications, fittings, and furnishings. 5. Somabay reserves the right to make revisions/alterations, at its absolute discretion, and without liability.

Unit Type

—

Single Suite

Available on Ground or First Floor











24

Floorplan.

# Single Suite

**Gross Area**

73.00 m<sup>2</sup>

**Living Area**

4.55 × 5.35

**Master Bedroom**

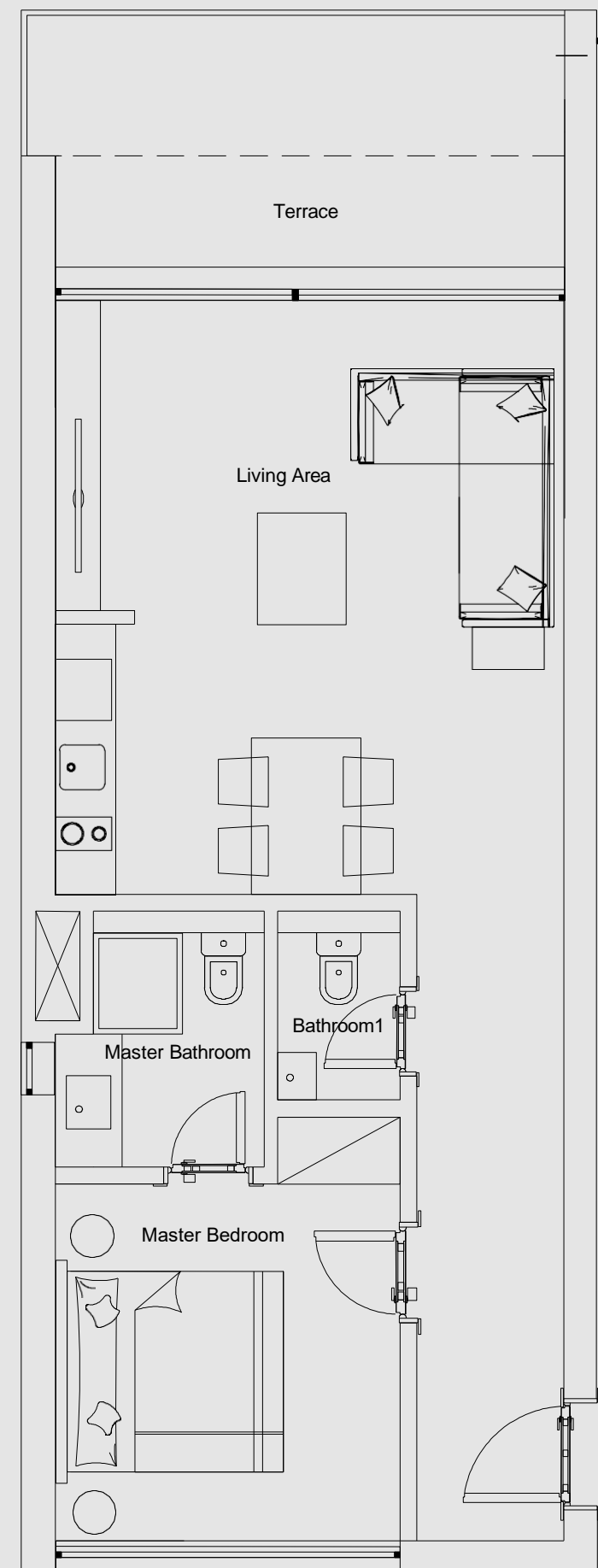
3.10 × 3.20

**Master Bathroom**

1.85 × 2.30

**Bathroom**

1.10 × 1.70



# 25

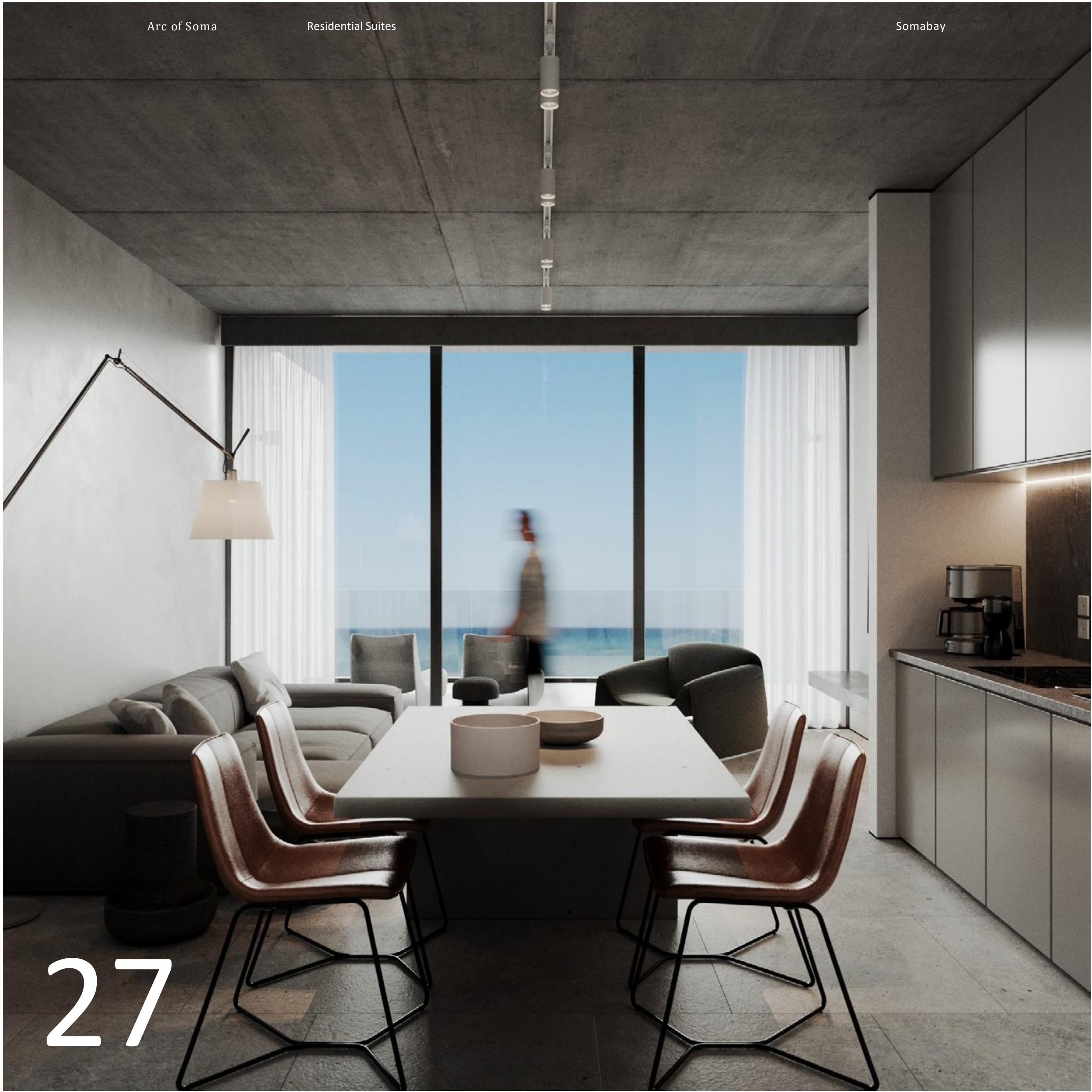
DISCLAIMER 1. Drawings are not to scale. 2. The architectural details, dimensions and area in this plan are based on Schematic Design information only, and final As-Built conditions may vary. 3. All units are sold as unfurnished apartments, without furniture and furnishings, without white goods provisions, etc. 4. All images used are for illustrative purposes only and do not represent the actual size, features, specifications, fittings, and furnishings. 5. Somabay reserves the right to make revisions/alterations, at its absolute discretion, and without liability.

Unit Type

—

# Duplex Penthouse

Available on First/Second Floor







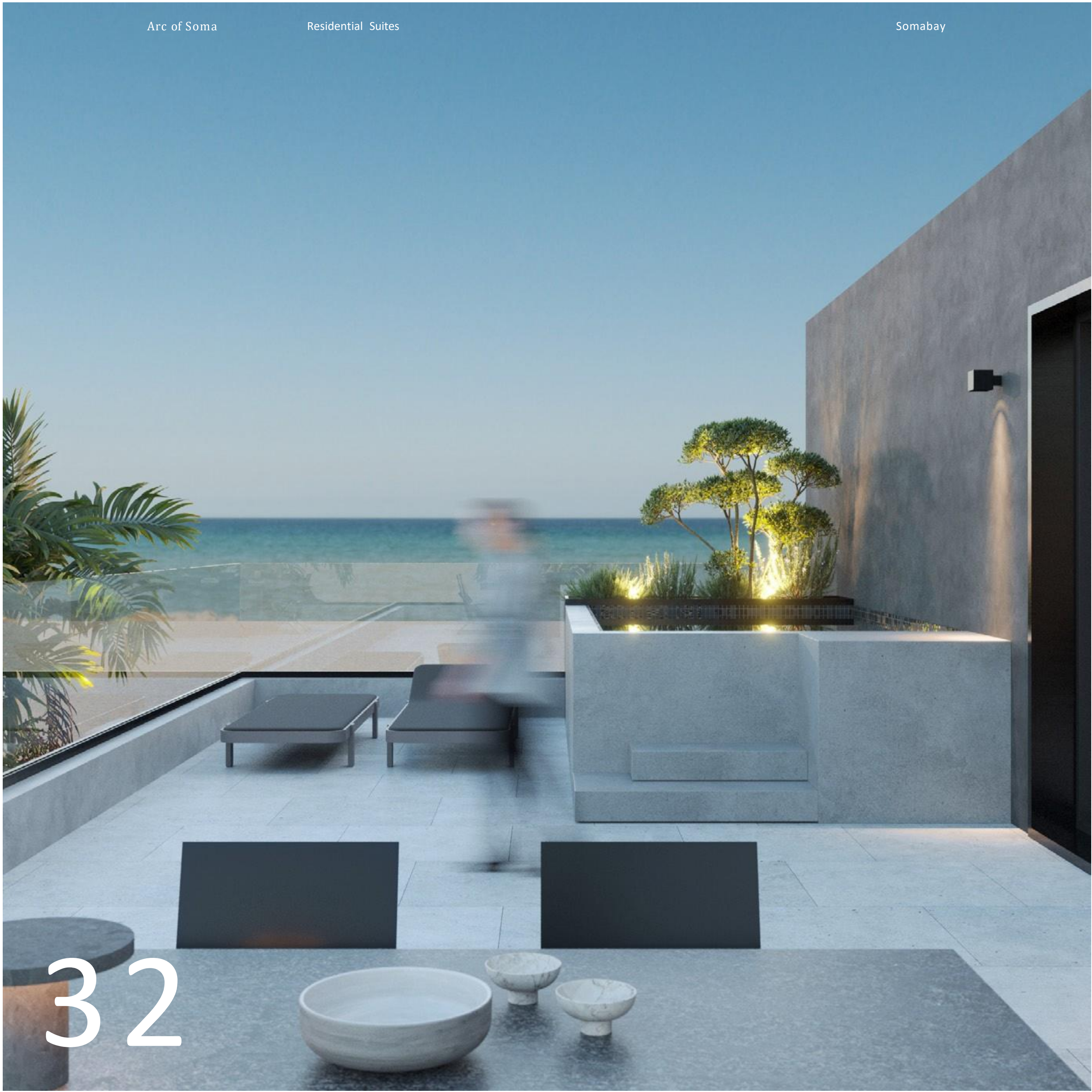


30



31





32



Floorplan.

# Duplex Penthouse

First Floor

**Gross Area**

139 m<sup>2</sup>

**Roof Terrace**

62.00 m<sup>2</sup>

**Living Area**

4.55 × 2.60

**Bedroom 1**

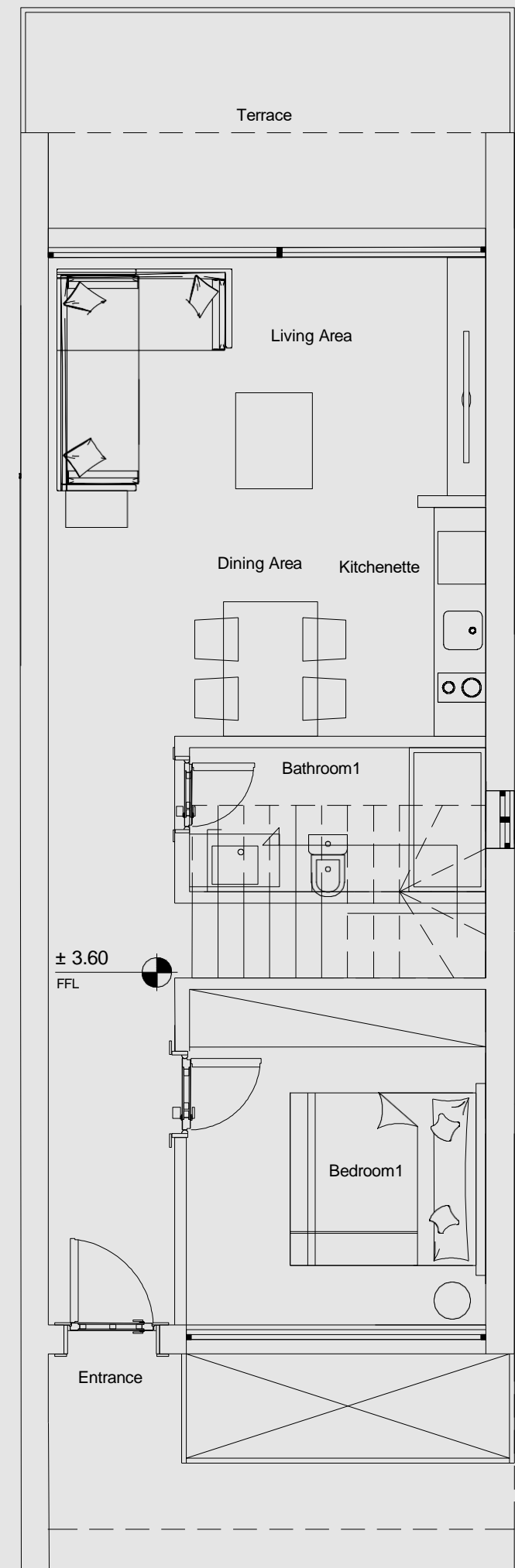
3.10 × 3.50

**Dining Area**

4.55 × 2.40

**Bathroom**

3.10 × 1.50



# 34

DISCLAIMER 1. Drawings are not to scale. 2. The architectural details, dimensions and area in this plan are based on Schematic Design information only, and final As-Built conditions may vary. 3. All units are sold as unfurnished apartments, without furniture and furnishings, without white goods provisions, etc. 4. All images used are for illustrative purposes only and do not represent the actual size, features, specifications, fittings, and furnishings. 5. Somabay reserves the right to make revisions/alterations, at its absolute discretion, and without liability.

## Floorplan

# Duplex Penthouse

Second Floor + Roof

## Gross Area

139 m<sup>2</sup>

## Roof Terrace

62.00 m<sup>2</sup>

## Master Bedroom

4.55x3.60

## Bedroom 2

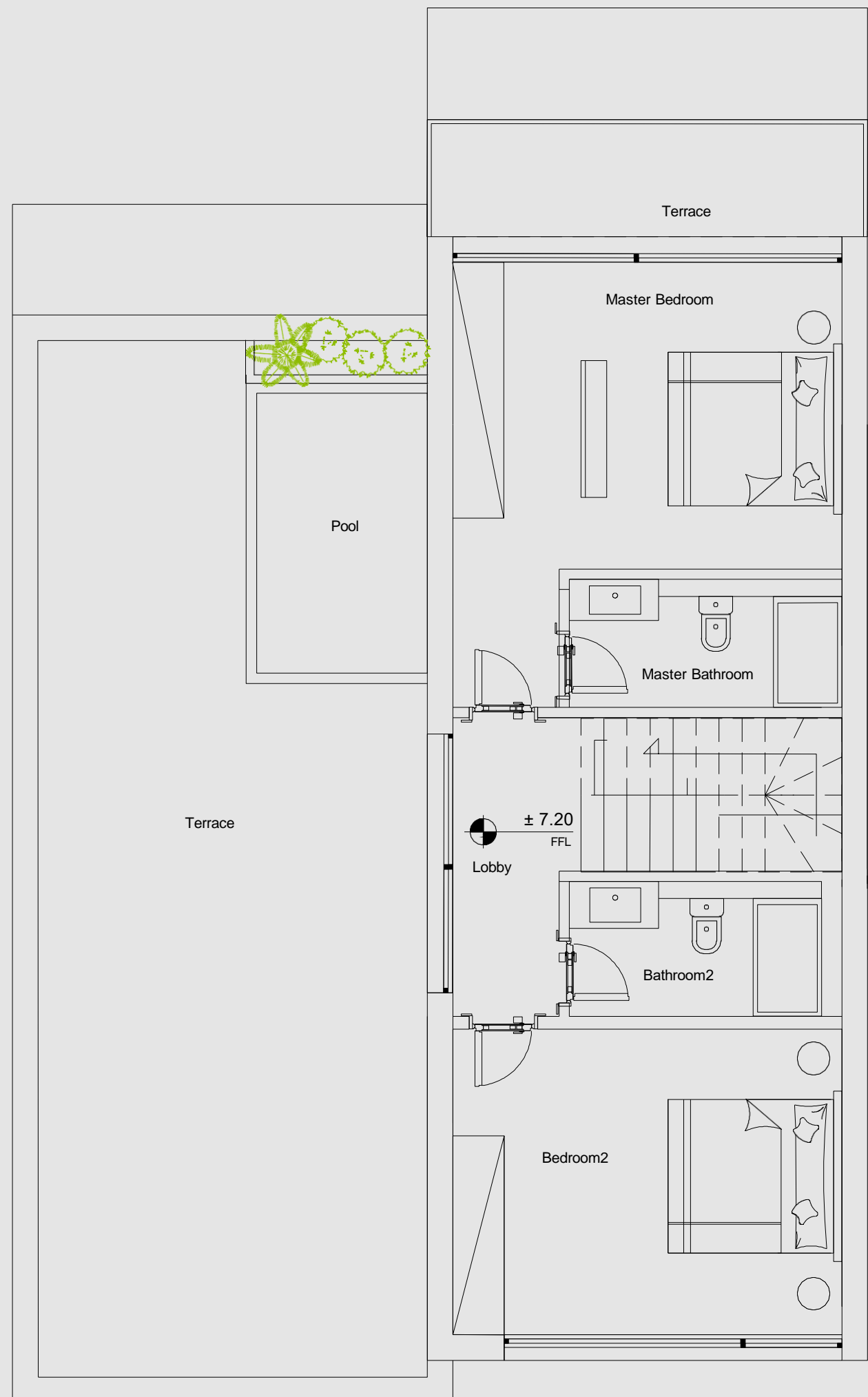
4.55X3.60

## Master Bathroom

3.20X1.50

## Bathroom 2

3.20X1.60



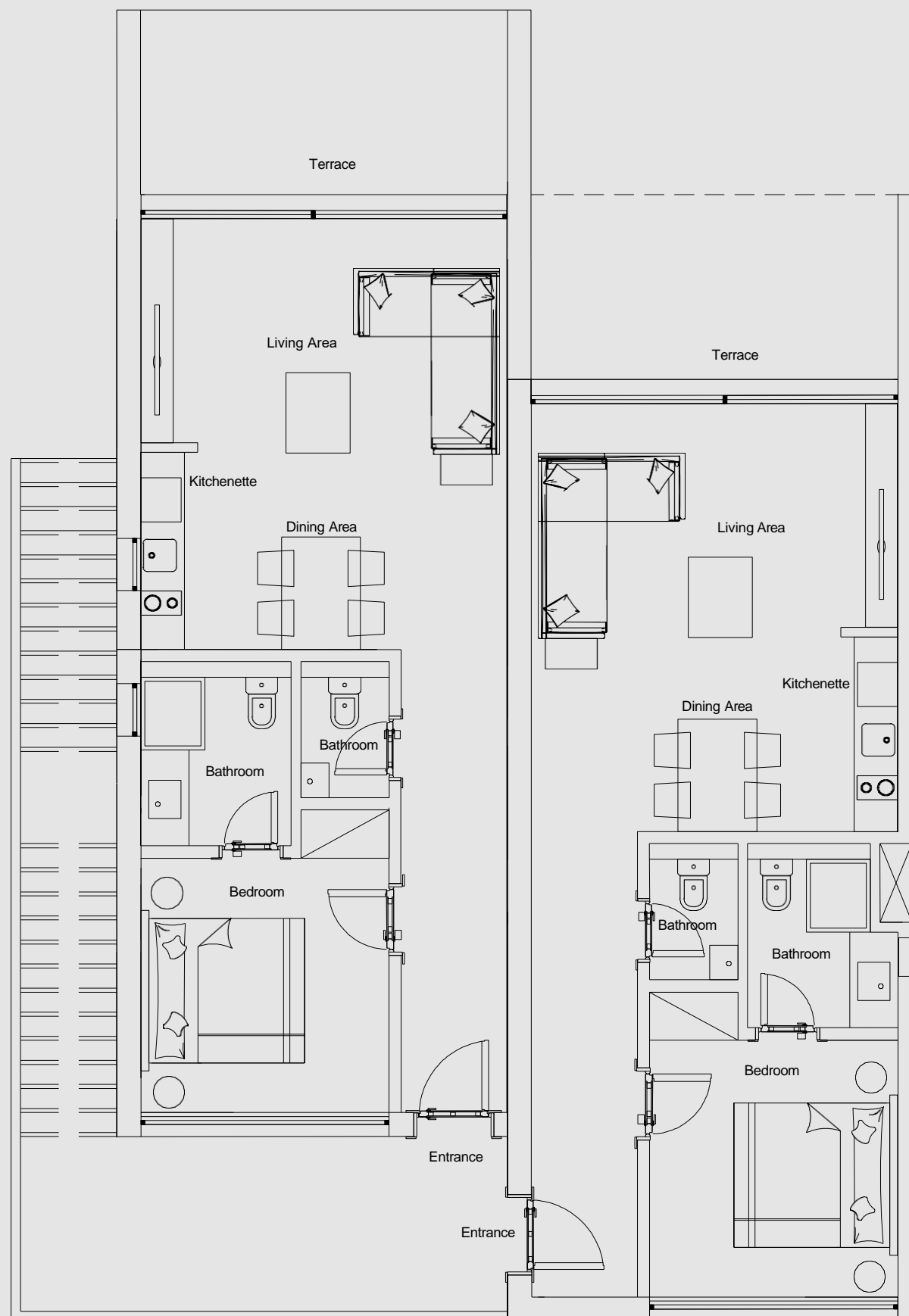
# 35

DISCLAIMER 1. Drawings are not to scale. 2. The architectural details, dimensions and area in this plan are based on Schematic Design information only, and final As-Built conditions may vary. 3. All units are sold as unfurnished apartments, without furniture and furnishings, without white goods provisions, etc. 4. All images used are for illustrative purposes only and do not represent the actual size, features, specifications, fittings, and furnishings. 5. Somabay reserves the right to make revisions/alterations, at its absolute discretion, and without liability.

# Building Type Five.

Building Type 5

## Ground Floor

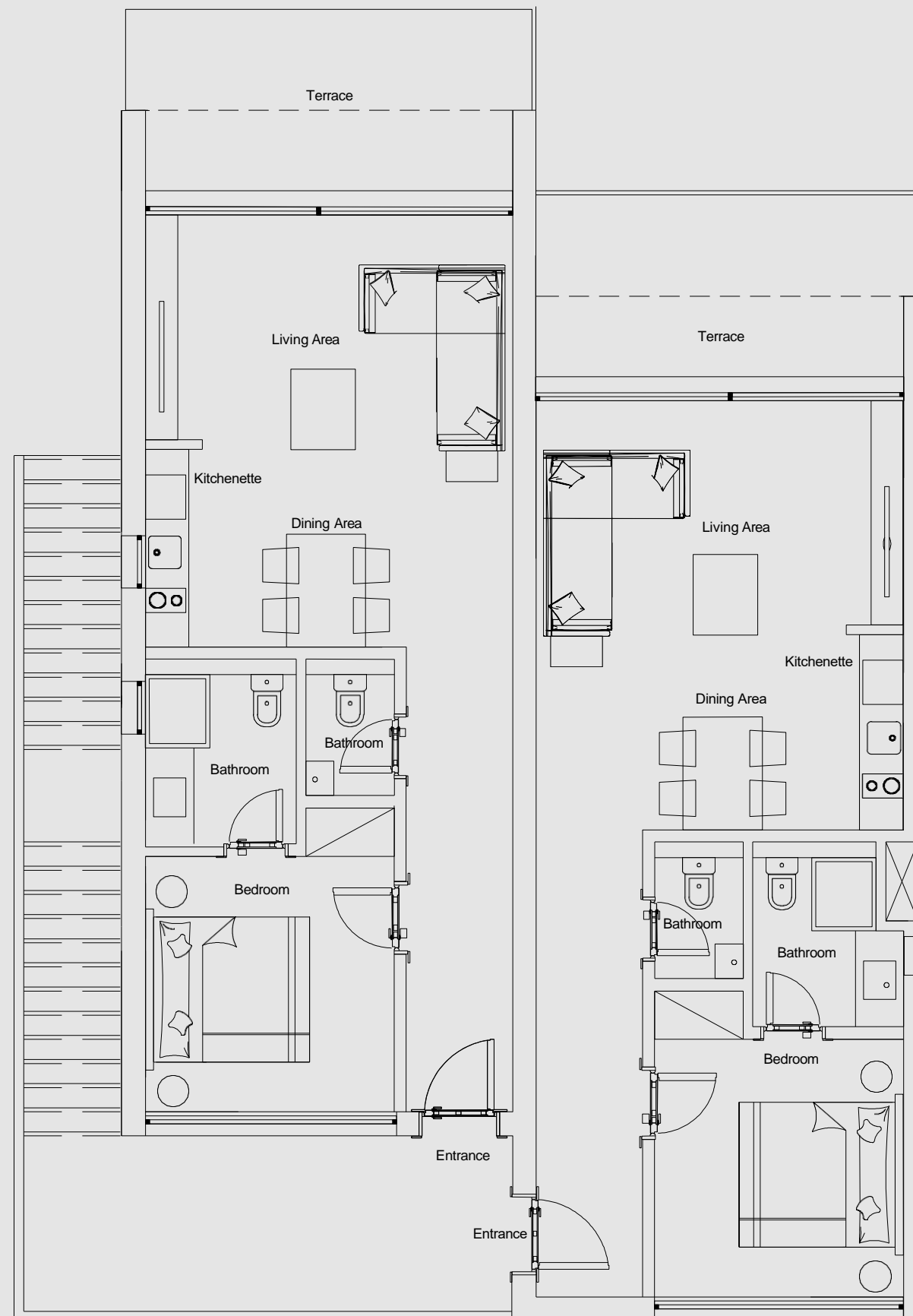


37

DISCLAIMER 1. Drawings are not to scale. 2. The architectural details, dimensions and area in this plan are based on Scale and Design information only. 3. All units are sold as unfurnished apartments, without furniture and furnishings, without white goods provisions, etc. 4. All images used are for illustrative purposes only and do not represent the actual size, features, specifications, fittings, and furnishings. 5. Somabay reserves the right to make revisions/alterations, at its absolute discretion, and without liability.

Building Type 5

# First Floor



# 38

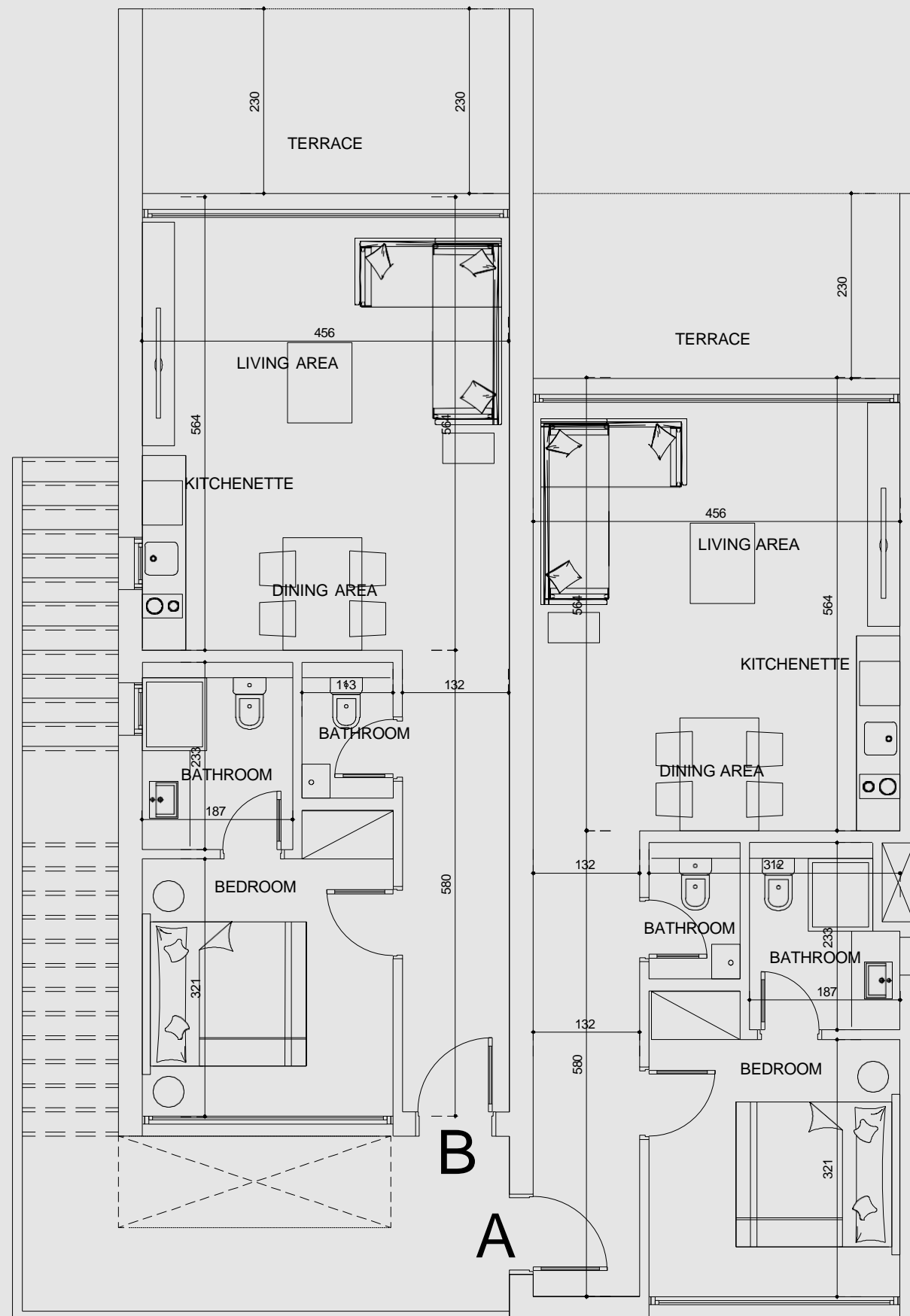
DISCLAIMER 1. Drawings are not to scale. 2. The architectural details, dimensions and area in this plan are based on Schematic Design information only, and final As-Built conditions may vary. 3. All units are sold as unfurnished apartments, without furniture and furnishings, without white goods provisions, etc. 4. All images used are for illustrative purposes only and do not represent the actual size, features, specifications, fittings, and furnishings. 5. Somabay reserves the right to make revisions/alterations, at its absolute discretion, and without liability.

# Building Type Six.



Building Type 6

## Ground Floor

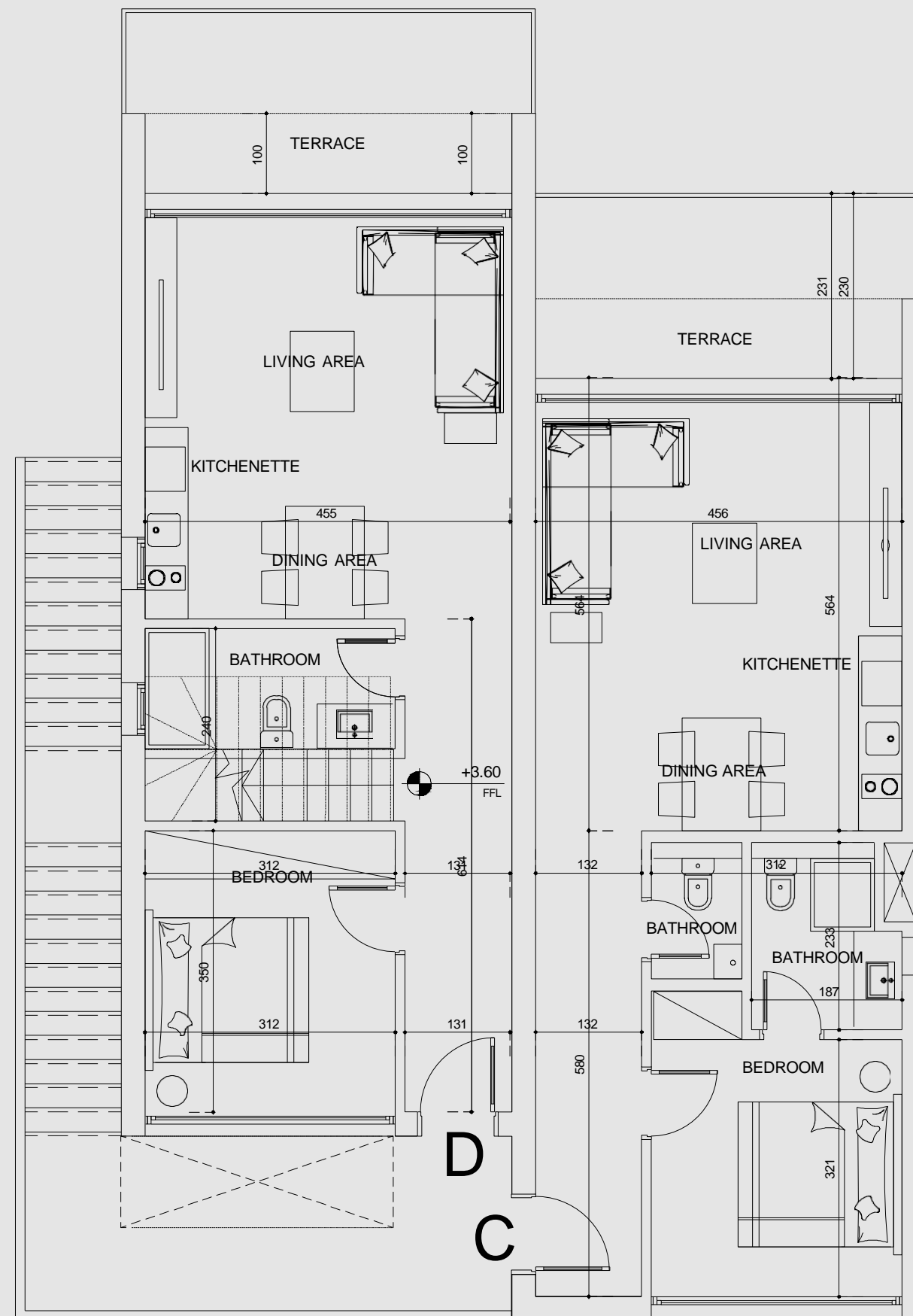


40

DISCLAIMER 1. Drawings are not to scale. 2. The architectural details, dimensions and area in this plan are based on Schematic Design information only, and final As-Built conditions may vary. 3. All units are sold as unfurnished apartments, without furniture and furnishings, without white goods provisions, etc. 4. All images used are for illustrative purposes only and do not represent the actual size, features, specifications, fittings, and furnishings. 5. Somabay reserves the right to make revisions/alterations, at its absolute discretion, and without liability.

Building Type 6

## First Floor

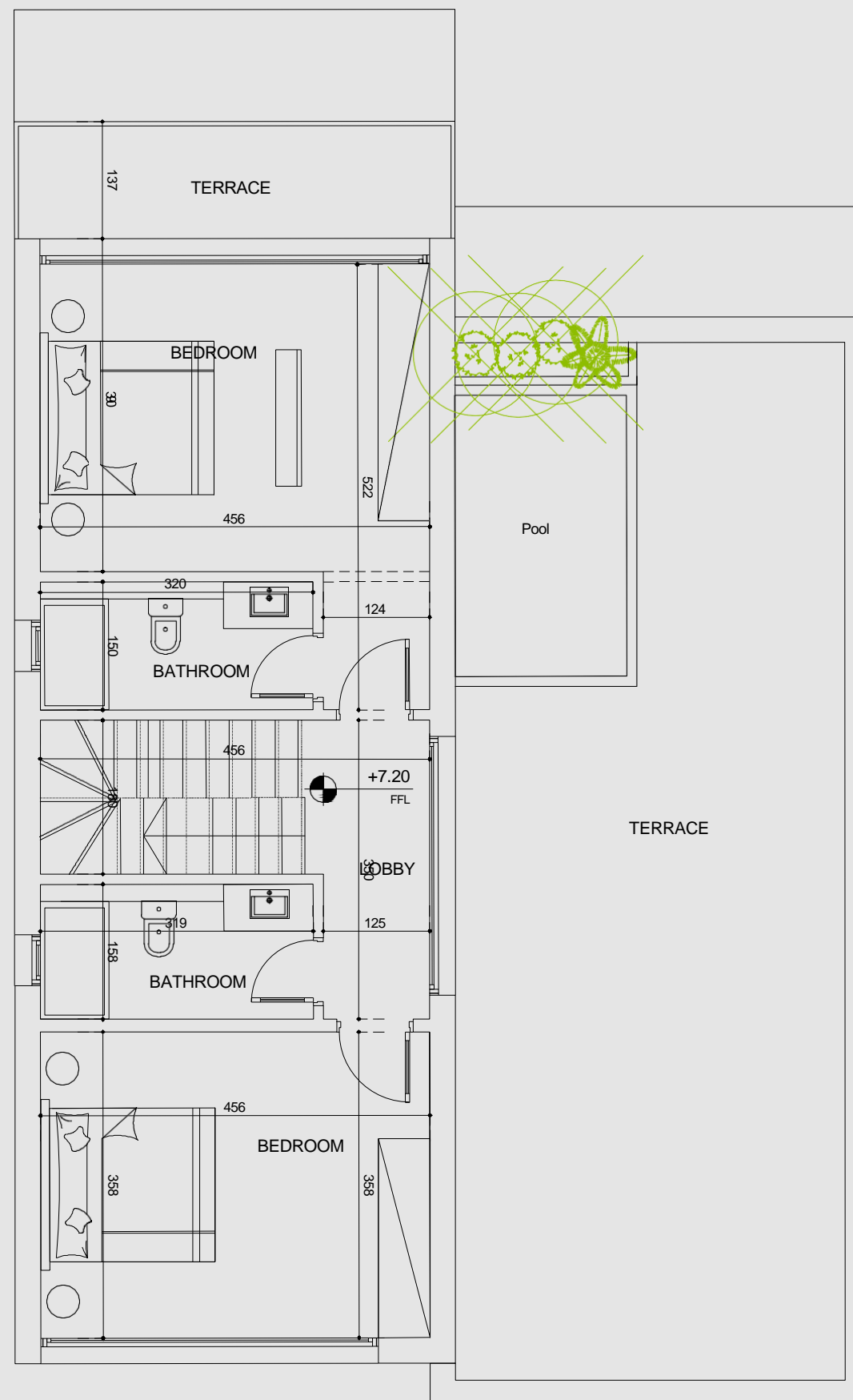


41

DISCLAIMER 1. Drawings are not to scale. 2. The architectural details, dimensions and area in this plan are based on Site As Built Design information only. All units are sold as unfurnished apartments, without furniture and furnishings, without white goods provisions, etc. 4. All images used are for illustrative purposes only and do not represent the actual size, features, specifications, fittings, and furnishings. 5. Somabay reserves the right to make revisions/alterations, at its absolute discretion, and without liability.

Building Type 6

# Second Floor



# 42

DISCLAIMER 1. Drawings are not to scale. 2. The architectural details, dimensions and area in this plan are based on Schematic Design information only, and final As-Built conditions may vary. 3. All units are sold as unfurnished apartments, without furniture and furnishings, without white goods provisions, etc. 4. All images used are for illustrative purposes only and do not represent the actual size, features, specifications, fittings, and furnishings. 5. Somabay reserves the right to make revisions/alterations, at its absolute discretion, and without liability.

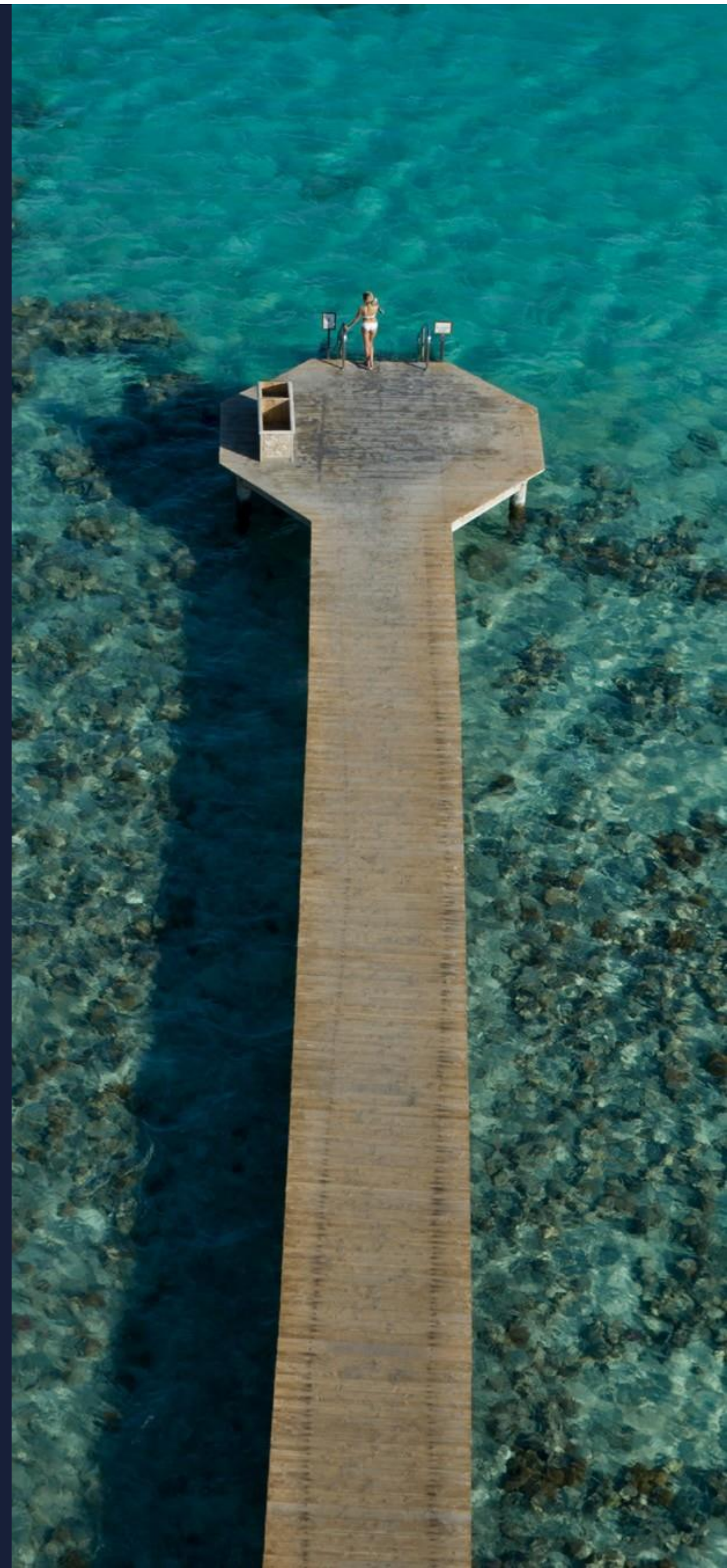
# Somabay Experience

# An Exciting Itinerary for the Whole Family.

Start your day by teeing off at Somabay Championship Golf Course then unwind at the award winning Cascades Spa and Thalasso and allow the healing powers of the Red Sea to restore balance to your body and soul.

For the more adventurous, ORCA Dive Centre invites you to uncover the untapped wonders of Egypt's marine life at the site's colorful House Reef. Kite surfing lovers can spend a serene afternoon gliding across flat waters at 7Bft —one of the top 3 kite surfing spots in the world- followed by a world-class dining experience at any of the destination's signature restaurants.

Blessed with dry desert winds, low humidity and a front-row seat on immaculate sea views, Somabay dictates an exciting itinerary for the whole family, transforming your everyday reality into a waking dream.



# The Somabay Championship Golf Course.

Opening onto spectacular 360 degree views of lush golf greens, azure Red Sea hues and earthy desert tones, The Somabay 18 hole, par 72 Championship Golf Course is designed by legendary golfer Gary Player to ignite guests' love for the sport. Ranked as one of the leading golf courses in Africa, The Somabay Championship Golf Course boasts a state-of-the-art academy, guaranteeing non-stop excitement for amateurs and professionals alike.



45

# Somabay Hotels

Somabay opens your eyes on a variety of hospitality options to suit every need. From designed hotels to budget accommodation with impeccable service, the destination guarantees a memorable stay, as well as signature treatment all year.

---

Kempinski Somabay

---

Sheraton Somabay

---

The Cascades Golf Resort,  
Spa & Thalasso

---

Robinson Club

---

The Breakers



46

## 7 Bft The Kite House.

Spend your day gliding across flat idyllic waters at one of the top 3 Kite Surfing spots in the world, offering 365 days of incomparable wind and natural beauty to inspire.

Opening onto a tranquil bay, Somabay embraces pristine beaches and perfect off-shore and side shore winds ranging from 4 to 8 Bft. 7Bft's professional team of instructors are committed to making your kite experience safe, fun and complete by offering exclusive teaching and testing weeks with the latest equipment.

The Kite house is an ideal sea-side escape, offering everything you need from fresh food and refreshing cocktails, as you take in heavenly bay views from the restaurant or bar's open terrace.

An aerial photograph of a vast, turquoise bay. In the center, a kitesurfer is gliding across the water, leaving a white wake. A large, curved kite is visible in the sky above the water. In the distance, a coastline with buildings and mountains is visible under a clear blue sky. A small sailboat is also visible on the right side of the bay.

47



# ORCA Dive Center.

Escape for hours at sea with ORCA Dive Center and allow Somabay's captivating dive sites and renowned colorful House Reef to leave you in awe. Ideal for beginners and advanced divers alike, our purpose-built diving center is one of the largest and most well-equipped in the Red Sea, led by an international team of instructors who ensure you explore a treasure trove of wonders with safety and ease.

Easily accessible via a 420 meter long jetty that stretches over a kilometer, the House Reef is serviced by electric cards, available to transport equipment and divers for an ultimate fun and hassle-free experience like no other. Boasting a large turquoise-blue lagoon with sheltered waters ideal for training, ORCA dive center is fully equipped with top-of-the-line gear, in addition to snorkeling equipment, in-house photo and video facilities to meet all the needs of the avid underwater photographer and explorer.

A full-page underwater photograph showing a diver in the center, illuminated by a bright light. The diver is surrounded by a vast coral reef structure on the left and right. The water is a deep blue, and many small fish are visible swimming around. The overall scene is serene and captures the beauty of an underwater ecosystem.

48

# The Cascades Spa & Thalasso.

Luxury award winner 'The Cascades Spa & Thalasso' invites you to uncover the most exquisite spa experience in the Middle East. Rolling out on 7,500 m<sup>2</sup>, the spa is an oasis of calm, crowning a front-row seat on the Red Sea's pristine coastline while boasting 65 treatment rooms spanning traditional massages, beauty treatments, hydrotherapy and aesthetic procedures. Take a plunge in our 830 m<sup>2</sup> Thalasso-Tonic hydrotherapy pool and allow the wonders of the Red Sea to restore balance to your mind, body and soul.



# 49

# Somabay Marina

Somabay's comprehensive Marina is a peaceful haven for immaculate sea views and a unique location for nautical fans wishing to dock their boats at a competitive price. Boasting world-class services and conditions for mooring, the Marina offers a wide array of quality services and facilities directly available at quayside, so you can enjoy sailing smoothly through life.



50

**stayr**  
BayLife home rentals

## Leave your house in good hands

Our hospitality professionals with international experience in luxury branded properties will be taking care of your home and will be available around the clock to make sure everything goes according to plan

## Invest in a relationship of trust

We invest all our efforts in marketing your house while determining the best rental price based on meticulous market research. We personalize each of our bookings according to your needs, guaranteeing a hassle-free home rental experience where you don't need to show up at every tenant's back and because we'll do it for you

## Enter into a signature collection

Stayr invites you to enter its signature collection where the exceptional is found everywhere. Each of our listed homes boasts a unique personality of its own, as well as a one-of-a-kind view to cater to every holiday mood





**SOMABAY  
PROPERTY  
RESALE**

## Property Resale

Our Property Resale Division is a dedicated arm of leading professionals who enable you to make the most out of our unit's value by selling it at the best market price, guaranteeing the highest return on investment.



SOMABAY

---

4A Hassan Sabry St. Zamalek, Cairo,  
Egypt.  
Capital Business Park, Building B4, 26<sup>th</sup> of July Corridor,  
1<sup>st</sup> floor, Sheikh Zayed, Giza, Egypt.

---

Postal Code. 41516, Somabay office

16390

---

somabay.com

---

discoversomabay.com

DISCOVER  
SOMABAY